

WAAS CH <b>86639</b> W35A	APP CRS <b>358°</b>	Rwy Idg TDZE Apt Elev	<b>4007</b> <b>572</b> <b>572</b>
---------------------------------	------------------------	-----------------------------	---

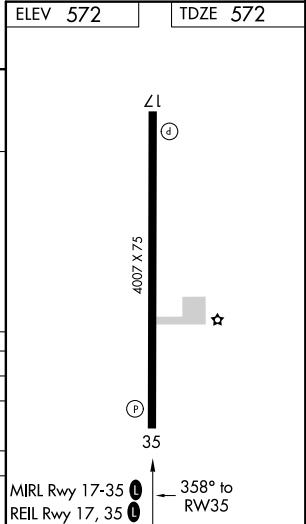
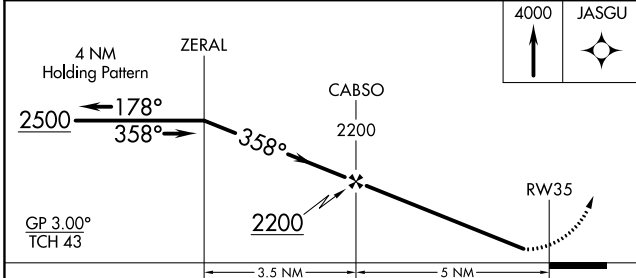
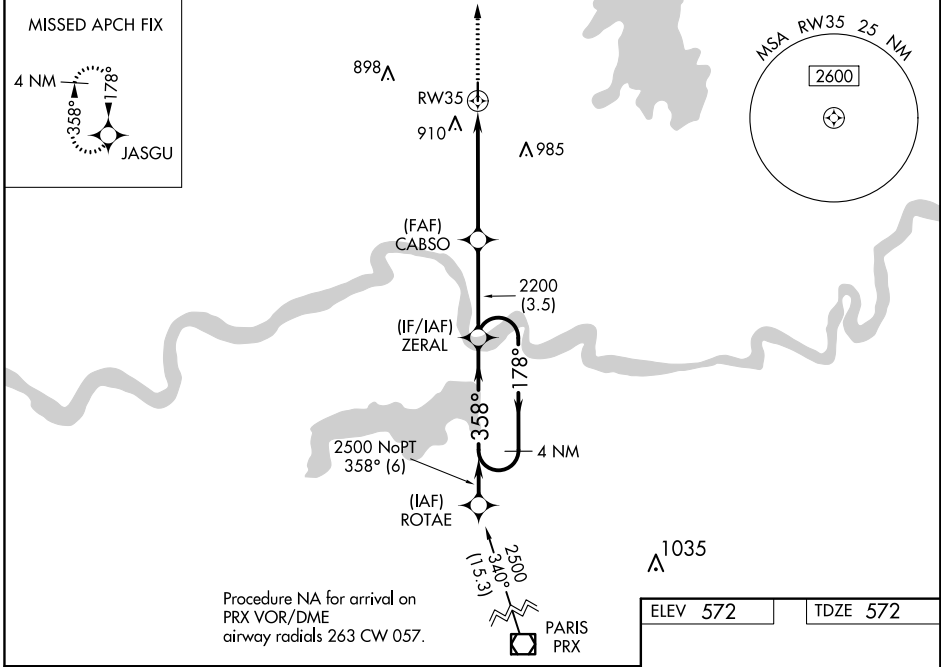
# RNAV (GPS) RWY 35

STAN STAMPER MUNI (HHW)

▼ For uncompensated Baro-VNAV systems, LNAV/VNAV NA below -16°C (4°F) or above 54°C (130°F). Rwy 35 helicopter ▲ visibility reduction below 1 SM NA. DME/DME RNP-0.3 NA. Straight-in Rwy 35 and Circling Rwy 35 NA at night.

MISSED APPROACH: Climb to 4000 direct JASGU and hold, continue climb-in-hold to 4000.

AWOS-3 <b>119.025</b>	FORT WORTH CENTER <b>127.6 307.2</b>	UNICOM <b>122.8 (CTAF) 0</b>
--------------------------	---	---------------------------------



CATEGORY	A	B	C	D
LPV DA	822-1		250 (300-1)	
LNAV/VNAV DA	1071-1 $\frac{3}{8}$		499 (500-1 $\frac{3}{8}$ )	
LNAV MDA	1020-1	448 (500-1)	1020-1 $\frac{3}{8}$	448 (500-1 $\frac{3}{8}$ )
<span style="color: red;">■</span> CIRCLING	1220-1	648 (700-1)	1340-2 $\frac{1}{4}$ 768 (800-2 $\frac{1}{4}$ )	1340-2 $\frac{1}{2}$ 768 (800-2 $\frac{1}{2}$ )

SC-1, 27 JAN 2022 to 24 FEB 2022

SC-1, 27 JAN 2022 to 24 FEB 2022