

VOR/DME BAE 116.4 Chan 111	APP CRS 247°	Rwy Idg TDZE Apt Elev	N/A N/A 800
--	------------------------	-----------------------------	--------------------------

VOR-A

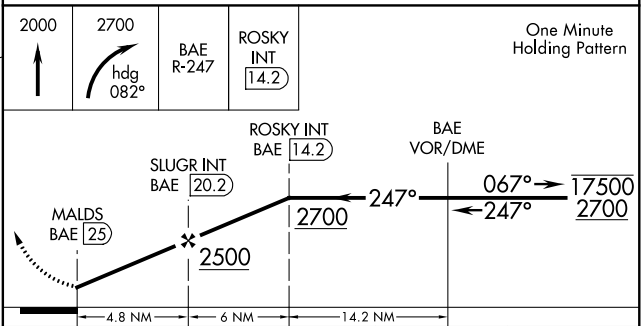
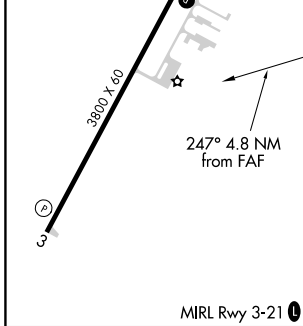
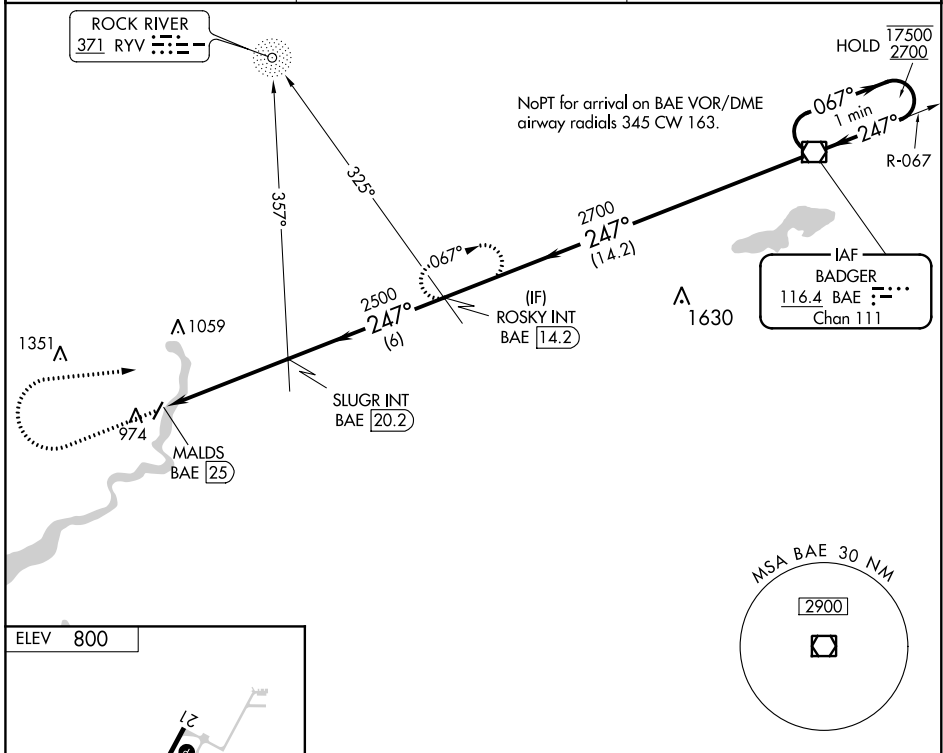
FORT ATKINSON MUNI (61C)

ADF or DME required.

⚠ Circling to Rwy 3 NA at night. Rwy 3 helicopter visibility reduction below 1 SM NA. Use Watertown altimeter setting.

MISSED APPROACH: Climb to 2000 then climbing right turn to 2700 on heading 082° and on BAE VOR/DME R-247 to ROSKY INT/BAE 14.2 DME and hold.

RYV AWOS-3 119.975	MADISON APP CON ★ 120.1 350.3	CTAF 122.9
------------------------------	---	----------------------



FAF to MAP 4.8 NM					
Knots	60	90	120	150	180
Min:Sec	4:48	3:12	2:24	1:55	1:36
CATEGORY	A		B		D
C CIRCLING	1440-1		640 (700-1)		1460-1¾ 660 (700-1¾)

EC-3, 27 JAN 2022 to 24 FEB 2022

EC-3, 27 JAN 2022 to 24 FEB 2022