

WAAS CH <b>48929</b> <b>W15A</b>	APP CRS <b>148°</b>	Rwy ldg TDZE Apt Elev	<b>2997</b> <b>345</b> <b>345</b>
--	------------------------	-----------------------------	---

# RNAV (GPS) RWY 15

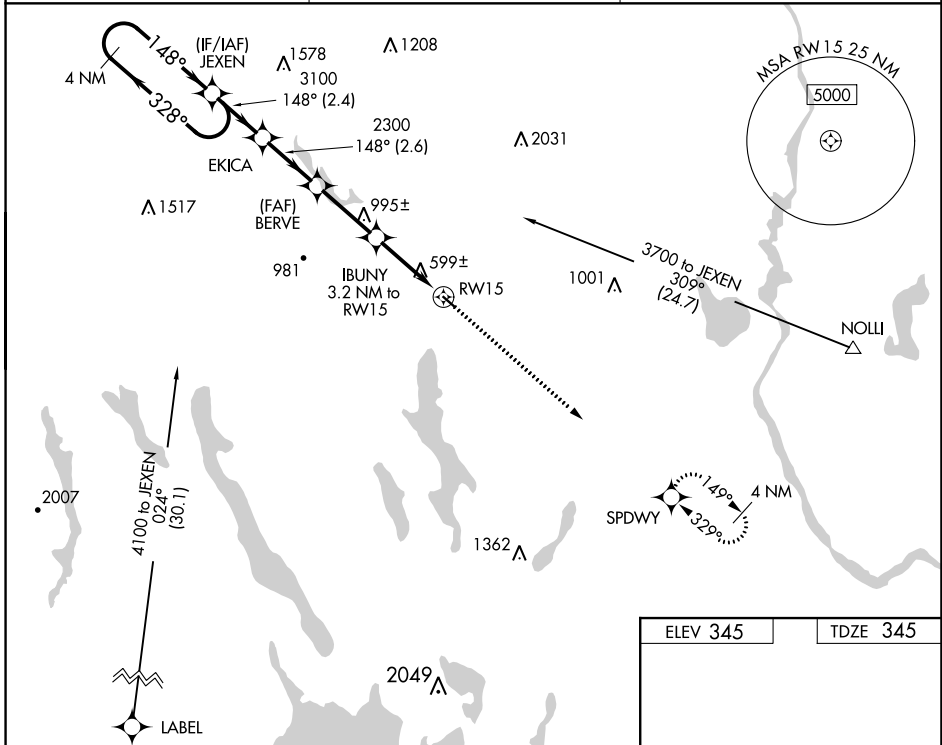
OXFORD COUNTY RGNL (81B)

**▽** DME/DME RNP-0.3 NA. Procedure NA at night. Use Auburn/Lewiston altimeter setting; when not received, use Fryeburg altimeter setting and increase all MDA 40 feet, increase Circling Cat B visibility to 1½. Helicopter visibility reduction below 1 SM NA.

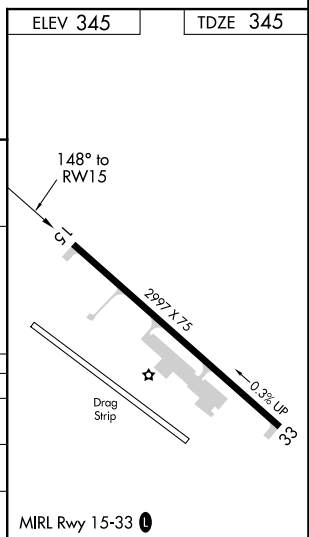
**▲** NA

MISSED APPROACH: Climb to 3600 direct SPDWY and hold, continue climb-in-hold to 3600.

LEW AWOS-3 <b>118.025</b>	PORTLAND APP CON ★ <b>125.5 353.9</b>	UNICOM <b>122.8</b> (CTAF) <b>0</b>
------------------------------	--	--



4 NM Holding Pattern		Visual Segment - Obstacles.		3600	SPDWY
3700 ← 328° → 148° → 148°		JEXEN	EKICA	BERVE	IBUNY 3.2 NM to RW15
		3100	2300	1400	RW15
		← 2.4 NM →	← 2.6 NM →	← 2.8 NM →	← 3.2 NM →
CATEGORY	A	B	C	D	
LP MDA	900-1	555 (600-1)		NA	
LNAV MDA	1140-1 795 (800-1)	1140-1¼ 795 (800-1¼)		NA	
CIRCLING	1220-1¼ 875 (900-1¼)	1260-1¼ 915 (1000-1¼)		NA	



NE-1, 27 JAN 2022 to 24 FEB 2022

NE-1, 27 JAN 2022 to 24 FEB 2022