

WAAS CH 86329 W33A	APP CRS 329°	Rwy Idg TDZE 345 Apt Elev 345	2997
--	------------------------	---	-------------

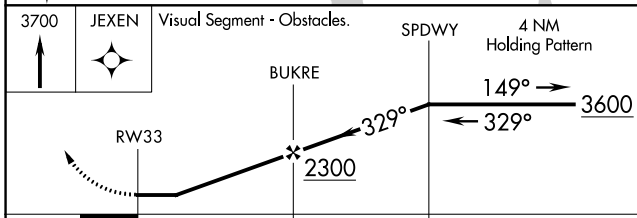
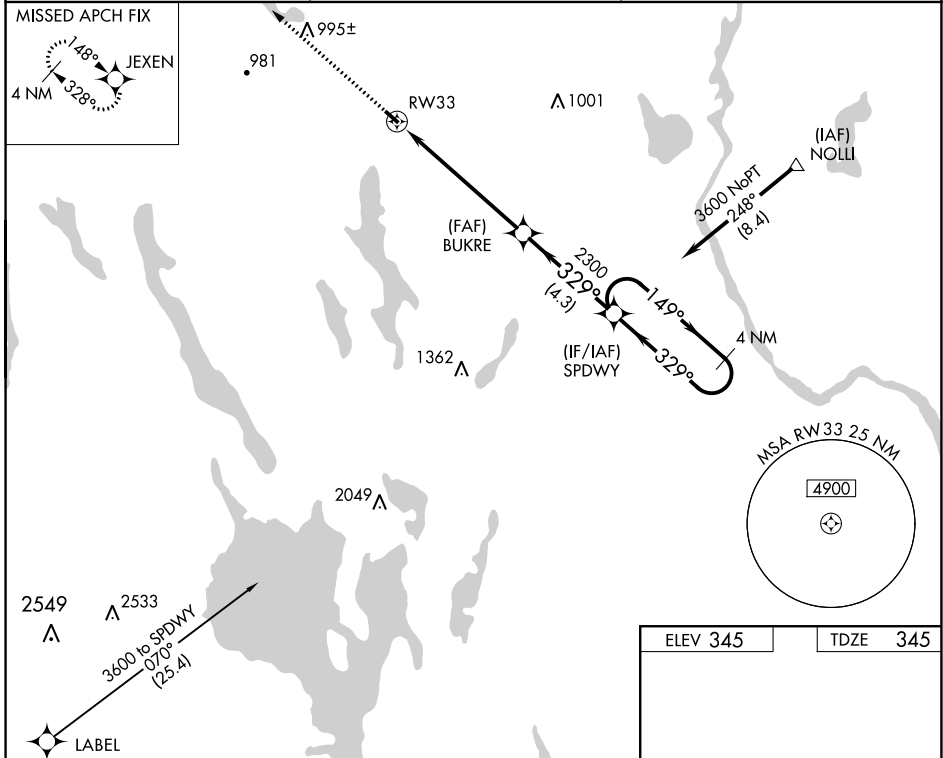
RNAV (GPS) RWY 33

OXFORD COUNTY RGNL (81B)

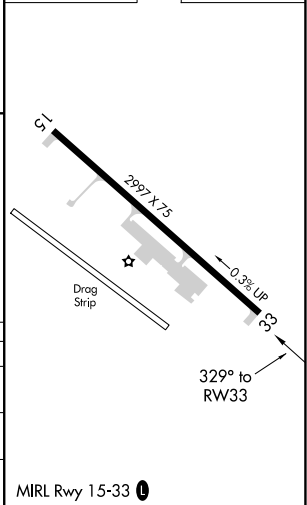
▽ DME/DME RNP-0.3 NA. Procedure NA at night. Use Auburn/Lewiston altimeter setting; when not received, use Fryeburg altimeter setting and increase all MDA 40 feet, increase Circling Cat B visibility to 1 1/2. Helicopter visibility reduction below 1 SM NA.

△ NA MISSED APPROACH: Climb to 3700 direct JEXEN and hold, continue climb-in-hold to 3700.

LEW AWOS-3 118.025	PORTLAND APP CON ★ 125.5 353.9	UNICOM 122.8 (CTAF) 0
------------------------------	--	---------------------------------



ELEV 345	TDZE 345
----------	----------



CATEGORY	A	B	C	D
LP MDA	1120-1 775 (800-1)	1120-1 1/4 775 (800-1 1/4)		NA
LNAV MDA	1140-1 795 (800-1)	1140-1 1/4 795 (800-1 1/4)		NA
CIRCLING	1220-1 1/4 875 (900-1 1/4)	1260-1 1/4 915 (1000-1 1/4)		NA

NE-1, 27 JAN 2022 to 24 FEB 2022

NE-1, 27 JAN 2022 to 24 FEB 2022