

# RNAV (GPS) RWY 32

SAN MARTIN (E16)

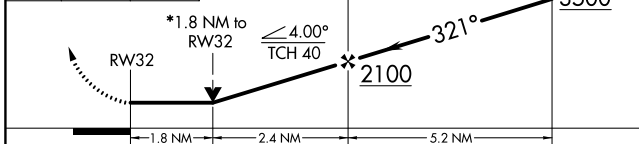
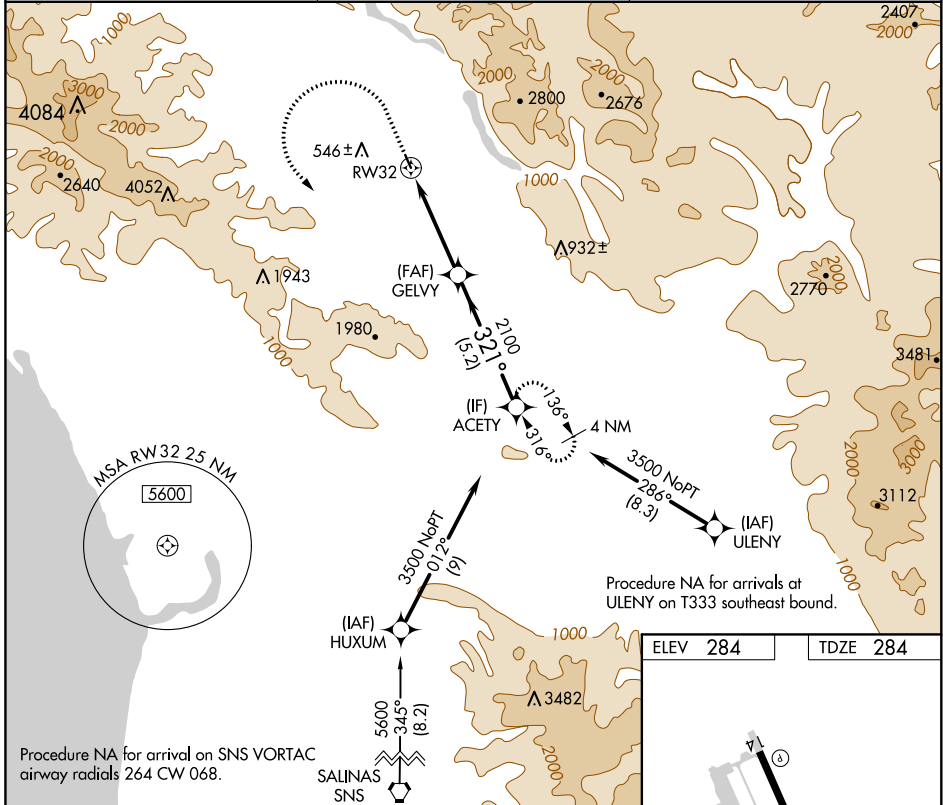
APP CRS <b>321°</b>	Rwy Idg <b>3095</b>
	TDZE <b>284</b>
	Apt Elev <b>284</b>

RNP APCH.

**⚠** Circling NA southwest of Rwy 14-32. Rwy 32 helicopter visibility reduction below 3/4 SM NA.

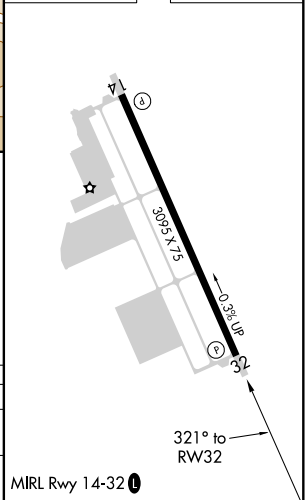
MISSED APPROACH: Climb to 1700 then climbing left turn to 3500 direct ACETY and hold.

AWOS-3P <b>118.35</b>	NORCAL APP CON <b>124.525 348.675</b>	UNICOM <b>122.7 (CTAF) 0</b>
--------------------------	--	---------------------------------



CATEGORY	A	B	C	D
LNVA MDA	1060-1 776 (800-1)	1060-1 1/4 776 (800-1 1/4)	NA	
<b>C</b> CIRCLING	1060-1 776 (800-1)	1160-1 1/4 876 (900-1 1/4)	NA	

ELEV 284	TDZE 284
----------	----------



SW-2, 27 JAN 2022 to 24 FEB 2022

SW-2, 27 JAN 2022 to 24 FEB 2022