

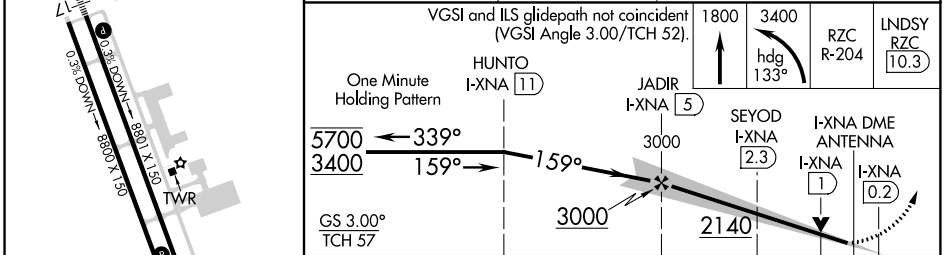
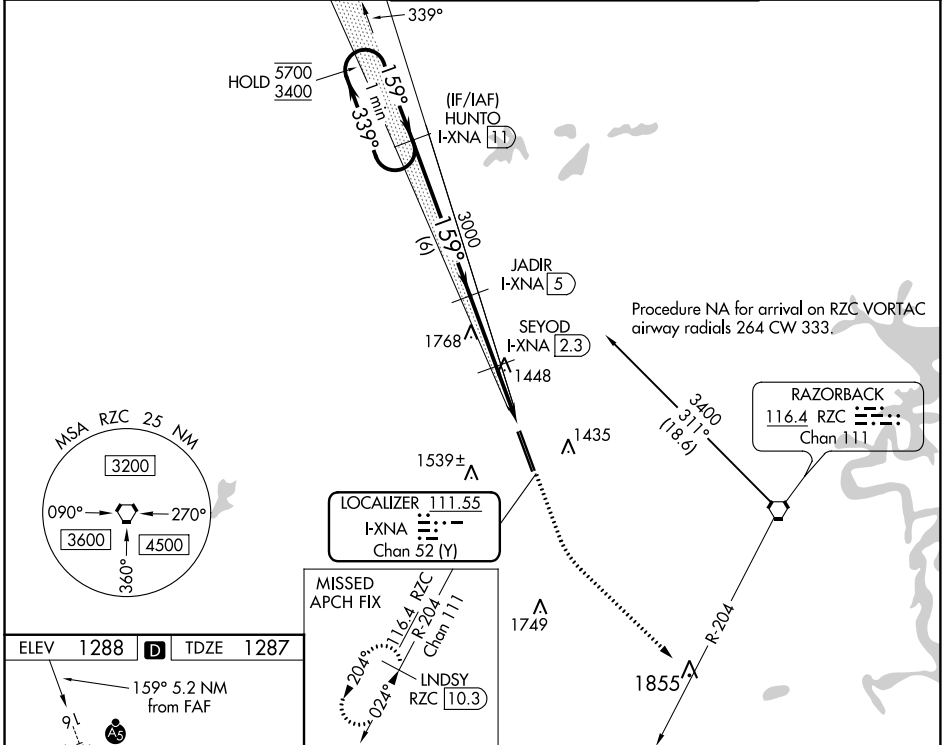
LOC/DME I-XNA 111.55 Chan 52 (Y)	APP CRS 159°	Rwy Idg TDZE 8800 1287	Apt Elev 1288
---	------------------------	--	-------------------------

ILS or LOC RWY 16

NORTHWEST ARKANSAS NTL (X.N.A)

DME required. For inop ALS, increase S-ILS 16 Cat E visibility to RVR 4000, and S-LOC 16 Cat C/D/E to RVR 6000. *RVR 1800 authorized with use of FD or AP or HUD to DA.	MALSR	MISSED APPROACH: Climb to 1800 then climbing left turn to 3400 on heading 133° and RZC VORTAC R-204 to LNSDY/RZC 10.3 DME and hold.
---	-------	---

ATIS 119.425	RAZORBACK APP CON * 121.0 244.575	NORTHWEST ARKANSAS NTL TOWER * 127.1 (CTAF)	GND CON 121.9
------------------------	---	---	-------------------------



CATEGORY	A	B	C	D	E
S-ILS 16*	1487/24 200 (200-½)				
S-LOC 16	1700/24	413 (500-½)	1700/40		413 (500-¾)
CIRCLING	1740-1	1760-1	2040-2¼	2080-2½	2080-2¾
	452 (500-1)	472 (500-1)	752 (800-2¼)	792 (800-2½)	792 (800-2¾)

SC-1, 27 JAN 2022 to 24 FEB 2022

SC-1, 27 JAN 2022 to 24 FEB 2022