

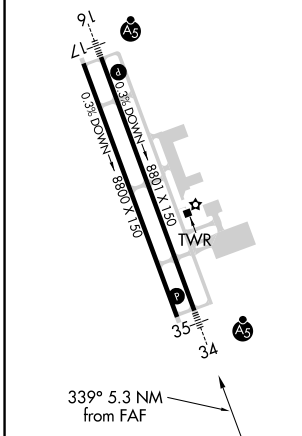
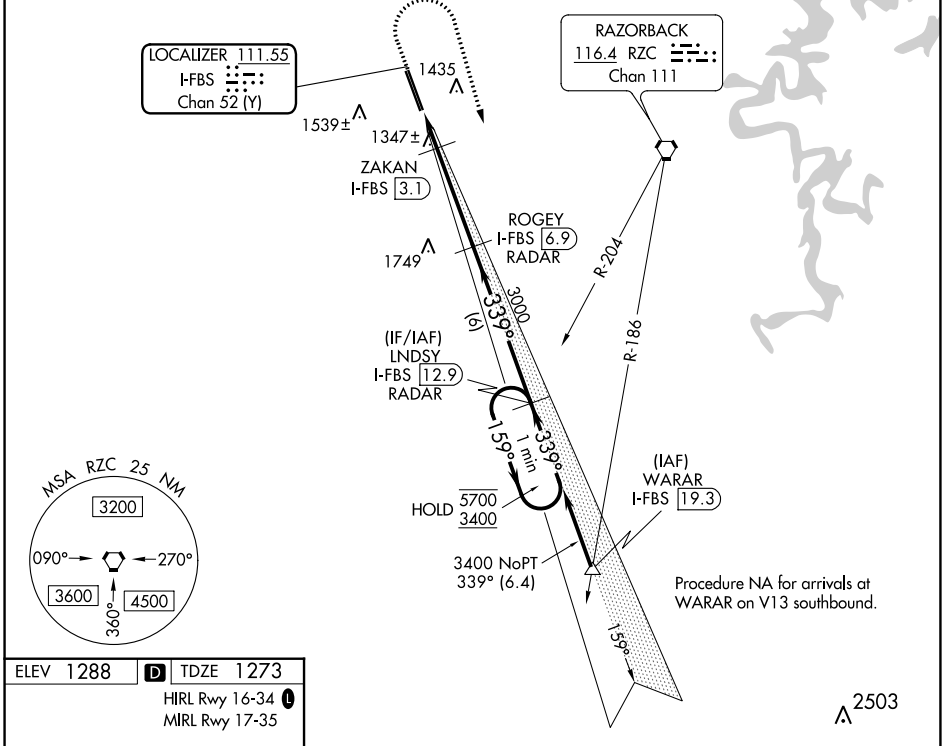
LOC/DME I-FBS <b>111.55</b> Chan 52 (Y)	APP CRS <b>339°</b>	Rwy Idg TDZE Apt Elev	<b>8800</b> <b>1273</b> <b>1288</b>
---	------------------------	-----------------------------	---

# ILS or LOC RWY 34

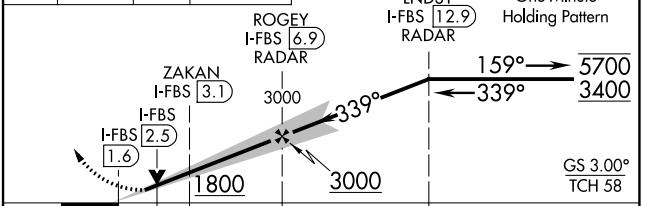
NORTHWEST ARKANSAS NTL (X.N.A)

DME required. ▼ For inop ALS, increase S-ILS 34 Cat E visibility to RVR 4000, and S-LOC 34 Cat E to RVR 5000. ▲ *RVR 1800 authorized with use of FD or AP or HUD to DA.		MALS R AS	MISSED APPROACH: Climb to 1800 then climbing right turn to 3400 on heading 163° and RCZ VORTAC R-204 to LNDYSY/I-FBS 12.9 DME/RADAR and hold.
---	--	--------------	---

ATIS <b>119.425</b>	RAZORBACK APP CON* <b>121.0 244.575</b>	NORTHWEST ARKANSAS NTL TOWER* <b>127.1 (CTAF)</b>	GND CON <b>121.9</b>
------------------------	--	--	-------------------------



ELEV 1288	TDZE 1273	HIRL Rwy 16-34	MIRL Rwy 17-35
-----------	-----------	----------------	----------------



CATEGORY	A	B	C	D	E
S-ILS 34*	1473/24 200 (200-1/2)				
S-LOC 34	1600/24	327 (400-1/2)	1600/26 327 (400-1/2)		
CIRCLING	1740-1 452 (500-1)	1760-1 472 (500-1)	2040-2 1/4 752 (800-2 1/4)	2080-2 1/2 792 (800-2 1/2)	2080-2 3/4 792 (800-2 3/4)

SC-1, 27 JAN 2022 to 24 FEB 2022

SC-1, 27 JAN 2022 to 24 FEB 2022