

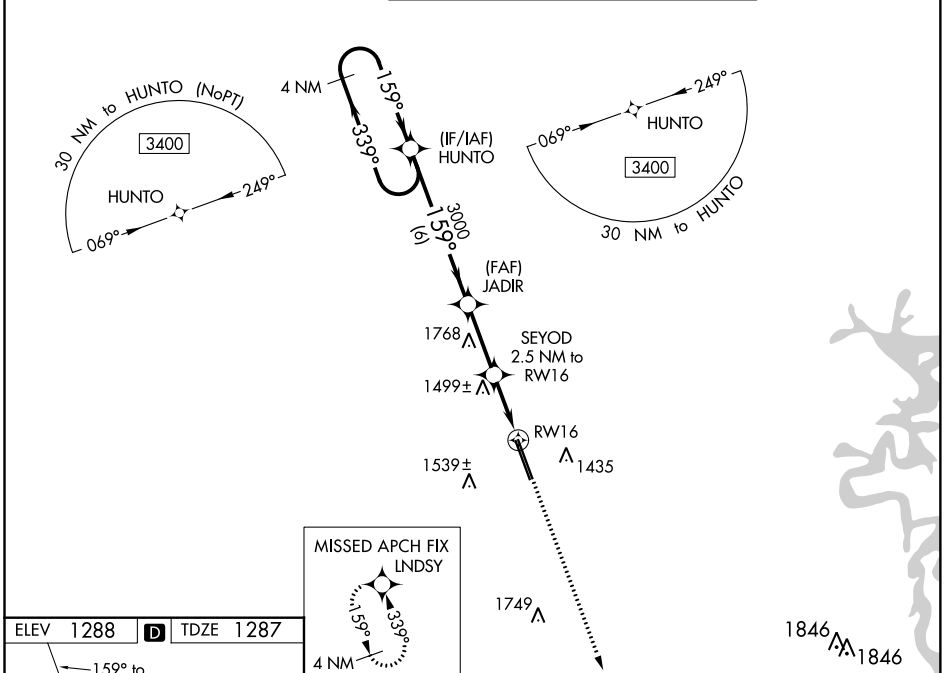
WAAS CH <b>72899</b> <b>W16A</b>	APP CRS <b>159°</b>	Rwy Idg TDZE Apt Elev	<b>8800</b> <b>1287</b> <b>1288</b>
--	------------------------	-----------------------------	---

# RNAV (GPS) RWY 16

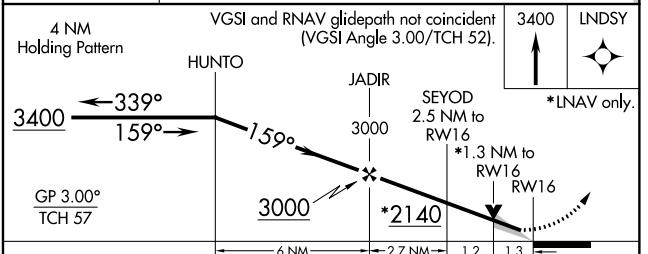
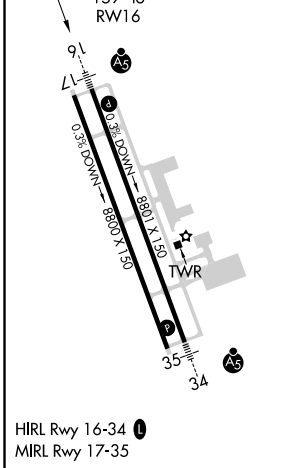
NORTHWEST ARKANSAS NTL (XNA)

<p><b>⚠</b> For uncompensated Baro-VNAV systems, LNAV/VNAV NA below -15°C (5°F) or above 54°C (130°F). DME/DME RNP-0.3 NA. For inop ALS increase LPV Cat E visibility to RVR 4000, LNAV/VNAV all Cats and LNAV Cat C/D/E visibility to 1 1/8 mile. **RVR 1800 authorized with use of FD or AP or HUD to DA.</p>	<p>MALSR</p>	<p>MISSED APPROACH: Climb to 3400 direct LNDYS and hold.</p>
---	--------------	--

ATIS <b>119.425</b>	RAZORBACK APP CON * <b>121.0 244.575</b>	NORTHWEST ARKANSAS NTL TOWER * <b>127.1 (CTAF) 0</b>	GND CON <b>121.9</b>
------------------------	---	---	-------------------------



ELEV 1288	<b>D</b>	TDZE 1287
-----------	----------	-----------



CATEGORY	A	B	C	D	E
LPV DA **		1487/24	200 (200-1/2)		
LNAV/VNAV DA		1722/50	435 (500-1)		
LNAV MDA	1760/24	473 (500-1/2)	1760/50	473 (500-1)	
<b>C</b> CIRCLING	1760-1	472 (500-1)	2040-2 1/4 752 (800-2 1/4)	2080-2 1/2 792 (800-2 1/2)	2080-2 3/4 792 (800-2 3/4)

SC-1, 27 JAN 2022 to 24 FEB 2022

SC-1, 27 JAN 2022 to 24 FEB 2022