

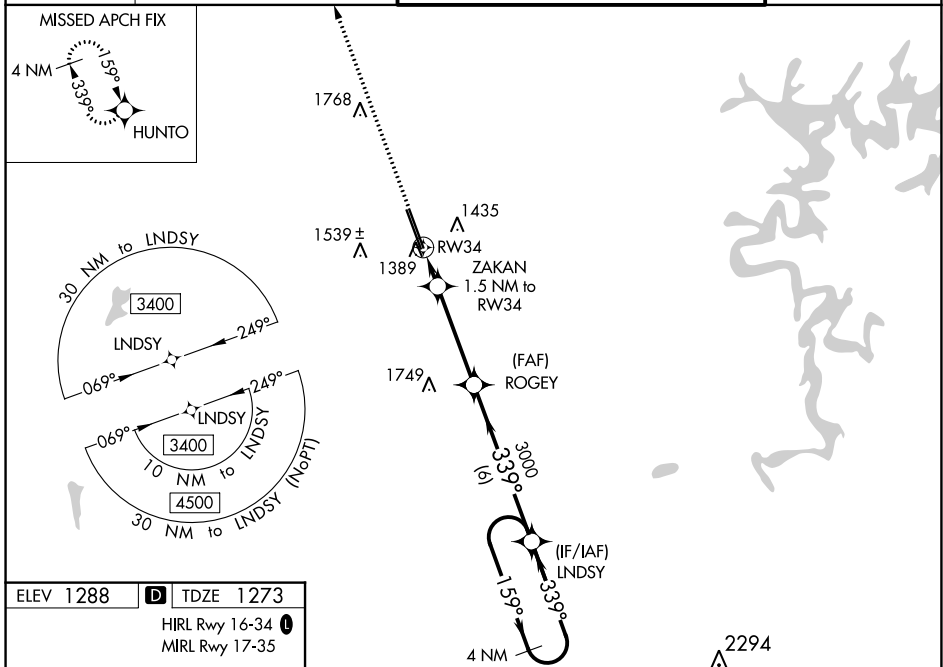
WAAS CH 78299 W34A	APP CRS 339°	Rwy Idg TDZE Apt Elev	8800 1273 1288
--	------------------------	-----------------------------	---

RNAV (GPS) RWY 34

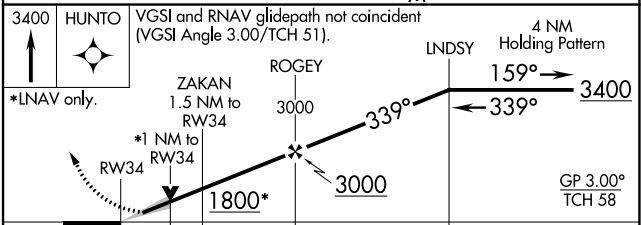
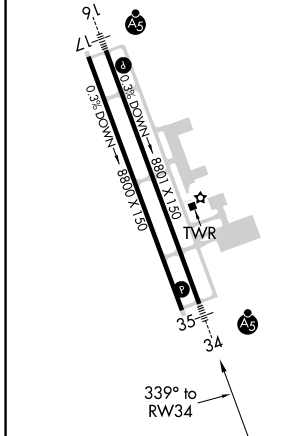
NORTHWEST ARKANSAS NTL (X.N.A)

<p>T For uncompensated Baro-VNAV systems, LNAV/VNAV NA below -15°C (5°F) or above 54°C (130°F). A DME/DME RNP-0.3 NA. For inop ALS, increase LPV Cat E visibility to RVR 4000, LNAV/VNAV all Cats visibility to RVR 4500, and LNAV Cats C/D/E visibility to RVR 5500. **RVR 1800 authorized with use of FD or AP or HUD to DA.</p>	<p>MALS R</p>	<p>MISSED APPROACH: Climb to 3400 direct HUNTO and hold</p>

ATIS 119.425	RAZORBACK APP CON * 121.0 244.575	NORTHWEST ARKANSAS NTL TOWER * 127.1 (CTAF) 0	GND CON 121.9
------------------------	---	---	-------------------------



ELEV 1288	D TDZE 1273
HIRL Rwy 16-34	
MIRL Rwy 17-35	



CATEGORY	A	B	C	D	E
LPV DA **	1473/24		200 (200-½)		
LNAV/ VNAV DA	1550/24		277 (300-½)		
LNAV MDA	1640/24 367 (400-½)		1640/35 367 (400-¾)		
C CIRCLING	1740-1 452 (500-1)	1760-1 472 (500-1)	2040-2¼ 752 (800-2¼)	2080-2½ 792 (800-2½)	2080-2¾ 792 (800-2¾)

SC-1, 27 JAN 2022 to 24 FEB 2022

SC-1, 27 JAN 2022 to 24 FEB 2022