

APP CRS	Rwy Idg	4041
013°	TDZE	273
	Apt Elev	273

RNAV (GPS) RWY 2

TICONDEROGA MUNI (4B6)

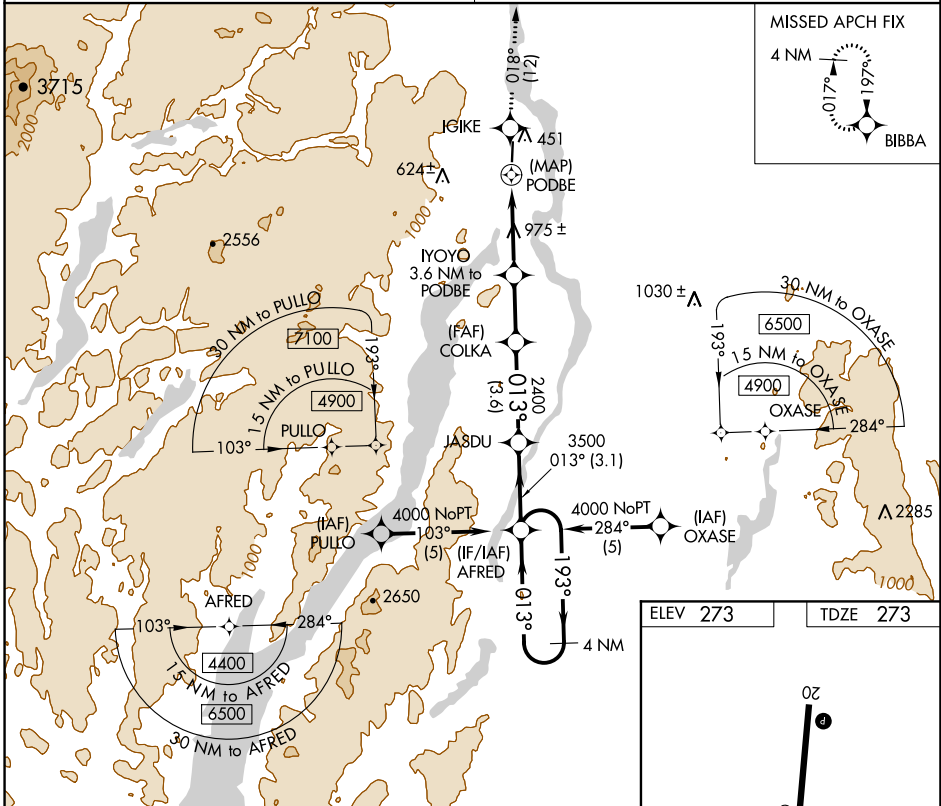
RNP APCH.

NA Use Burlington altimeter setting. Procedure NA at night.
Rwy 2 helicopter visibility reduction below 1 SM NA.

MISSED APPROACH: Climb to 4000 direct IGIKE and on track 018° to BIBBA and hold.

BOSTON CENTER
135.7 282.2

UNICOM
122.8 (CTAF)

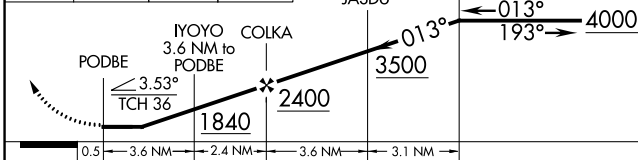


NE-2, 27 JAN 2022 to 24 FEB 2022

NE-2, 27 JAN 2022 to 24 FEB 2022

ELEV 273	TDZE 273
----------	----------

4000	IGIKE	tr	BIBBA	VGS1 and descent angles not coincident (VGS1 Angle 3.00/TCH 46).
↑	✦	018°	✦	4 NM Holding Pattern



CATEGORY	A	B	C	D
LNAV MDA	1520-1¼ 1247 (1300-1¼)	1520-1½ 1247 (1300-1½)		NA

