

WAAS CH 60936 W11A	APP CRS 093°	Rwy Idg TDZE Apt Elev	5405 3246 3251
--	------------------------	-----------------------------	---

RNAV (GPS) RWY 11

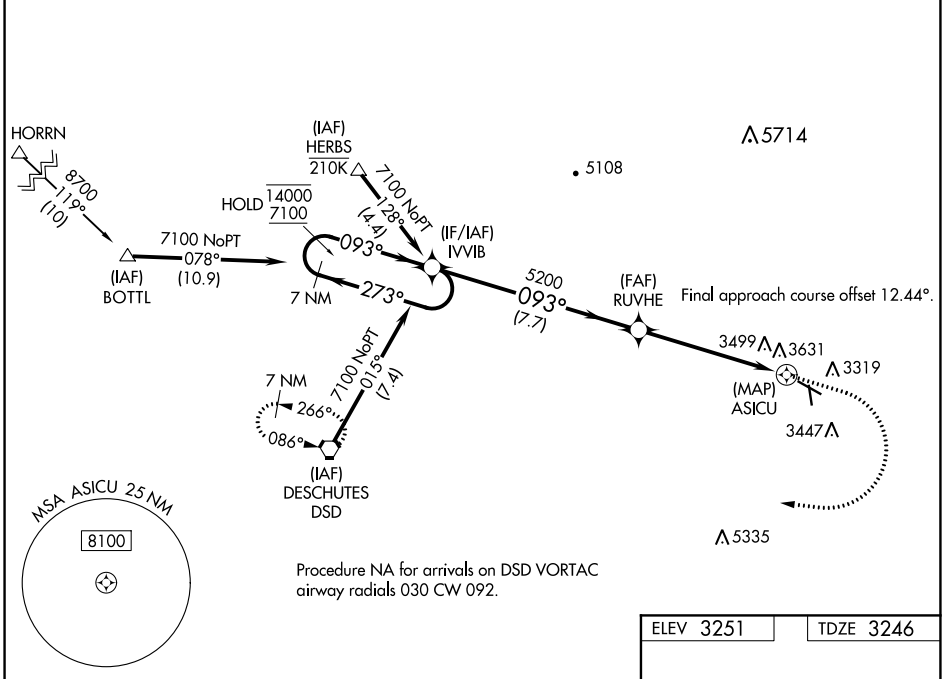
PRINEVILLE (S39)

RNP APCH-GPS.

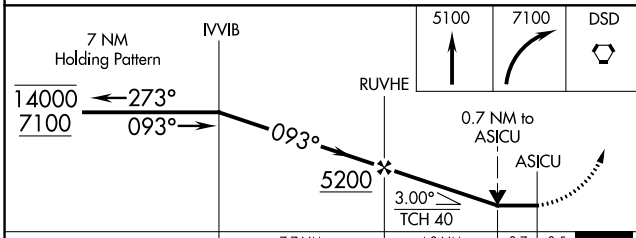
▼ Circling NA for Cat D south of Rwy 11-29.
▲ Rwy 11 helicopter visibility reduction below 3/4 SM NA.
 Circling Rwy 15 NA at night.

MISSED APPROACH: Climb to 5100 then climbing right turn to 7100 direct DSD VORTAC and hold.
 *Missed approach requires minimum climb of 215 feet per NM to 5400.

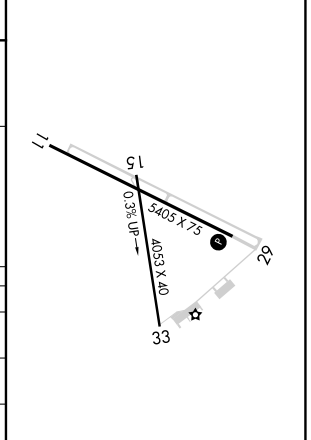
AWOS-3PT 118.325	SEATTLE CENTER 126.15 269.475	UNICOM 122.7 (CTAF) 0
----------------------------	---	---------------------------------



Procedure NA for arrivals on DSD VORTAC airway radials 030 CW 092.



ELEV 3251	TDZE 3246
-----------	-----------



CATEGORY	A	B	C	D
LP MDA*	3660-1	414 (500-1)	3660-1 1/8	414 (500-1 1/8)
LP MDA	3760-1	514 (600-1)	3760-1 3/8	514 (600-1 3/8)
LNAV MDA	3900-1	654 (700-1)	3900-1 7/8	654 (700-1 7/8)
C CIRCLING	3960-1 709 (800-1)	4040-1 789 (800-1)	4040-2 1/4 789 (800-2 1/4)	4040-2 1/2 789 (800-2 1/2)

MIRL Rwy 11-29 **0**
 LIRL Rwy 15-33 **0**

NW-1, 27 JAN 2022 to 24 FEB 2022

NW-1, 27 JAN 2022 to 24 FEB 2022