

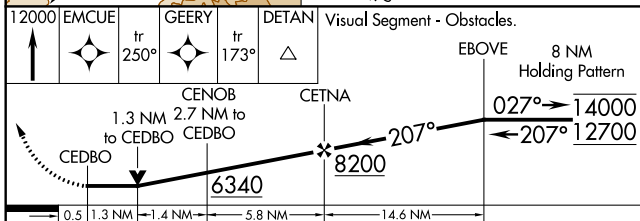
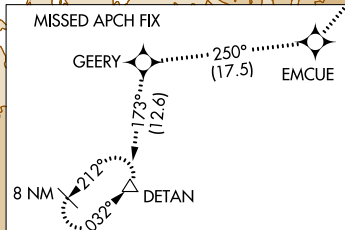
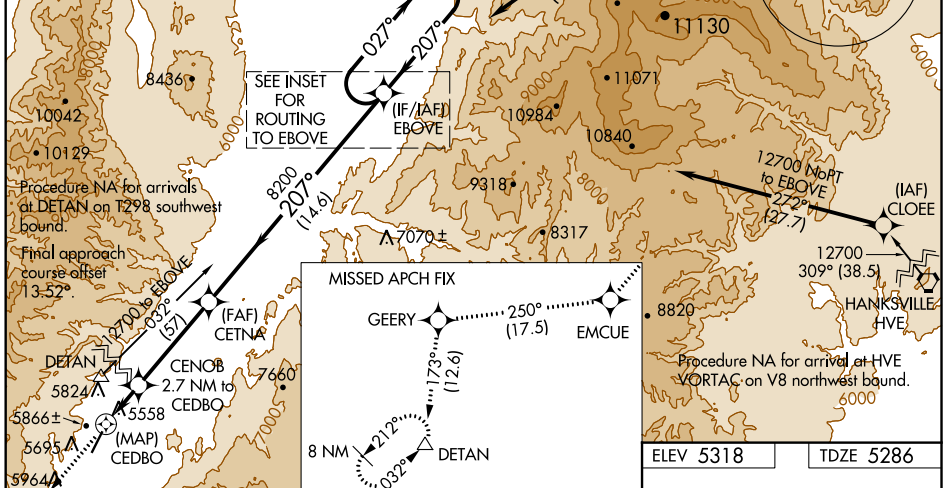
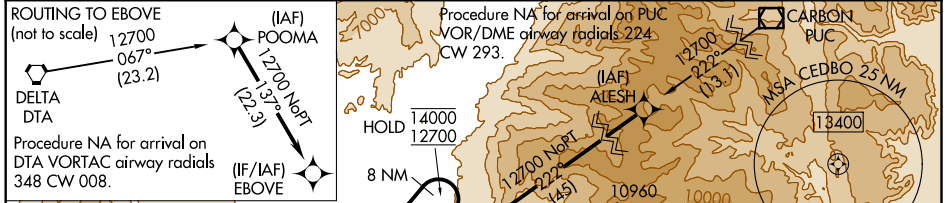
WAAS CH 70537 W19A	APP CRS 207°	Rwy ldg TDZE Apt Elev	7100 5286 5318
--	------------------------	-----------------------------	---

RNAV (GPS) RWY 19

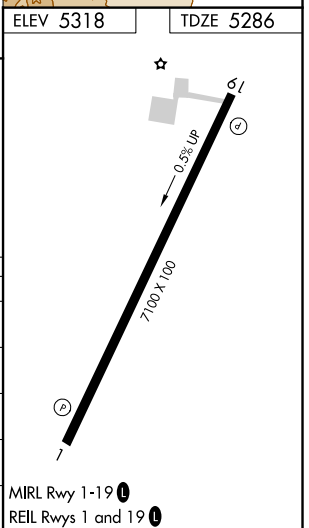
RICHFIELD MUNI (RIF)

RNP APCH. MISSED APPROACH: Climb to 2000 direct EMCUE, and track 250° to GEERY, and track 173° to DETAN and hold.
 *Missed approach requires minimum climb of 380 feet per NM to 9600.
 #Missed approach requires minimum climb of 390 feet per NM to 9600.

AWOS-3 133.375	SALT LAKE CITY CENTER 125.575 379.275	UNICOM 122.8 (CTAF)
--------------------------	---	-------------------------------



CATEGORY	A	B	C	D
LP MDA*	5880-1	594 (600-1)	5880-1¼ 594 (600-1¼)	NA
LP MDA	7340-1¼ 2054 (2100-1¼)	7340-1½ 2054 (2100-1½)	7340-3 2054 (2100-3)	NA
LNAV MDA#	6340-1¼ 1054 (1100-1¼)	6340-1½ 1054 (1100-1½)	6340-3 1054 (1100-3)	NA
LNAV MDA	7440-1¼ 2154 (2200-1¼)	7440-1½ 2154 (2200-1½)	7440-3 2154 (2200-3)	NA
ⓐ CIRCLING	7440-1¼ 2122 (2200-1¼)	7440-1½ 2122 (2200-1½)	7440-3 2122 (2200-3)	NA



SW-4, 27 JAN 2022 to 24 FEB 2022

SW-4, 27 JAN 2022 to 24 FEB 2022