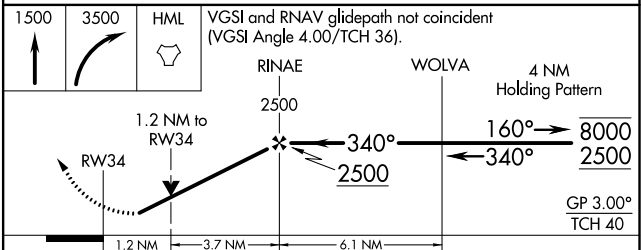
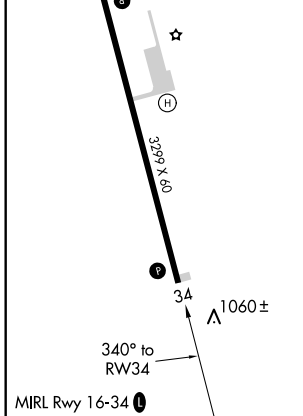
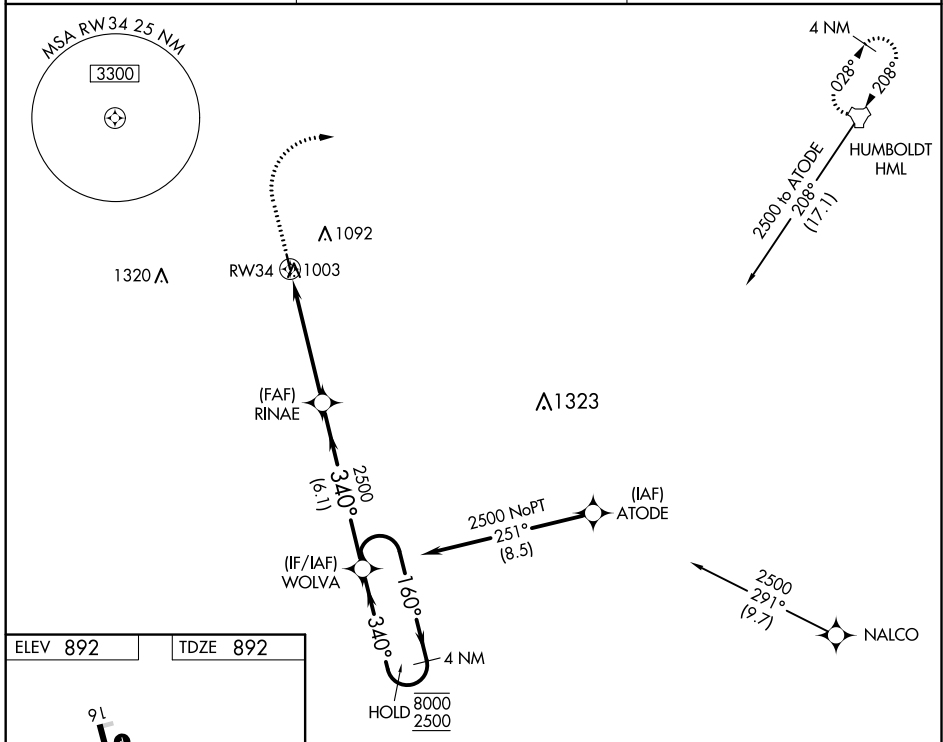


WAAS CH 45630 W34A	APP CRS 340°	Rwy Idg 3299 TDZE 892 Apt Elev 892
--	------------------------	---

RNAV (GPS) RWY 34

CAVALIER MUNI (2C8)

RNP APCH-GPS.	MISSED APPROACH: Climb to 1500 then climbing right turn to 3500 direct HML TACAN and hold.	
<p>▼ Circling Rwy 16 NA at night.</p> <p>▲ Rwy 34 helicopter visibility reduction below 3/4 SM NA.</p>		
AWOS-3 118.275	MINNEAPOLIS CENTER 132.15 269.6	UNICOM 122.8 (CTAF) 0



CATEGORY	A	B	C	D
LPV DA	1157-1 265 (300-1)			NA
LNAV MDA	1440-1	548 (600-1)	1440-1½ 548 (600-1½)	NA
C CIRCLING	1440-1	548 (600-1)	1440-1½ 548 (600-1½)	NA

NC-1, 27 JAN 2022 to 24 FEB 2022

NC-1, 27 JAN 2022 to 24 FEB 2022