

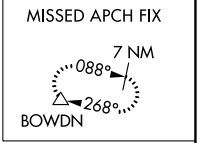
WAAS CH <b>86621</b> <b>W08A</b>	APP CRS <b>077°</b>	Rwy ldg TDZE Apt Elev	<b>4500</b> <b>2254</b> <b>2254</b>
--	------------------------	-----------------------------	---

# RNAV (GPS) RWY 8

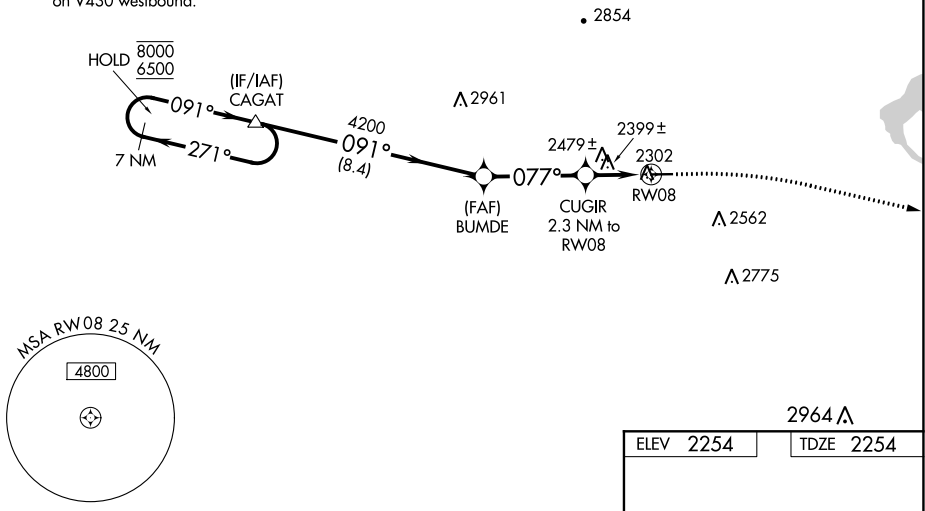
MALTA (M75)

RNP APCH.	MISSED APPROACH: Climb to 6500 direct BOWDN and hold, continue climb-in-hold to 6500.
-----------	---

AWOS-3 <b>119.25</b>	SALT LAKE CITY CENTER <b>126.85 305.2</b>	AUNICOM <b>122.8 (CTAF) 0</b>
-------------------------	--	----------------------------------

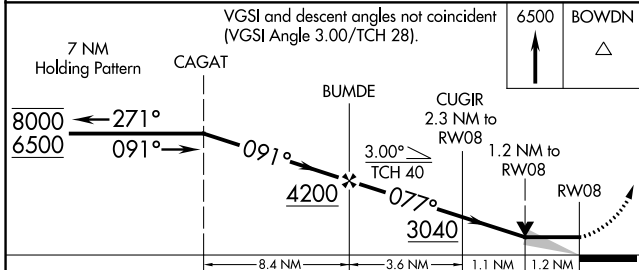
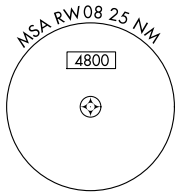


Procedure NA for arrival at CAGAT on V430 westbound.



NW-1, 27 JAN 2022 to 24 FEB 2022

NW-1, 27 JAN 2022 to 24 FEB 2022



CATEGORY	A	B	C	D
LP MDA	2660-1	406 (500-1)		NA
LNAV MDA	2740-1	486 (500-1)		NA
CIRCLING	2800-1 546 (600-1)	2880-1 626 (700-1)		NA

