

# RNAV (GPS) RWY 23

HOLLEY MOUNTAIN AIRPARK (2A2)

APP CRS <b>235°</b>	Rwy ldg TDZE Apt Elev	<b>4795</b> <b>1270</b> <b>1269</b>
------------------------	-----------------------------	---

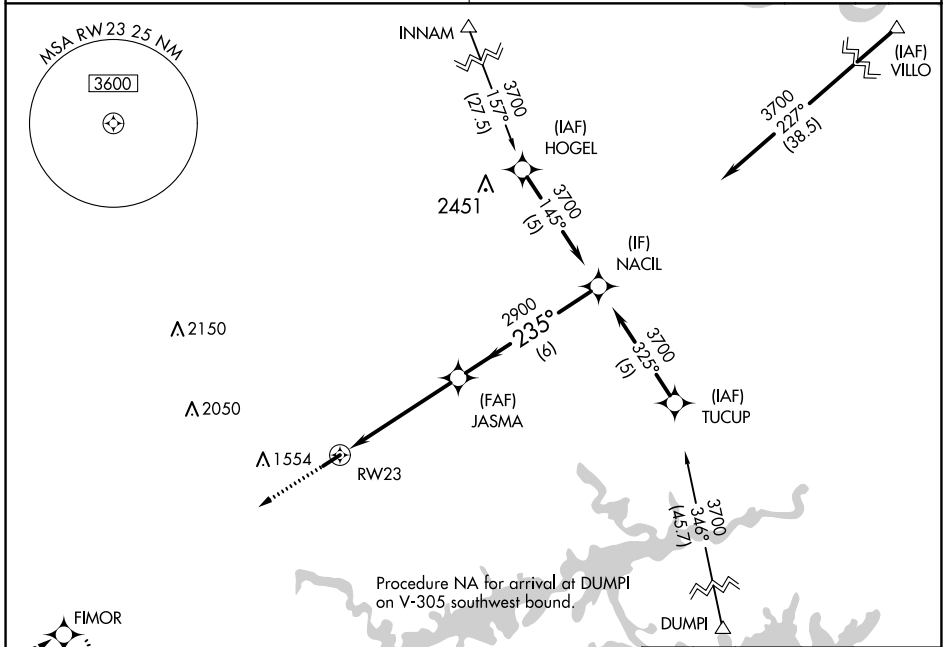
RNP APCH-GPS.

▼ Obtain local altimeter setting on CTAF; when not received, use Marion County Rgnl altimeter setting. Circling Rwy 5 NA at night. Rwy 23 helicopter visibility reduction below  $\frac{3}{4}$  SM NA.

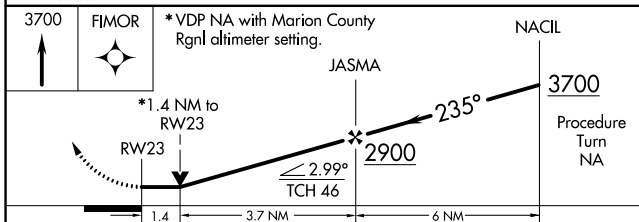
MISSED APPROACH: Climb to 3700 direct FIMOR and hold.

MEMPHIS CENTER **126.85 281.55**

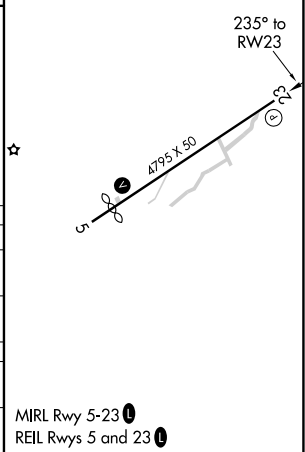
UNICOM **122.7 (CTAF)**



ELEV 1269 TDZE 1270



CATEGORY	A	B	C	D
LNVA MDA	1740-1	470 (500-1)	1740- $1\frac{3}{8}$ 470 (500- $1\frac{3}{8}$ )	NA
CIRCLING	1760-1	491 (500-1)	1800- $1\frac{1}{2}$ 531 (600- $1\frac{1}{2}$ )	NA
MARION COUNTY RGNL ALTIMETER SETTING MINIMUMS				
LNVA MDA	1900-1	630 (700-1)	1900- $1\frac{3}{4}$ 630 (700- $1\frac{3}{4}$ )	NA
CIRCLING	1940-1	671 (700-1)	1960-2 691 (700-2)	NA



SC-1, 27 JAN 2022 to 24 FEB 2022

SC-1, 27 JAN 2022 to 24 FEB 2022

MIRL Rwy 5-23  
REIL Rwys 5 and 23