

# RNAV (GPS) RWY 5

HOLLEY MOUNTAIN AIRPARK (2A2)

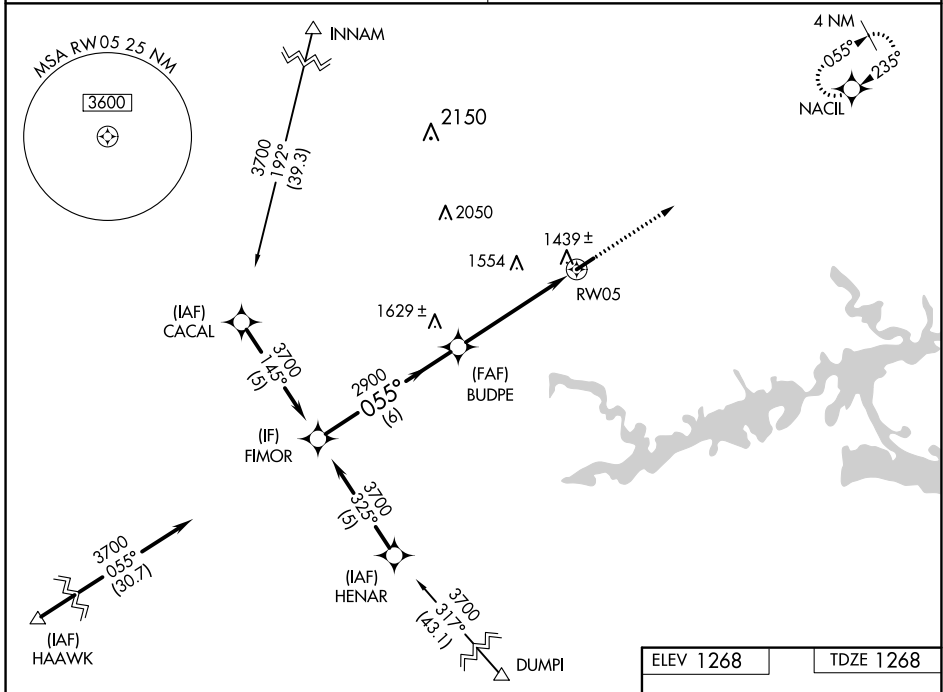
APP CRS	Rwy Idg	<b>4397</b>
<b>055°</b>	TDZE	<b>1268</b>
	Apt Elev	<b>1268</b>

RNP APCH.

▼ Obtain local altimeter setting on CTAF; when not received, use Marion County Rgnl altimeter setting. Straight-in Rwy 5 NA at night, Circling Rwy 5 NA at night. Rwy 5 helicopter visibility reduction below 1 SM NA.

▲ NA MISSED APPROACH: Climb to 3700 direct NACIL and hold.

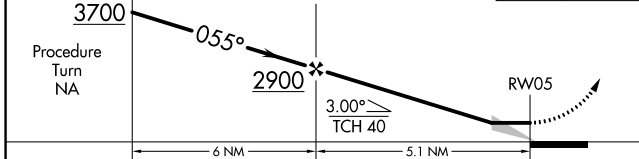
MEMPHIS CENTER	UNICOM
<b>126.85 281.55</b>	<b>122.7 (CTAF) 0</b>



Procedure Turn NA

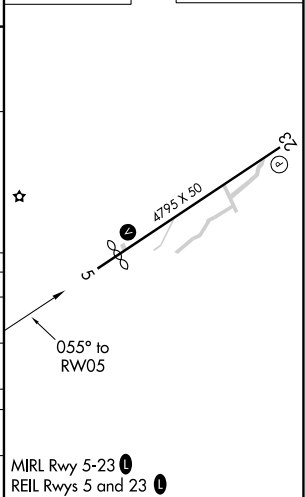
VGSI and descent angles not coincident (VGSI Angle 3.50/TCH 31).

3700 NACIL



CATEGORY	A	B	C	D
RNAV MDA	1760-1	492 (500-1)	1760-1¼ 492 (500-1¼)	NA
CIRCLING	1760-1	492 (500-1)	1780-1½ 512 (600-1½)	NA
MARION COUNTY RGNL ALTIMETER SETTING MINIMUMS				
RNAV MDA	1920-1	652 (700-1)	1920-1¾ 652 (700-1¾)	NA
CIRCLING	1940-1	672 (700-1)	1960-2 692 (700-2)	NA

ELEV 1268	TDZE 1268
-----------	-----------



SC-1, 27 JAN 2022 to 24 FEB 2022

SC-1, 27 JAN 2022 to 24 FEB 2022

MIRL Rwy 5-23 0  
REIL Rws 5 and 23 0