

APP CRS 290°	Rwy Idg TDZE Apt Elev	N/A N/A 2254
------------------------	-----------------------------	---------------------------

RNAV (GPS)-A

MARIPOSA-YOSEMITE (MPI)

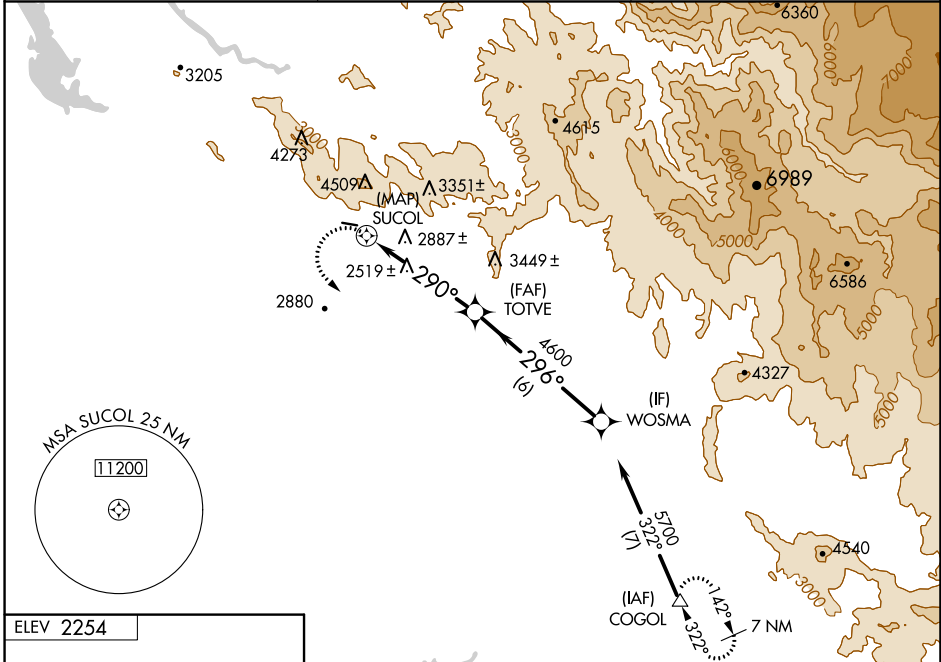
▽ DME/DME RNP-0.3 NA.
▲ NA
 Procedure NA at night.
 When local altimeter setting not received, use Atwater altimeter setting and increase all MDA 360 feet.

MISSED APPROACH: Climbing left turn to 7000 direct COGOL and hold.

AWOS-3
135.6

OAKLAND CENTER
121.25 327.0

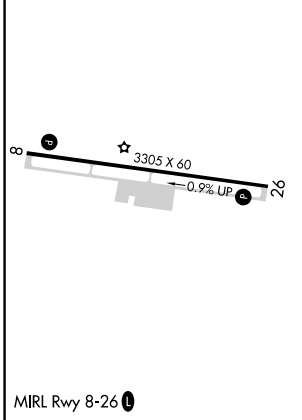
UNICOM
122.7 (CTAF) 0



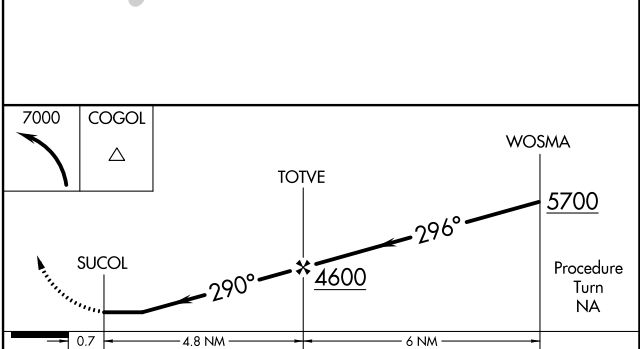
SW-2, 27 JAN 2022 to 24 FEB 2022

SW-2, 27 JAN 2022 to 24 FEB 2022

ELEV 2254



Procedure NA for arrival at COGOL via V459 southeast bound.



CATEGORY	A	B	C	D
C CIRCLING	3900-1¼ 1646 (1700-1¼)	3900-1½ 1646 (1700-1½)	NA	