

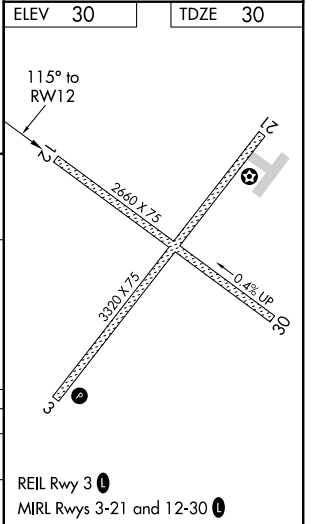
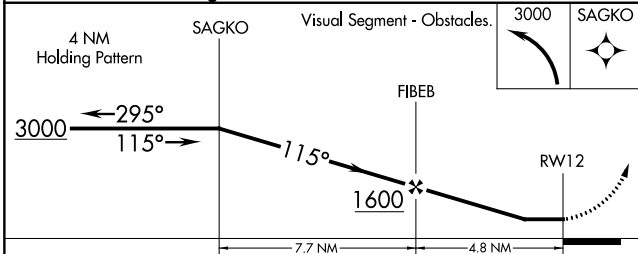
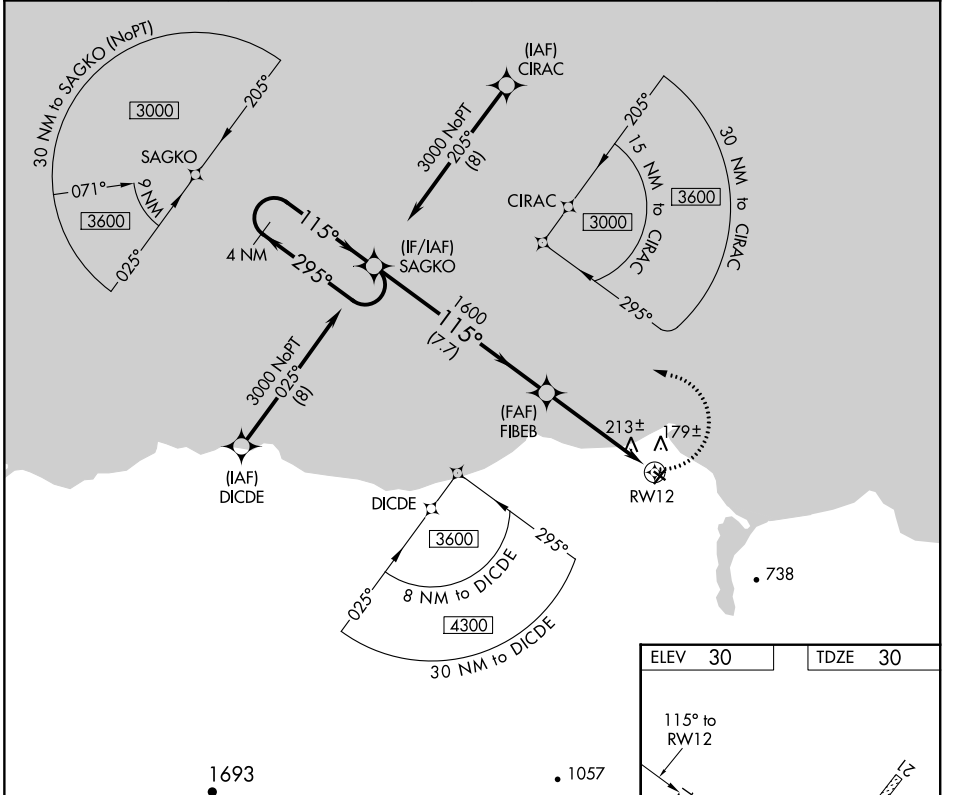
APP CRS	Rwy Idg	<b>2660</b>
<b>115°</b>	TDZE	<b>30</b>
	Apt Elev	<b>30</b>

# RNAV (GPS) RWY 12

DEERING (DEE)(PADE)

<p><b>▼</b> DME/DME RNP-0.3 NA.</p> <p><b>▲</b> Rwy 12 helicopter visibility reduction below 1 SM NA.</p> <p><b>☄</b> -40°C Straight-in Rwy 12 NA at night, Circling Rwy 12, 30 NA at night.</p>	<p>MISSED APPROACH: Climbing left turn to 3000 direct SAGKO and hold.</p>
--	---

ASOS <b>135.5</b>	ANCHORAGE CENTER <b>119.2 263.0</b>	KOTZEBUE RADIO <b>122.25</b>	CTAF <b>122.9 0</b>
----------------------	--	---------------------------------	------------------------



CATEGORY	A	B	C	D
LNNAV MDA	520-1	490 (500-1)	520-1 <sup>3</sup> / <sub>8</sub> 490 (500-1 <sup>3</sup> / <sub>8</sub> )	NA
<b>☉</b> CIRCLING	680-1 650 (700-1)	840-1 810 (900-1)	840-2 <sup>1</sup> / <sub>2</sub> 810 (900-2 <sup>1</sup> / <sub>2</sub> )	NA

AK, 27 JAN 2022 to 24 MAR 2022

AK, 27 JAN 2022 to 24 MAR 2022