

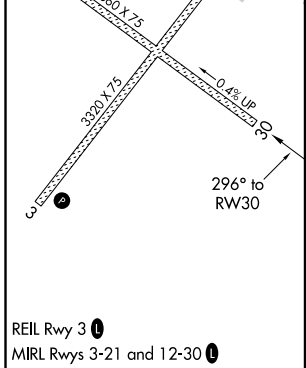
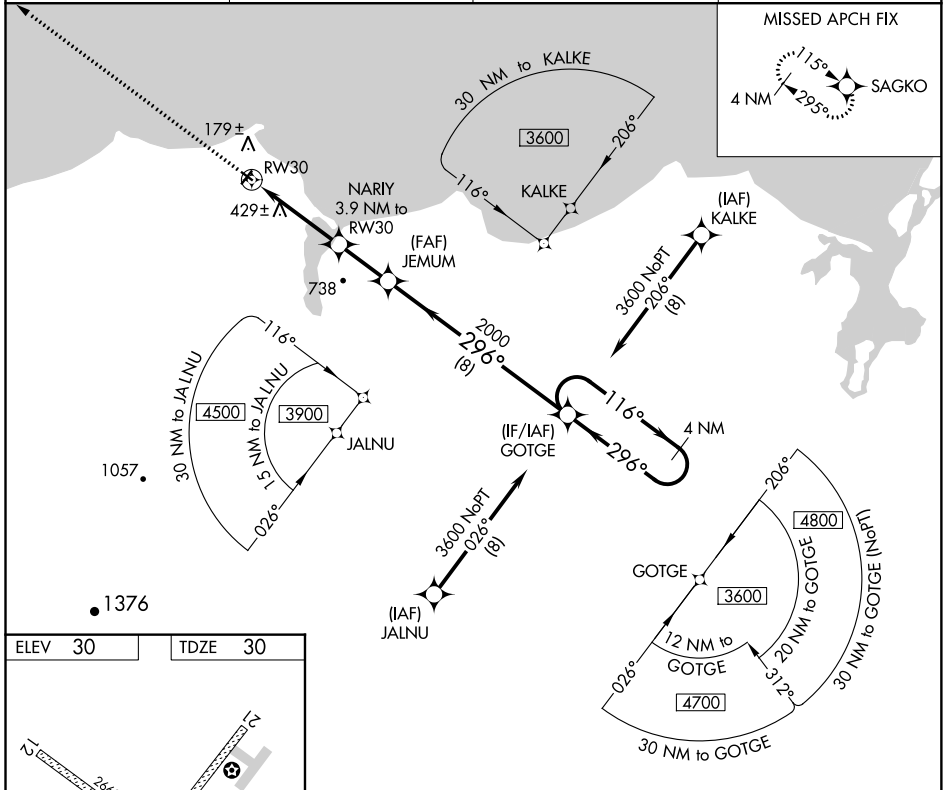
APP CRS	Rwy Idg	<b>2660</b>
<b>296°</b>	TDZE	<b>30</b>
	Apt Elev	<b>30</b>

# RNAV (GPS) RWY 30

DEERING (DEE)(PADE)

<p><b>V</b> DME/DME RNP-0.3 NA.</p> <p><b>A</b> Rwy 30 helicopter visibility reduction below 1 SM NA.</p> <p><b>⊗</b> -40°C Straight-in Rwy 12 NA at night, Circling Rwy 12, 30 NA at night.</p>	<p>MISSED APPROACH: Climb to 3000 direct SAGKO and hold.</p>
--	--

ASOS <b>135.5</b>	ANCHORAGE CENTER <b>119.2 263.0</b>	KOTZEBUE RADIO <b>122.25</b>	CTAF <b>122.9</b>
----------------------	--	---------------------------------	----------------------



3000	SAGKO	Visual Segment - Obstacles.	GOTGE	4 NM Holding Pattern
↑	✧			
		JEMUM		
		NARYI 3.9 NM to RWY 30		
		RWY 30		
		1300	2000	3600
		3.9 NM	2.2 NM	8 NM
		296°	116°	296°
CATEGORY	A	B	C	D
LNAV MDA	740-1	710 (800-1)	740-2 710 (800-2)	NA
<b>C</b> CIRCLING	740-1 710 (800-1)	840-1 810 (900-1)	840-2¼ 810 (900-2¼)	NA

AK, 27 JAN 2022 to 24 MAR 2022

AK, 27 JAN 2022 to 24 MAR 2022