

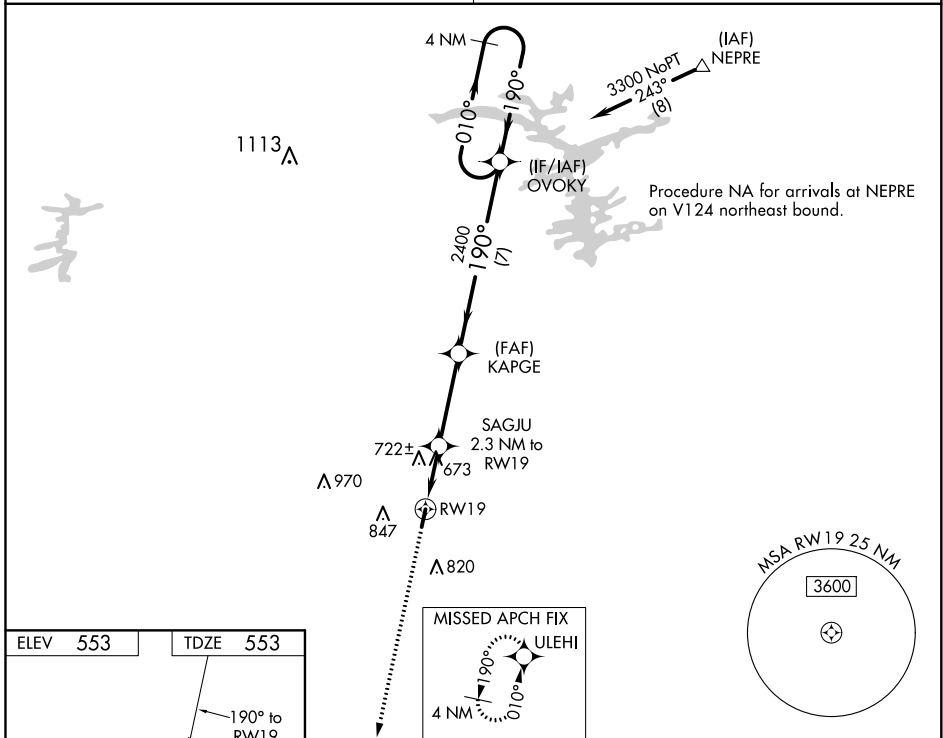
WAAS CH 65921 W19A	APP CRS 190°	Rwy Idg 3994 TDZE 553 Apt Elev 553
--	------------------------	---

RNAV (GPS) RWY 19

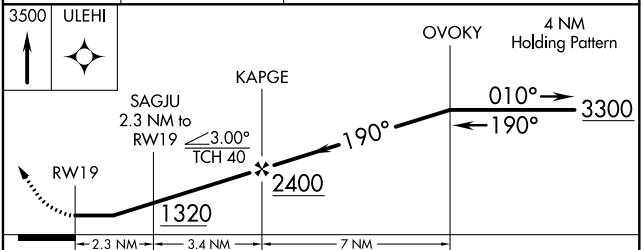
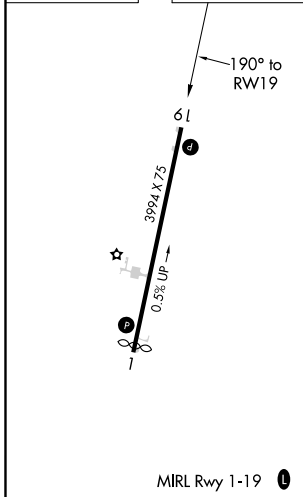
HOWARD COUNTY (M77)

RNP APCH.	<p>▼ Procedure NA at night. Rwy 19 helicopter visibility reduction below 1 SM NA. ▲ NA Use DE Queen altimeter setting; when not received, use Texarkana altimeter setting and increase all MDA 20 feet.</p>	MISSED APPROACH: Climb to 3500 direct ULEHI and hold.
-----------	--	---

FORT WORTH CENTER 123.925 269.475	CTAF 122.9 0
---	------------------------



ELEV 553	TDZE 553
----------	----------



CATEGORY	A	B	C	D
LP MDA	1080-1	527 (600-1)		NA
LNAV MDA	1080-1	527 (600-1)		NA
CIRCLING	1100-1 547 (600-1)	1240-1 687 (700-1)		NA

SC-1, 27 JAN 2022 to 24 FEB 2022

SC-1, 27 JAN 2022 to 24 FEB 2022