

APP CRS 092°	Rwy Idg TDZE Apt Elev	N/A N/A 200
------------------------	-----------------------------	--

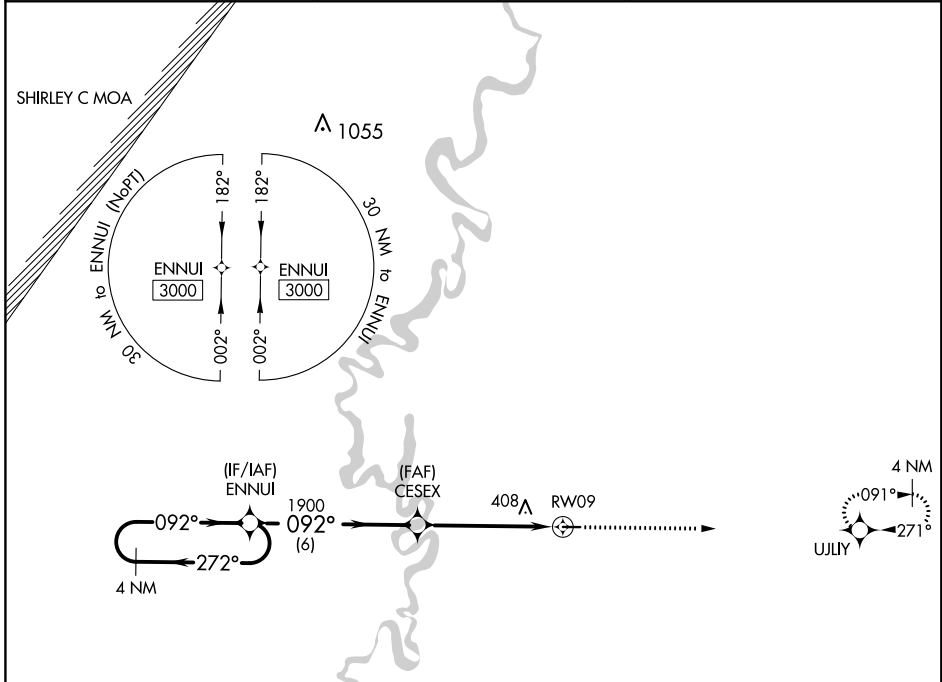
RNAV (GPS)-A

WOODRUFF COUNTY (M60)

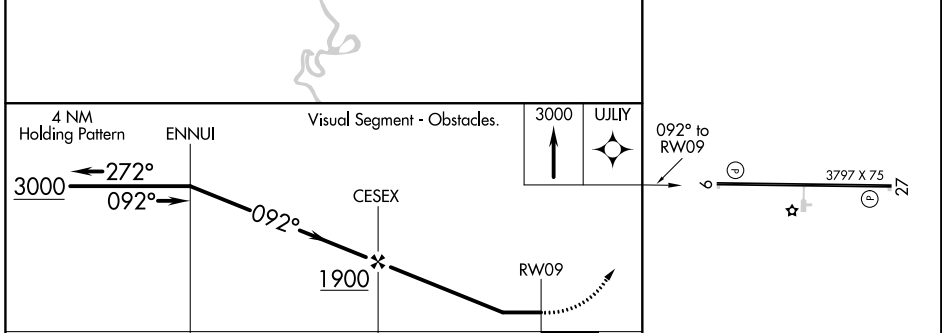
NA Rwy 9, 27 helicopter visibility reduction below 1 SM NA. DME/DME RNP-0.3 NA.
 Procedure NA at night. Use Newport altimeter setting.

MISSED APPROACH:
 Climb to 3000 direct
 JULY and hold.

M19 AWOS-3PT 118.15	MEMPHIS CENTER 135.3 335.8	CTAF 122.9 0
-------------------------------	--------------------------------------	------------------------



ELEV	200
------	-----



CATEGORY	A	B	C	D
C CIRCLING	740-1 540 (600-1)	820-1 620 (700-1)	NA	

MIRL Rwy 9-27 **0**

SC-1, 27 JAN 2022 to 24 FEB 2022

SC-1, 27 JAN 2022 to 24 FEB 2022