

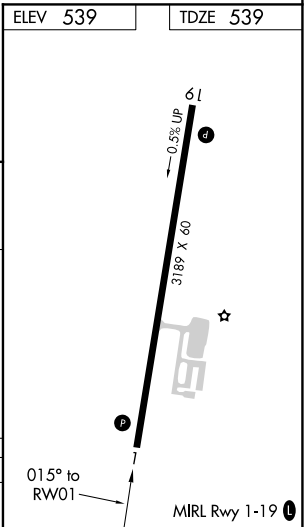
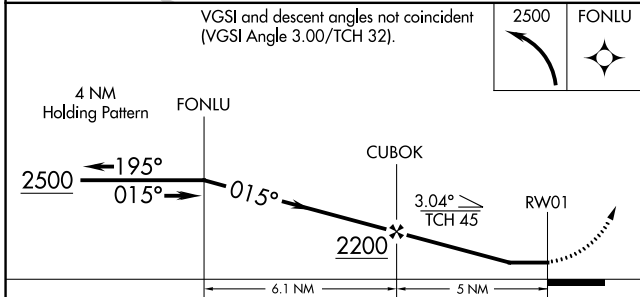
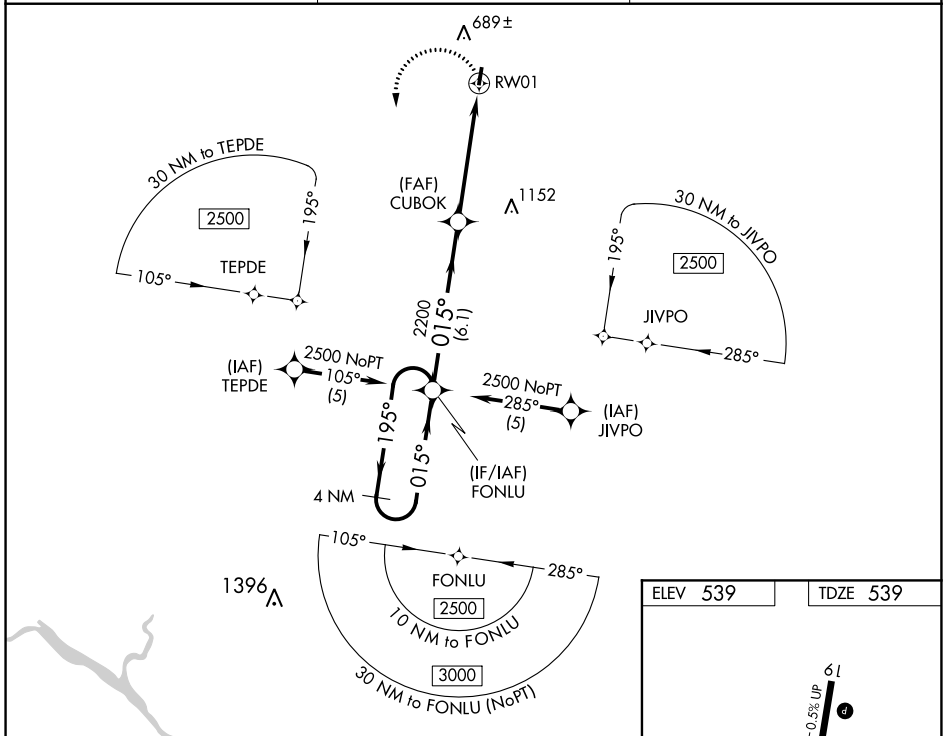
APP CRS	Rwy Idg	3189
015°	TDZE	539
	Apt Elev	539

RNAV (GPS) RWY 1

SALUDA COUNTY (6J4)

RNP APCH.		MISSED APPROACH: Climbing left turn to 2500 direct FONLU and hold.
▼ ▲ NA	Procedure NA at night. Rwy 1 helicopter visibility reduction below 1 SM NA. Use Aiken altimeter setting; when not received, use Augusta Rgnl at Bush Fld altimeter setting and increase all MDA 100 feet and increase LNAV Cat C visibility ¼ SM.	

AIK AWOS-3 118.025	AUGUSTA APP CON * 119.15	CTAF 122.9 0
------------------------------	------------------------------------	------------------------



CATEGORY	A	B	C	D
LNAV MDA	1160-1	621 (700-1)	1160-1¾ 621 (700-1¾)	NA

SE-2, 27 JAN 2022 to 24 FEB 2022

SE-2, 27 JAN 2022 to 24 FEB 2022