

| | |
|------------------------|------------------------|
| APP CRS 195° | Rwy Idg 3189 |
| | TDZE 539 |
| | Apt Elev 539 |

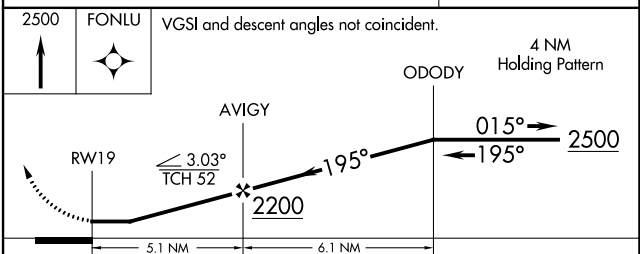
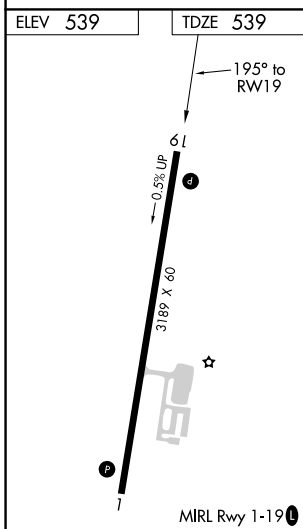
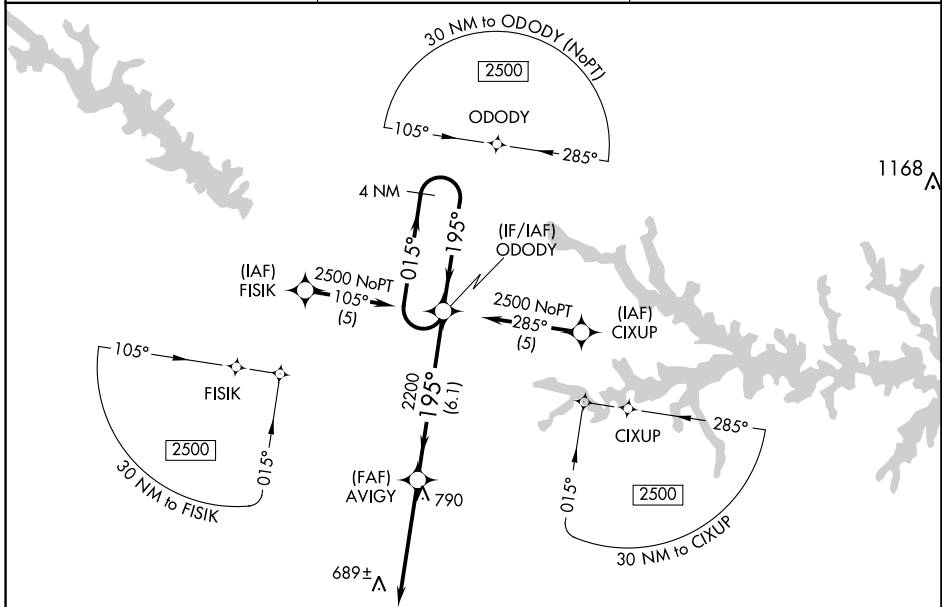
RNAV (GPS) RWY 19

SALUDA COUNTY (6J4)

NA DME/DME RNP-0.3 NA. Procedure NA at night. Visibility reduction by helicopters NA. Use Aiken altimeter setting, when not received, use Augusta Rgnl altimeter setting and increase all MDAs 100 feet, increase LNAV Cat C visibility ¼ SM and Circling Cat C visibility ½ SM.

MISSED APPROACH: Climb to 2500 direct FONLU and hold.

| | | |
|------------------------------|------------------------------------|------------------------|
| AIK AWOS-3 118.025 | AUGUSTA APP CON ★ 119.15 | CTAF 122.9 0 |
|------------------------------|------------------------------------|------------------------|



| CATEGORY | A | B | C | D |
|----------|-----------------------|-----------------------|-------------------------|----|
| LNAV MDA | 1060-1 | 521 (600-1) | 1060-1½ 521 (600-1½) | NA |
| CIRCLING | 1100-1 561 (600-1) | 1160-1 621 (700-1) | 1180-1¾ 641 (700-1¾) | NA |

SE-2, 27 JAN 2022 to 24 FEB 2022

SE-2, 27 JAN 2022 to 24 FEB 2022