

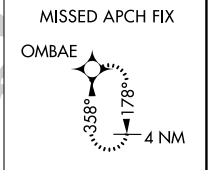
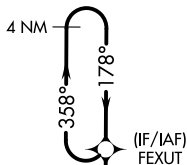
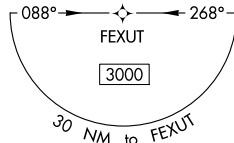
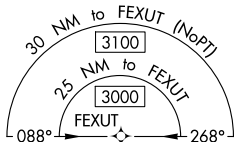
WAAS CH 81840 W18A	APP CRS 178°	Rwy Idg TDZE Apt Elev	4228 779 783
--	------------------------	-----------------------------	---

RNAV (GPS) RWY 18

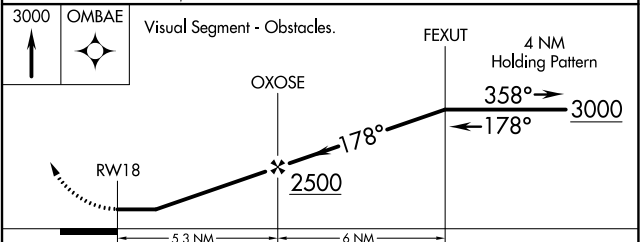
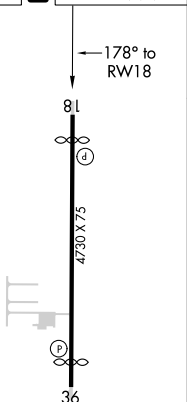
SOUTH GRAND LAKE RGNL (1K8)

RNP APCH.	Rwy 18 helicopter visibility reduction below 1 SM NA. Use Grove altimeter setting; when not received, use Claremore altimeter setting: increase all MDA 40 feet, LP Cat C visibility 1/8 mile, LNAV Cat B visibility 1/4 mile and Cat C 1/2 mile. Straight-in Rwy 18 NA at night, Circling Rwy 18 NA at night.	MISSED APPROACH: Climb to 3000 direct OMBAE and hold.
-----------	--	---

GMJ AWOS-3 119.025	KANSAS CITY CENTER 128.6 282.325	CTAF 122.9 0
------------------------------	--	------------------------



ELEV 783	D	TDZE 779
----------	----------	----------



CATEGORY	A	B	C	D
LP MDA	1320-1	541 (600-1)	1320-1 5/8 541 (600-1 5/8)	NA
LNAV MDA	1500-1	721 (800-1)	1500-2 721 (800-2)	NA
C CIRCLING	1540-1 757 (800-1)	1620-1 1/4 837 (900-1 1/4)	1620-2 1/2 837 (900-2 1/2)	NA

MIRL Rwy 18-36 0

SC-1, 27 JAN 2022 to 24 FEB 2022

SC-1, 27 JAN 2022 to 24 FEB 2022