

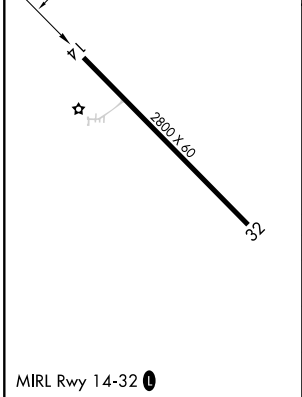
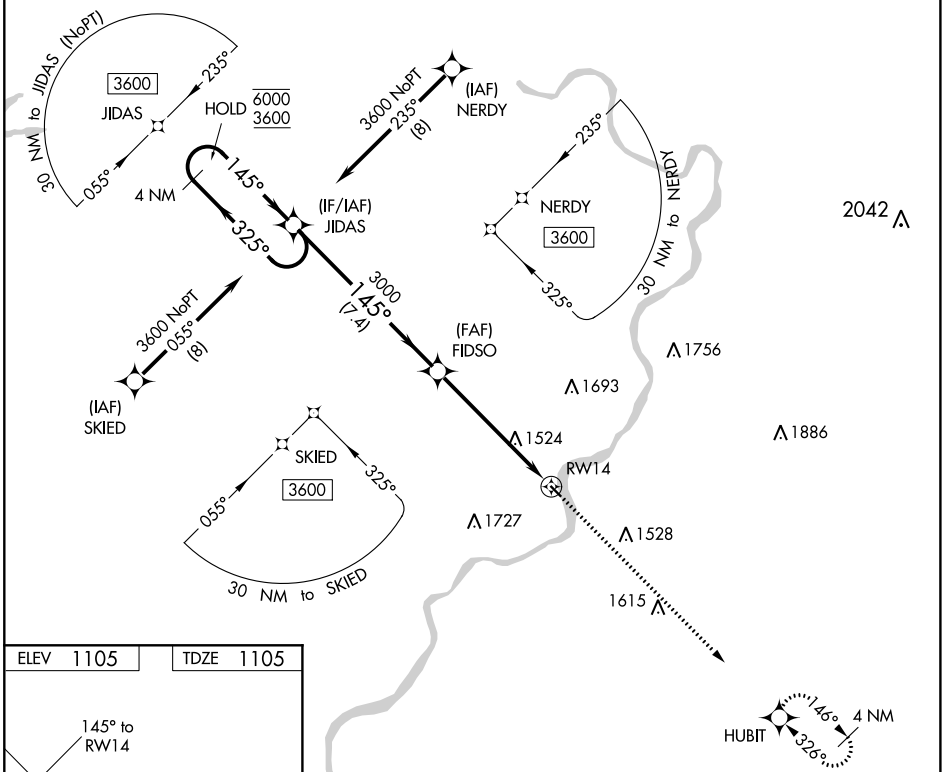
WAAS CH 97343 W14A	APP CRS 145°	Rwy Idg 2800 TDZE 1105 Apt Elev 1105
----------------------------------------	------------------------	-----------------------------------------------------------------

RNAV (GPS) RWY 14

MCVILLE (6P7)

RNP APCH.	MISSED APPROACH: Climb to 4000 direct HUBIT and hold.
▼ Procedure NA at night. Rwy 14 helicopter visibility reduction below 1 SM NA. Use Pittsburgh/Butler Rgnl altimeter setting.	

BTP AWOS-3PT 121.45	JOHNSTOWN APP CON 121.2	UNICOM 123.0 (CTAF)	122.8
-------------------------------	-----------------------------------	-------------------------------	--------------



4 NM Holding Pattern		JIDAS	Visual Segment - Obstacles.	4000	HUBIT
6000 ← 325°		→ 145°	FIDSO	↑	
3600		→ 145°	3000		
		7.4 NM	5.8 NM		
CATEGORY	A	B	C	D	
LP MDA	1840-1	735 (800-1)		NA	
LNAV MDA	1840-1	735 (800-1)		NA	
CIRCLING	1860-1 755 (800-1)	1880-1 775 (800-1)		NA	

NE-4, 27 JAN 2022 to 24 FEB 2022

NE-4, 27 JAN 2022 to 24 FEB 2022