

|  |                        |   |
|--|------------------------|---|
| WAAS<br>CH <b>69507</b><br><b>W06A</b> | APP CRS<br><b>059°</b> | Rwy Idg <b>3998</b><br>TDZE <b>132</b><br>Apt Elev <b>132</b> |
|--|------------------------|---|

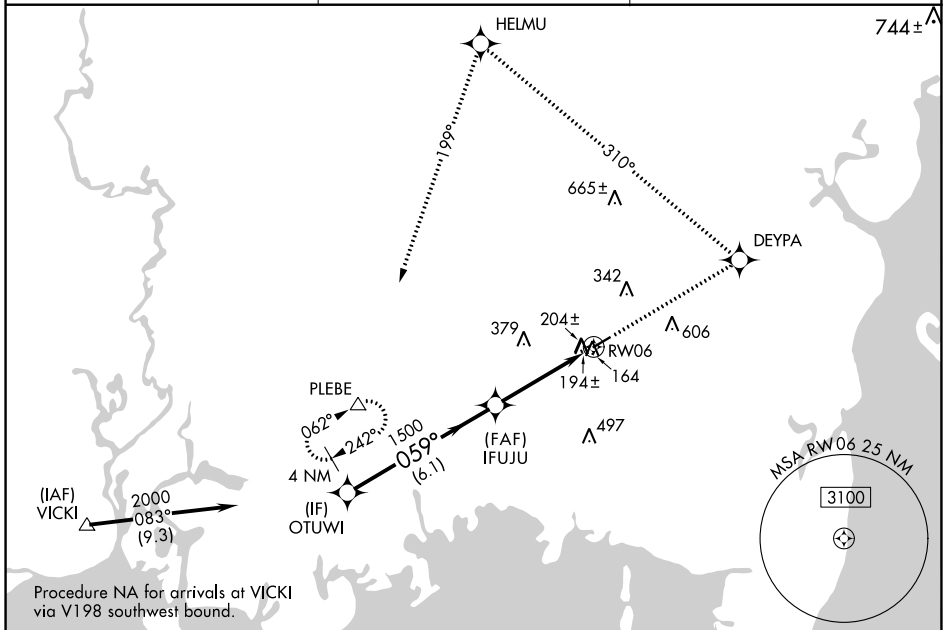
# RNAV (GPS) RWY 6

ST ELMO (2R.5)

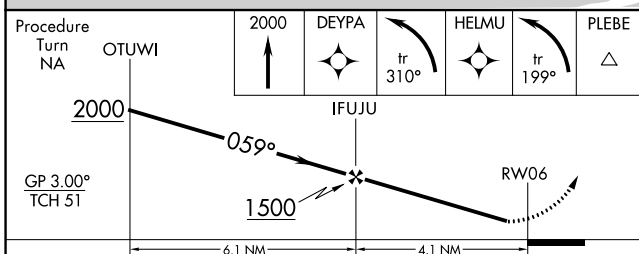
**NA** DME/DME RNP-0.3 NA. Visibility reduction by helicopters NA. Use Mobile Rgnl altimeter setting; when not received use Pascagoula altimeter setting and increase DA to 483 feet and all MDA 20 feet.

**MISSED APPROACH:** Climb to 2000 direct DEYPA and left turn via 310° track to HELMU and left turn via 199° track to PLEBE and hold.

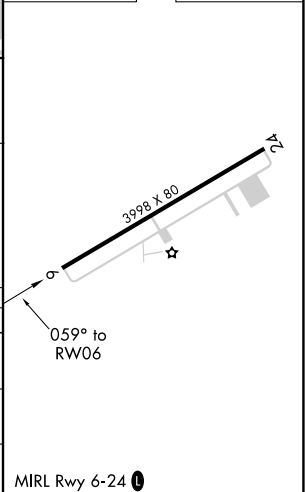
|  |   |                       |
|--|---|-----------------------|
| MOBILE APP CON ★<br><b>121.0 307.1</b> | HOUSTON CENTER<br><b>127.65 285.475</b> | CTAF<br><b>122.90</b> |
|--|---|-----------------------|



|          |          |
|----------|----------|
| ELEV 132 | TDZE 132 |
|----------|----------|



| CATEGORY | A      | B            | C                      | D  |
|----------|--------|--------------|------------------------|----|
| LPV DA   | 475-1¼ | 343 (400-1¼) |                        | NA |
| LNAV MDA | 540-1  | 408 (500-1)  | 540-1¼<br>408 (500-1¼) | NA |
| CIRCLING | 720-1  | 588 (600-1)  | 960-2½<br>828 (900-2½) | NA |



SE-4, 24 FEB 2022 to 24 MAR 2022

SE-4, 24 FEB 2022 to 24 MAR 2022