

WARROAD INTL MEML (RRT)(KRRT) 2 NW UTC-6(-5DT) N48°56.49' W95°20.91'

TWIN CITIES

1076 B LRA NOTAM FILE RRT

H-2J, L-14H

RWY 13-31: H5400X100 (ASPH) S-30, D-40 HIRL

IAP

RWY 13: MALSR. REIL. PAPI(P4L)—GA 3.0° TCH 29'.**RWY 31:** MALSR. PAPI(P4L)—GA 3.0° TCH 29'. Trees.**RWY 04-22:** 2987X150 (TURF)**SERVICE:** FUEL 100LL, JET A LGT Actvt or incr instst MALSR Rwy 13 and 31; REIL Rwy 13; HIRL Rwy 13-31—CTAF. PAPI Rwy 13 and 31 opr consly; HIRL Rwy 13-31 preset low instst. PCL unavbl drg dalgt hrs.**AIRPORT REMARKS:** Attended Mon-Fri 1300-2300Z. For ser ngts and wkends call AMGR. Deer and birds on and invof arpt. Rwy 04-22 CLOSED winter months. 100LL fuel avbl H24 Self ser via credit card. Cust avbl 1 hr PPR call 218-386-1676, cell 218-689-3880, otr: 218-386-2796. Rwy 04-22 marked with yellow cones. Rwy 31 calm wind runway.**AIRPORT MANAGER:** 218-386-1691**WEATHER DATA SOURCES:** AWOS-3 119.925 (218) 386-1813.**COMMUNICATIONS:** CTAF/UNICOM 123.05

MINNEAPOLIS CENTER APP/DEP CON 134.75

WARROAD RCO 122.55 (PRINCETON RADIO)

GCO Avbl on freq 121.725 (MINNEAPOLIS CENTER AND FLIGHT SERVICES).**CLEARANCE DELIVERY PHONE:** For CD if una to ctc on FSS freq, ctc Minneapolis ARTCC at 651-463-5588.**RADIO AIDS TO NAVIGATION:** NOTAM FILE ROX.**ROSEAU (L) (L) VOR/DME** 108.8 ROX Chan 25 N48°51.29' W95°41.70' 064° 14.7 NM to fld. 1055/5E.

VOR/DME unusable:

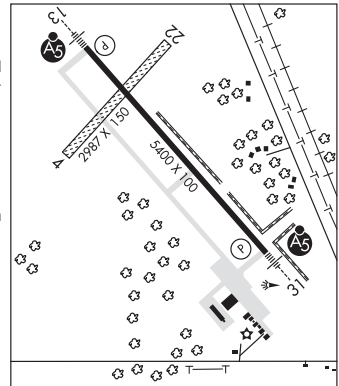
Byd 25 NM blo 2,900'

DME unusable:

080°-115° byd 20 NM blo 3,000'

ROADD NDB (LOMW) 360 SW N48°51.77' W95°14.51' 314° 6.3 NM to fld. 1084/4E. NOTAM FILE RRT.

ILS/DME 110.1 I-SWE Chan 38 Rwy 31. Class IT. LOM ROADD NDB.

**WASECA MUNI** (ACQ)(KACQ) 2 W UTC-6(-5DT) N44°04.41' W93°33.18'

OMAHA

1127 B NOTAM FILE ACQ

L-12J

RWY 15-33: H3399X75 (ASPH) S-12.5 MIRL

IAP

RWY 15: VASI(V2L)—GA 2.5° TCH 25'.**RWY 33:** VASI(V2L)—GA 2.5° TCH 29'.**SERVICE:** S4 FUEL 100LL, MOGAS LGT MIRL Rwy 15-33 preset on low ints SS-SR; increase ints and ACTIVATE VASI Rwy 15 and Rwy 33; MIRL Rwy 15-33—CTAF.**AIRPORT REMARKS:** Attended Mon-Fri 1400-0000Z. For svc after hrs call 507-351-1094. Parachute Jumping. Ultralight ttc on and invof arpt.

NOTE: See Special Notices—Aerobatic Practice Areas.

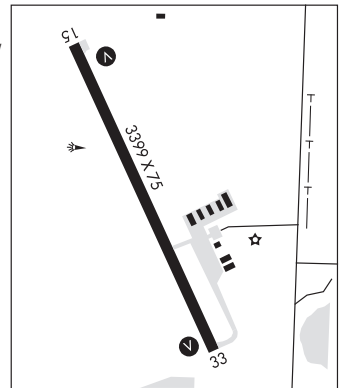
AIRPORT MANAGER: 507-835-5920**WEATHER DATA SOURCES:** AWOS-3 118.425 (507) 835-3657.**COMMUNICATIONS:** CTAF/UNICOM 122.8

Ⓜ MINNEAPOLIS CENTER APP/DEP CON 135.0

CLEARANCE DELIVERY PHONE: For CD ctc Minneapolis ARTCC at 651-463-5588.**RADIO AIDS TO NAVIGATION:** NOTAM FILE PNM.**HALFWAY (T) (T) VOR/DME** 111.2 FOW Chan 49 N44°12.27'

W93°22.23' 223° 11.1 NM to fld. 1099/2E. VOR/DME

unmonitored.

**WASKISH MUNI** (VWU)(KVVU) 1 S UTC-6(-5DT) N48°08.91' W94°31.01'

TWIN CITIES

1185 NOTAM FILE VWU

RWY 02-20: 2992X140 (TURF)**AIRPORT REMARKS:** Unattended.**AIRPORT MANAGER:** (218) 766-1523**WEATHER DATA SOURCES:** AWOS-3 124.175 (218) 647-8415.**COMMUNICATIONS:** CTAF 122.9**CLEARANCE DELIVERY PHONE:** For CD ctc Minneapolis ARTCC at 651-463-5588.