

**BROADWAY** N40°47.91' W74°49.31' NOTAM FILE MIV.  
(L) (L) **VORW/DME** 114.2 BWZ Chan 89 157° 12.4 NM to Somerset. 1050/11W.

NEW YORK  
H-101, L-33A, 34H

VOR portion unusable:  
125°-180° byd 15 NM blo 5,000'  
125°-240° blo 3,000'  
180°-210° byd 15 NM  
210°-235° byd 15 NM blo 5,000'  
DME portion unusable:  
297°-307° byd 20 NM blo 6,000'  
297°-307° byd 32 NM blo 8,000'

**BUCKS** (See BRIDGETON on page 159)

## CALDWELL

**ESSEX CO** (CDW)(KCDW) 2 N UTC-5(-4DT) N40°52.51' W74°16.88'

NEW YORK  
COPTER  
L-33A, 34H  
IAP, AD

172 B TPA—See Remarks NOTAM FILE CDW

**RWY 04-22:** H4552X80 (ASPH-GRVD) S-30 HIRL

**RWY 04:** Thld dspcd 375'. Tree.

**RWY 22:** REIL. PAPI(P4R)—GA 3.0° TCH 42'. Thld dspcd 135'. Trees.  
Rgt tfc.

**RWY 10-28:** H3719X75 (ASPH) S-30 MIRL

**RWY 10:** Thld dspcd 344'. Tree.

**RWY 28:** Thld dspcd 550'. Tree. Rgt tfc.

**SERVICE:** S4 **FUEL** 100LL, **JET A** **OX 4** **LGT** When twr clsd MIRL Rwy 10-28 and HIRL Rwy 04-22 preset med ints. REIL Rwy 22 avbl high ints only. **ACTIVATE** HIRL Rwy 04-22 and REIL Rwy 22—CTAF. Rwy 22 PAPI unusable byd 5° right of centerline due to obstruction.

**NOISE:** Non-standard traffic patterns for Rwy 04 prohibited due to noise sensitive area southwest of the airport.

**AIRPORT REMARKS:** Attended 1200-0400Z†. Local ops suspended Mon-Sat 0400-1200Z† and 0400Z† Sat-1500Z† Sun. Deer and birds on and invof arpt. Turbo jet acct Indg and tkofs restricted to Rwy 04-22. Touch and go lds ltd to based acct only. TPA for large and turbojet acct 1699(1527), light acct 1199(1027). Fixed wing VFR acct dep: Rwy 04-fly rwy hdg for 1 mi, then turn crosswind if remaining in the tfc pat. If departing the tfc pat, cont on rwy hdg til reaching tfc pat alt. Fixed wing VFR acct dep: Rwy 10-fly hdg 080 deg at rwy dep end. Upon reaching 900 ft MSL, turn crosswind if remaining in the tfc pat; if departing the tfc pat, cont on hdg 080 deg til reaching tfc pat alt. Fixed wing VFR acct dep: Rwy 22 fly rwy hdg til reaching 900 ft MSL then turn crosswind if remaining in the tfc pat. If departing the tfc pat, cont on rwy hdg til reaching tfc pat alt. Fixed wing VFR acct dep: Rwy 28 fly rwy hdg for 1 mi then turn crosswind if remaining in the tfc pat. If departing the tfc pat, cont on rwy hdg til reaching tfc pat alt.

Rotocraft: If psbl, cross the arpt bdry at or abv 700 ft MSL. Pilots be alert—the Morristown ILS and GPS Rwy 23 approaches transit Essex Co Arpt Class D asp. Tfc passes two mi west of the arpt descending through 2000 ft MSL. Eng run-ups on Twy N at AER 28 shd be conducted to lmt efct to acct parked on RN Ramp. Ldg fee for all tran acct.

**AIRPORT MANAGER:** 973-227-4567

**WEATHER DATA SOURCES:** ASOS 135.5 (973) 575-4417.

**COMMUNICATIONS:** CTAF 119.8 ATIS 135.5 UNICOM 122.95

Ⓡ NEW YORK APP CON 127.6

CALDWELL TOWER 119.8 (1200-0400Z†) GND CON 121.9 CLNC DEL 121.1

Ⓡ NEW YORK DEP CON 119.2

**CLEARANCE DELIVERY PHONE:** For CD when ATCT is clsd ctc New York Apch at 800-645-3206

**AIRSPACE:** CLASS D svc 1200-0400Z†; other times CLASS G.

**RADIO AIDS TO NAVIGATION:** NOTAM FILE TEB.

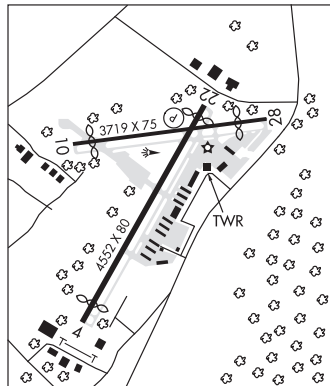
**TEB** (T) (T) **VORW/DME** 108.4 TEB Chan 21 N40°50.92' W74°03.73' 290° 10.1 NM to fld. 3/11W.

DME unusable:  
060°-080° byd 22 NM blo 2,500'  
081°-120° blo 4,000'  
121°-180° blo 3,000'  
236°-246°

VOR unusable:  
081°-120° blo 4,000'  
121°-180° blo 3,000'  
236°-246°

**LOC** 109.35 I-CDW Rwy 22.

**COMM/NAV/WEATHER REMARKS:** Emerg frequency 121.5 not avbl at twr.



**CAMDEN CO** (See BERLIN on page 159)