

WAAS CH 97415 W35A	APP CRS 347°	Rwy Idg 5219 TDZE 196 Apt Elev 196
--	------------------------	---

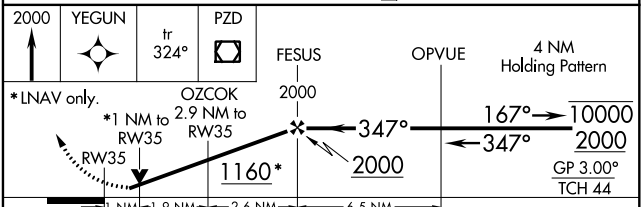
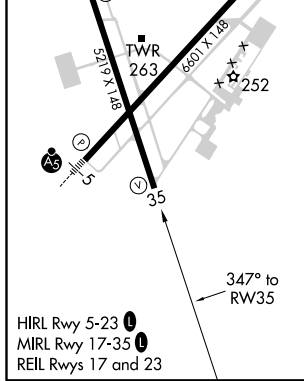
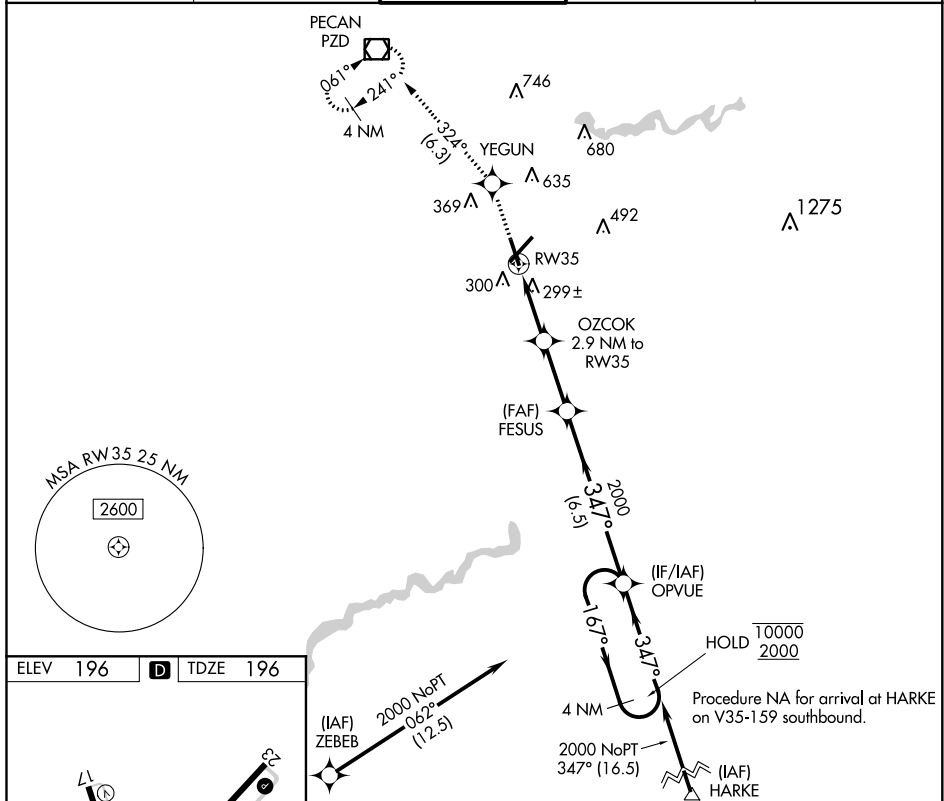
RNAV (GPS) RWY 35

SOUTHWEST GEORGIA RGNL (ABY)

RNP APCH.
 ▼ For uncompensated Baro-VNAV systems, LNAV/VNAV NA below -7°C or above 54°C. Rwy 35 helicopter visibility reduction below 3/4 SM NA.

MISSED APPROACH: Climb to 2000 direct YEGUN and on track 324° to PZD VOR/DME and hold.

ATIS 133.05	JACKSONVILLE CENTER 125.75 226.8	ALBANY TOWER * 120.25 (CTAF) 0336.4	GND CON 121.9 348.6	UNICOM 122.95
-----------------------	--	---	-------------------------------	-------------------------



2000	YEGUN	tr 324°	PZD	FESUS	OPVUE	4 NM Holding Pattern
*LNAV only.		*1 NM to RW35		OZCOK 2.9 NM to RW35	1160*	2000
1 NM		1.9 NM	2.6 NM	6.5 NM		
CATEGORY	A	B	C	D		
LPV DA	495-1 299 (300-1)					
LNAV/VNAV DA	475-1 279 (300-1)					
LNAV MDA	560-1 364 (400-1)					
CIRCLING	640-1	660-1	940-2 1/4	940-2 1/2		
	444 (500-1)	464 (500-1)	744 (800-2 1/4)	744 (800-2 1/2)		

SE-4, 21 APR 2022 to 19 MAY 2022

SE-4, 21 APR 2022 to 19 MAY 2022