

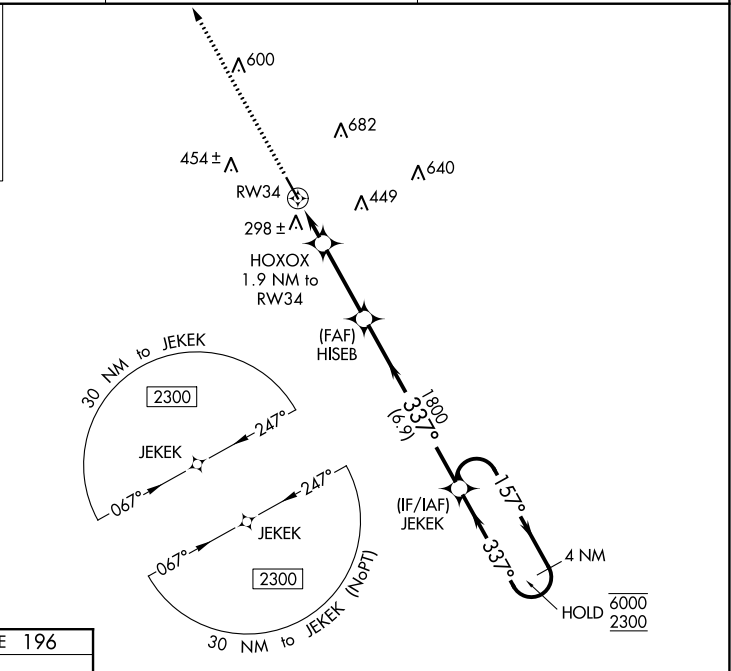
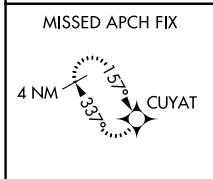
WAAS CH <b>70635</b> <b>W34A</b>	APP CRS <b>337°</b>	Rwy Idg TDZE Apt Elev	<b>5000</b> <b>196</b> <b>200</b>
--	------------------------	-----------------------------	---

# RNAV (GPS) RWY 34

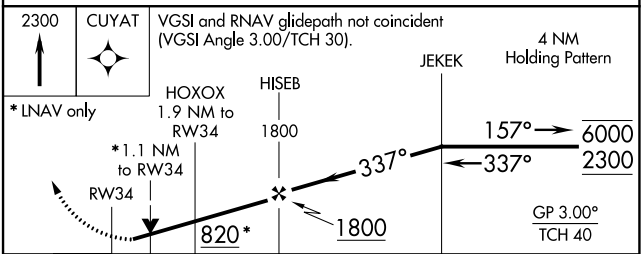
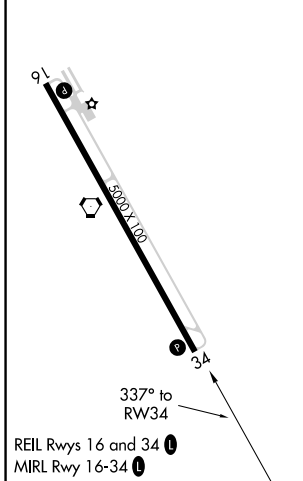
BACON COUNTY (AMG)

RNP APCH.	MISSED APPROACH: Climb to 2300 direct CUYAT and hold.
<p>▼ Rwy 34 helicopter visibility reduction below ¼ SM NA. ▲ For uncompensated Baro-VNAV systems, LNAV/VNAV NA below -4°C or above 54°C.</p>	

ASOS <b>118.325</b>	JACKSONVILLE CENTER <b>127.575 269.025</b>	UNICOM <b>122.7 (CTAF) 1</b>
------------------------	---	---------------------------------



ELEV 200	TDZE 196
----------	----------



CATEGORY	A	B	C	D
LPV DA		452-¾	256 (300-¾)	
LNAV/VNAV DA		459-⅞	263 (300-⅞)	
LNAV MDA		560-1	364 (400-1)	
<b>C</b> CIRCLING	720-1	520 (600-1)	1000-2¼ 800 (800-2¼)	1000-2½ 800 (800-2½)