

NDB EMR <b>385</b>	APP CRS <b>104°</b>	Rwy Idg TDZE Apt Elev	<b>3407</b> <b>422</b> <b>422</b>
-----------------------	------------------------	-----------------------------	---

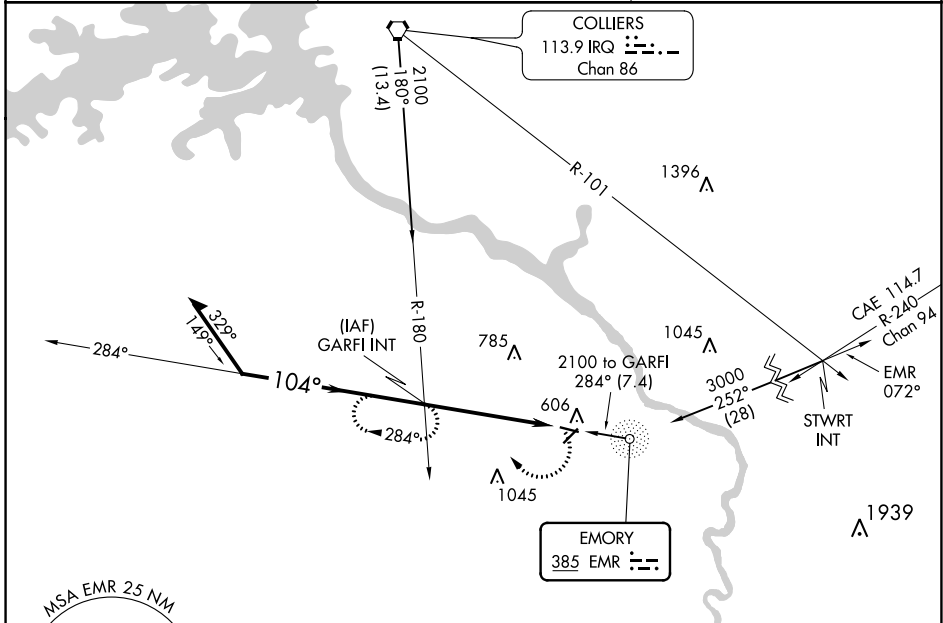
# NDB RWY 11

DANIEL FLD (DNL)

**⚠** Helicopter visibility reduction below 1 SM NA. When local altimeter setting not received, use Augusta Rgnl at Bush Fld altimeter setting and increase all MDA 60 feet and increase S-11 and Circling Cats C and D visibility ¼ mile. Procedure NA at night.

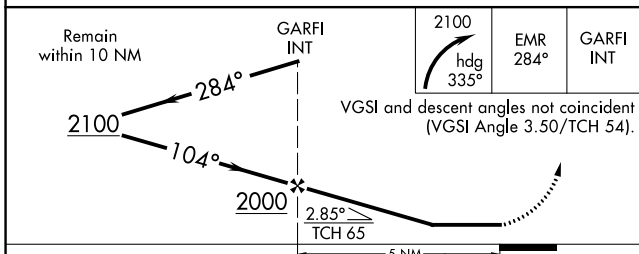
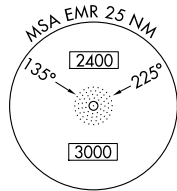
**⚠** MISSED APPROACH: Climbing right turn to 2100 heading 335° and EMR 284° bearing to GARFI INT and hold.

ASOS <b>135.275</b>	AUGUSTA APP CON * <b>126.8 270.3</b>	UNICOM <b>123.05 (CTAF) 0</b>
------------------------	---	----------------------------------

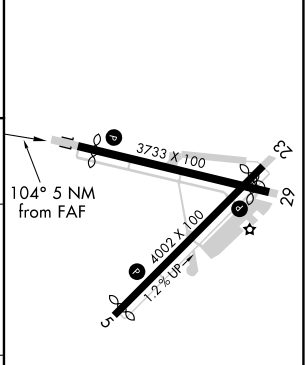


SE-4, 21 APR 2022 to 19 MAY 2022

SE-4, 21 APR 2022 to 19 MAY 2022



ELEV 422	<b>D</b> TDZE 422
----------	-------------------



CATEGORY	A	B	C	D
S-11	1040-1 618 (700-1)		1040-1¾ 618 (700-1¾)	1040-2 618 (700-2)
<b>C</b> CIRCLING	1040-1 618 (700-1)		1400-3 978 (1000-3)	

REIL Rwy 11 <b>0</b>	
MRL Rws 5-23 and 11-29 <b>0</b>	
FAF to MAP 5 NM	
Knots	60 90 120 150 180
Min:Sec	5:00 3:20 2:30 2:00 1:40