

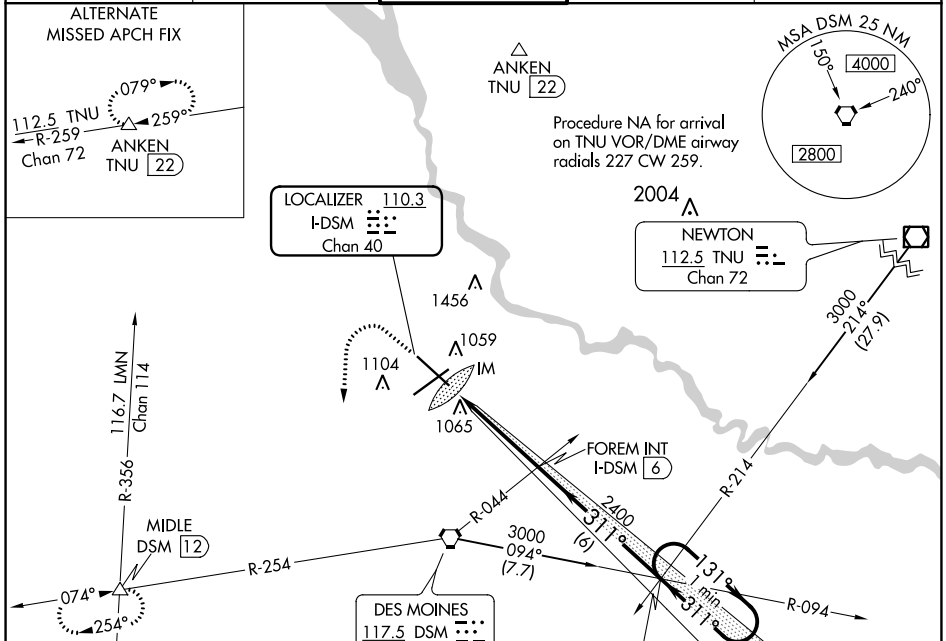
LOC/DME I-DSM 110.3 Chan 40	APP CRS 311°	Rwy ldg TDZE Apt Elev	9001 958 958
--	------------------------	-----------------------------	---

ILS RWY 31 (SA CAT I)

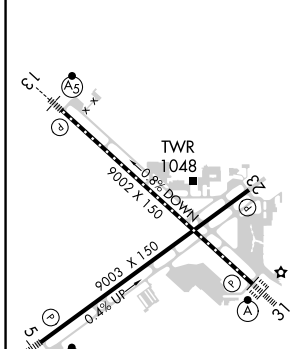
DES MOINES INTL (DSM)

Requires specific OPSPEC, MSPEC, or LOA approval and use of HUD to DH.	ALSF-2 	MISSED APPROACH: Climb to 1600 then climbing left turn to 3000 on heading 180° and on DSM VORTAC R-254 to MIDDLE INT/12 DME and hold.

ATIS 119.55	DES MOINES APP CON 123.9 307.15	DES MOINES TOWER 118.3 257.8	GND CON 121.9 348.6	CLNC DEL 134.15 317.55
-----------------------	---	--	-------------------------------	----------------------------------



ELEV 958	D	TDZE 958
----------	----------	----------

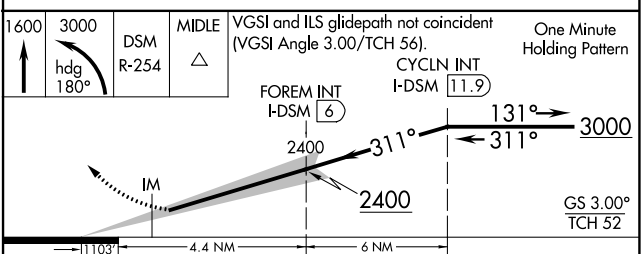


Procedure NA for arrival on DSM VORTAC airway radials 042 CW 141.

DES MOINES 117.5 DSM Chan 122

FOREM INT I-DSM 6

(IF/IAF) CYCLN INT I-DSM 11.9



CATEGORY	A	B	C	D
S-ILS 31	RA 159/14 150 DA 1108			

SA CATEGORY I ILS-SPECIAL AIRCREW & AIRCRAFT CERTIFICATION REQUIRED

NC-3, 21 APR 2022 to 19 MAY 2022

NC-3, 21 APR 2022 to 19 MAY 2022