

WAAS CH 97541 W23A	APP CRS 233°	Rwy Idg TDZE Apt Elev	9004 939 958
--	------------------------	-----------------------------	---

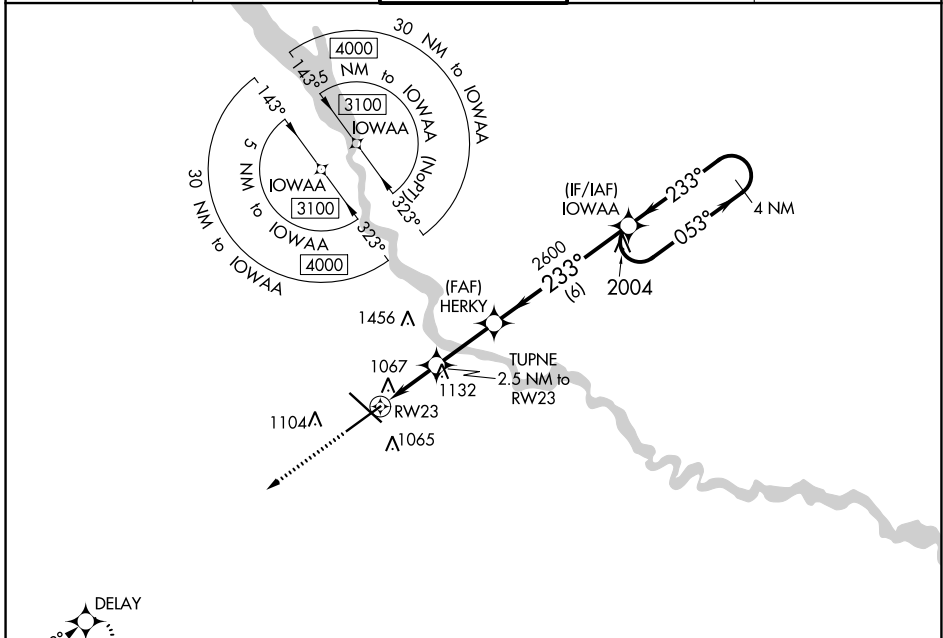
RNAV (GPS) RWY 23

DES MOINES INTL (DSM)

▼ For uncompensated Baro-VNAV systems, LNAV/VNAV NA below -19°C (-2°F) or above 54°C (130°F). Rwy 23 helicopter visibility reduction below ¾ SM NA. DME/DME RNP-0.3 NA.

▲ MISSED APPROACH: Climb to 3000 direct DELAY and hold.

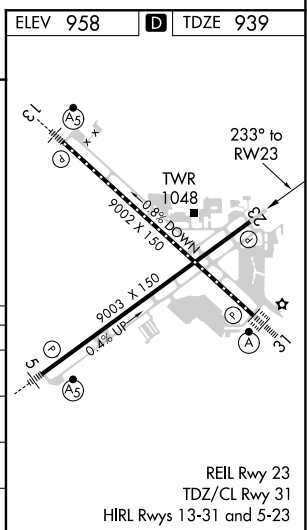
ATIS 119.55	DES MOINES APP CON 123.9 307.15	DES MOINES TOWER 118.3 257.8	GND CON 121.9 348.6	CLNC DEL 134.15 317.55
-----------------------	---	--	-------------------------------	----------------------------------



NC-3, 21 APR 2022 to 19 MAY 2022

NC-3, 21 APR 2022 to 19 MAY 2022

3000 DELAY	↑	☀	IOWAA 4 NM Holding Pattern	
*LNAV only	TUPNE 2.5 NM to RW23	HERKY 2600	3100	
1 NM to RW23	1780	2600	GP 3.00° TCH 56	
1 NM	1.5 NM	2.6 NM	6 NM	
CATEGORY	A	B	C	D
LPV DA	1262-1 323 (400-1)			
LNAV/VNAV DA	1242-7/8 303 (300-7/8)			
LNAV MDA	1320-1 381 (400-1)	1320-1 1/8 381 (400-1 1/8)		
C CIRCLING	1420-1 462 (500-1)	1600-1 3/4 642 (700-1 3/4)	1760-2 1/2 802 (900-2 1/2)	



REIL Rwy 23
TDZ/CL Rwy 31
HIRL Rwys 13-31 and 5-23