

LOC I-BQK 108.5	APP CRS 069°	Rwy Idg 8001
		TDZE 26
		Apt Elev 26

ILS or LOC RWY 7

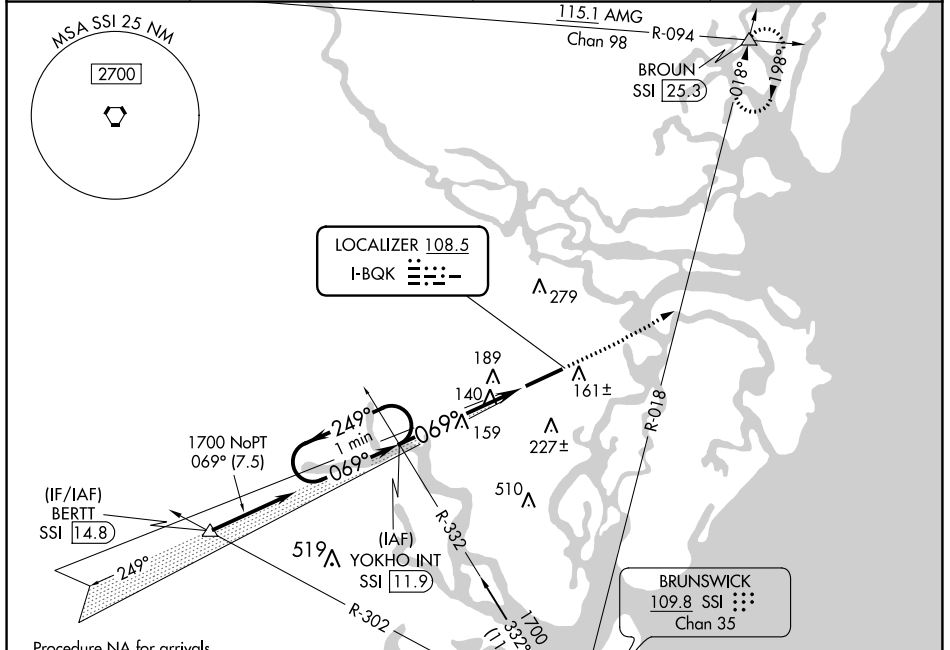
BRUNSWICK GOLDEN ISLES (BQK)

DME required.

⚠ When local altimeter setting not received, use St Simons Island altimeter setting: increase DA to 245 feet; increase all MDAs 20 feet and visibility S-LOC 7 Cat C ½ SM. For inop ALS, increase S-LOC 7 Cat D visibility to 1½ SM. For inop ALS when using St Simons Island altimeter setting, increase S-LOC 7 Cat C/D visibility to 1½ SM.

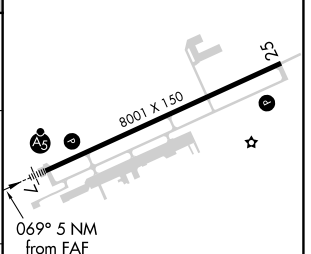
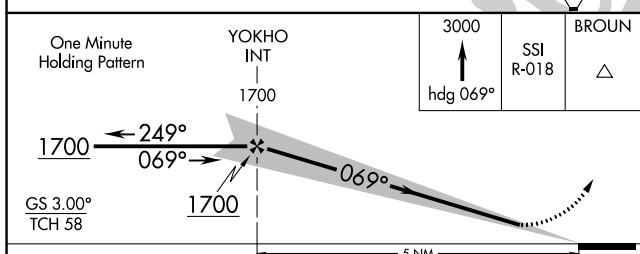
MALSR MISSED APPROACH: Climb to 3000 on heading 069° and on SSI VORTAC R-018 to BROUN/SSI 25.3 DME and hold.

AWOS-3 124.175	JACKSONVILLE CENTER 126.75 277.4	CLNC DEL 126.75 277.4	UNICOM 123.0 (CTAF) 0
--------------------------	--	---------------------------------	---------------------------------



Procedure NA for arrivals at BERTT on V362 northwest bound.

ELEV 26	TDZE 26
---------	---------



CATEGORY	A	B	C	D
S-ILS 7		226-½	200 (200-½)	
S-LOC 7	420-½	394 (400-½)	420-¾ 394 (400-¾)	420-¾ 394 (400-¾)
CIRCLING	540-1	514 (600-1)	560-1½ 534 (600-1½)	800-2½ 774 (800-2½)

REIL Rwy 25 HIRL Rwy 7-25

FAF to MAP 5 NM

Knots	60	90	120	150	180
Min:Sec	5:00	3:20	2:30	2:00	1:40

SE-4, 21 APR 2022 to 19 MAY 2022

SE-4, 21 APR 2022 to 19 MAY 2022