

LOC I-GMU 109.7	APP CRS 006°	Rwy Idg TDZE Apt Elev	5393 1015 1048
---------------------------	------------------------	-----------------------------	---

ILS Y or LOC Y RWY 1 GREENVILLE DOWNTOWN (GMU)

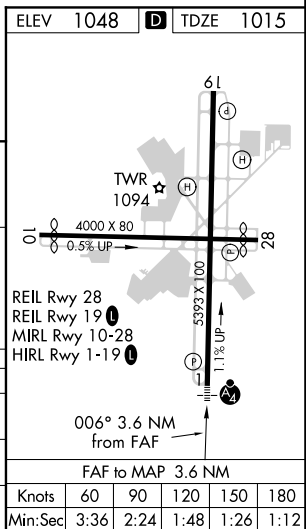
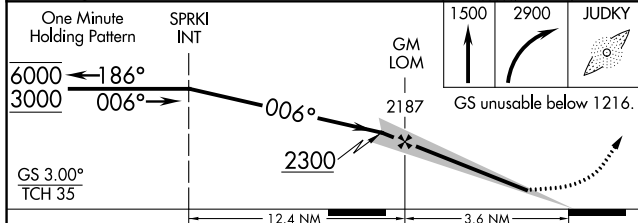
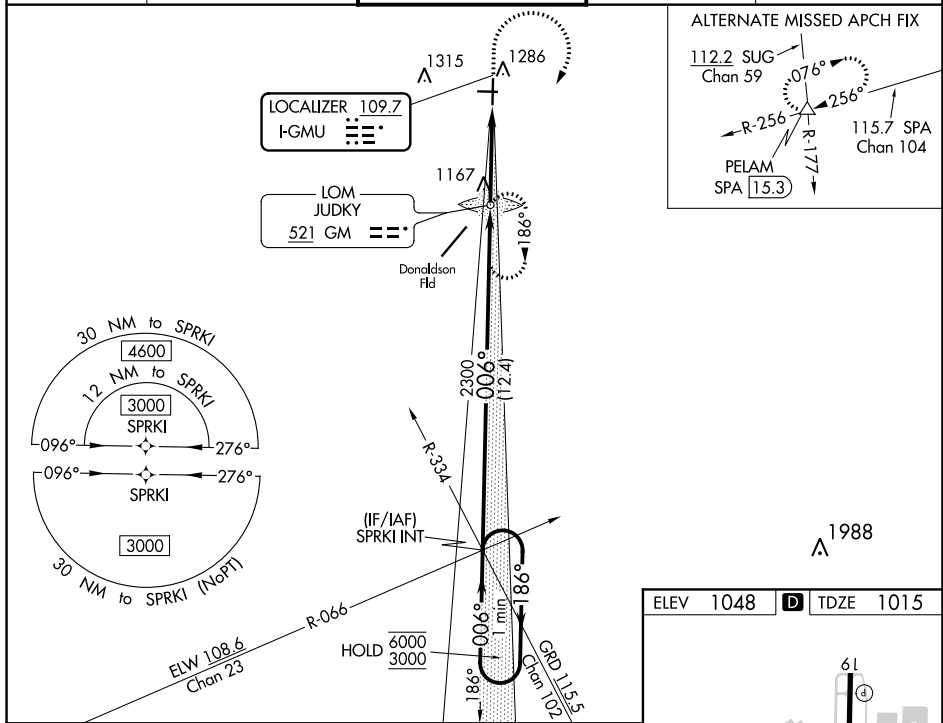
RNAV-1 GPS required for procedure entry.
ADF required.

⚠ When local altimeter setting not received, use Greer altimeter setting and increase S-ILS 1 DA to 1245, increase all MDAs 40 feet and visibility S-LOC 1 Cat C and D 1/2 SM and Circling Cat C visibility 1/4 SM. Inop table does not apply to S-ILS 1.

MALS

MISSED APPROACH: Climb to 1500 then climbing right turn to 2900 direct JUDKY LOM and hold, continue climb-in-hold to 2900.

ATIS ★ 127.075	GREER APP CON ★ 118.8 270.275	GREENVILLE TOWER ★ 119.9 (CTAF) 257.7	GND CON 121.25	UNICOM 122.95
---------------------------------	--	--	---------------------------------	--------------------------------



CATEGORY	A	B	C	D
S-ILS 1		1216-3/4	201 (200-3/4)	
S-LOC 1	1540-3/4	525 (500-3/4)	1540-1 1/4	525 (500-1 1/4)
C CIRCLING	1620-1	572 (600-1)	1780-2 732 (800-2)	1860-2 3/4 812 (900-2 3/4)