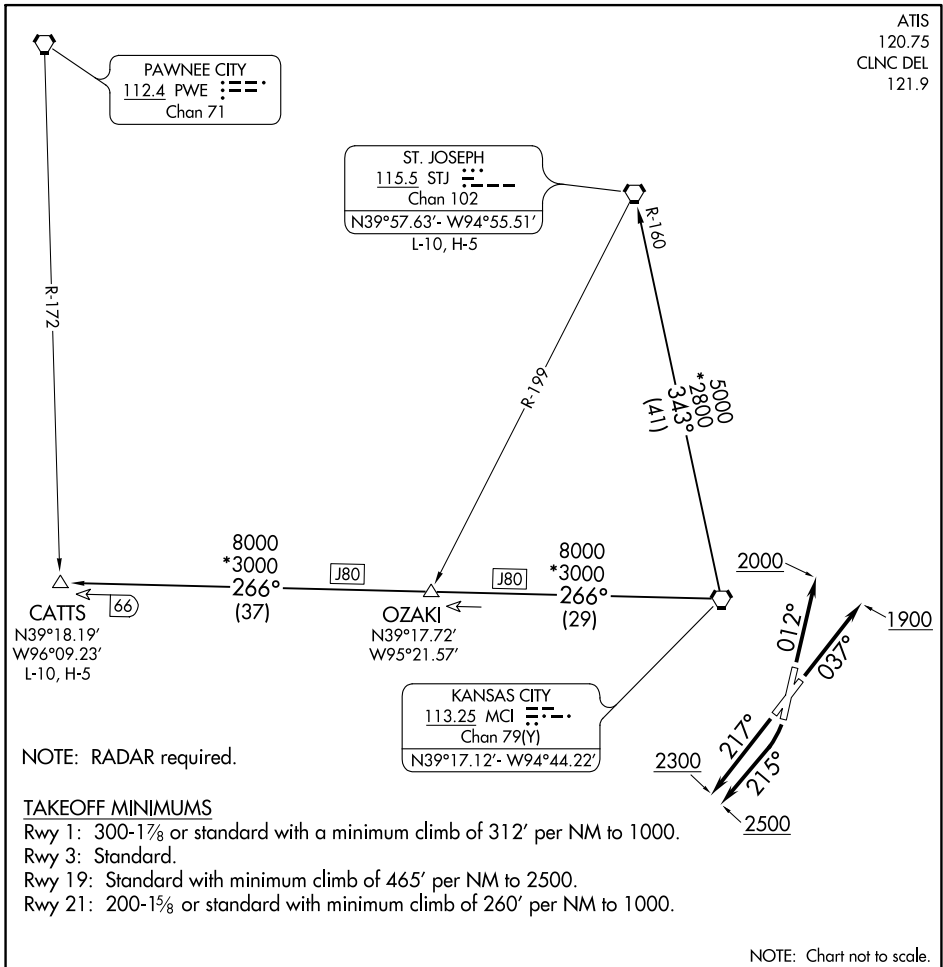


CHIEF SEVEN DEPARTURE

AL-213 (FAA)

CHARLES B WHEELER DOWNTOWN (MCK)
KANSAS CITY, MISSOURI

ATIS
120.75
CLNC DEL
121.9



NC-3, 21 APR 2022 to 19 MAY 2022

NC-3, 21 APR 2022 to 19 MAY 2022

DEPARTURE ROUTE DESCRIPTION

TAKEOFF RUNWAY 1: Climb heading 012° to 2000, thence. . .

TAKEOFF RUNWAY 3: Climb heading 037° to 1900, thence. . .

TAKEOFF RUNWAY 19: Climbing right turn heading 215° to 2500, thence. . .

TAKEOFF RUNWAY 21: Climb heading 217° to 2300, thence. . .

. . . climb on assigned heading for RADAR vectors to appropriate route. Expect filed altitude 10 minutes after departure.

CATTS TRANSITION (CHIEF7.CATTS): From over MCI VORTAC on MCI R-266 to CATTS INT.

ST. JOSEPH TRANSITION (CHIEF7.STJ): From over MCI VORTAC on MCI R-343 and STJ R-160 to STJ VORTAC.