

LOC/DME I-MKC <b>109.9</b> Chan 36	APP CRS <b>192°</b>	Rwy Idg <b>6525</b> TDZE <b>754</b> Apt Elev <b>757</b>
--	------------------------	---

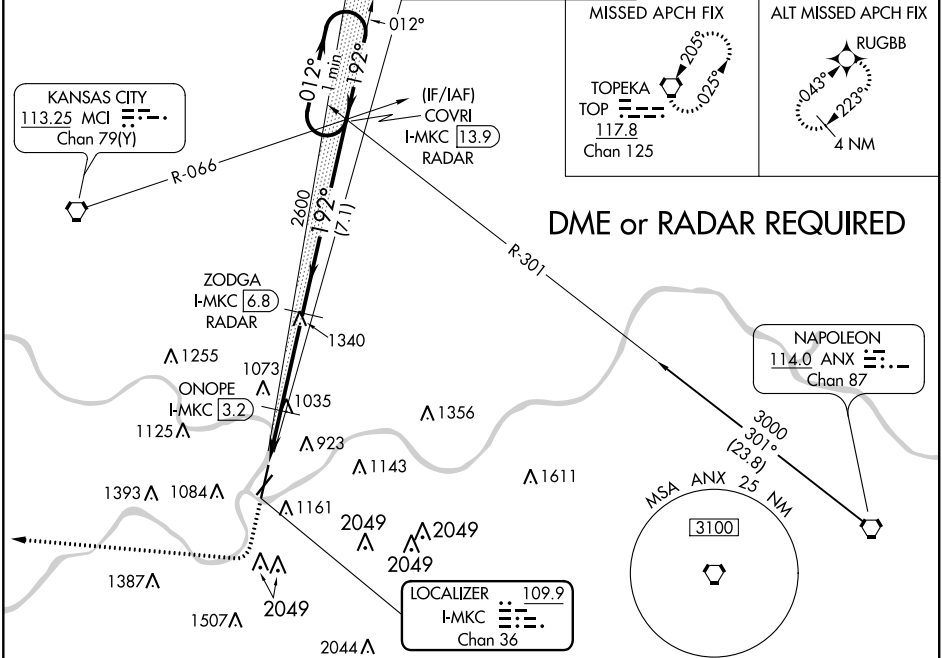
# ILS or LOC RWY 19

## CHARLES B WHEELER DOWNTOWN (MKC)

**⚠** Circling NA east of Rwy 1-19. DME or RADAR required. Circling NA to Rwy 21. For inoperative ALS, increase S-LOC 19 Cat C/D visibility to 2 SM. Circling NA for Cat D to Rwy 3. Rwy 19 helicopter visibility reduction below RVR 4000 NA.

**MALSF** MISSED APPROACH: Climb to 1300 then climbing right turn to 4000 direct TOP VORTAC and hold.

ATIS <b>120.75</b>	KANSAS CITY APP CON <b>118.4 307.35</b>	DOWNTOWN TOWER <b>133.3 233.7</b>	CLNC DEL <b>121.9</b>	GND CON <b>121.9</b>
-----------------------	--	--------------------------------------	--------------------------	-------------------------



NC-3, 21 APR 2022 to 19 MAY 2022

NC-3, 21 APR 2022 to 19 MAY 2022

ELEV 757	<b>D</b> TDZE 754	1300	4000	TOP	ZODGA I-MKC (6.8) RADAR	COVRI I-MKC (13.9) RADAR	One Minute Holding Pattern
		*LOC only I-MKC (1.1) *I-MKC (2.7)		ONOPE I-MKC (3.2) 2600 1460*	2600 192°	3000 012°	GS 3.00° TCH 46
CATEGORY	A	B	C	D			
S-ILS 19	1004/40 250 (300-¾)						
S-LOC 19	1460/40 706 (800-¾)	1460/55 706 (800-1)	1460-1⅞	706 (800-1½)			
<b>C</b> CIRCLING	1460-1	703 (800-1)	1460-2	703 (800-2)	1540-2½	783 (800-2½)	
DME MINIMUMS							
S-LOC 19	1300/40	546 (600-¾)	1300-1⅜	546 (600-1⅜)			
<b>C</b> CIRCLING	1380-1 623 (700-1)	1400-1 643 (700-1)	1460-2 703 (800-2)	1540-2½ 783 (800-2½)			