

WAAS CH 40327 W21A	APP CRS 226°	Rwy Idg TDZE 744 Apt Elev 757
--	------------------------	---

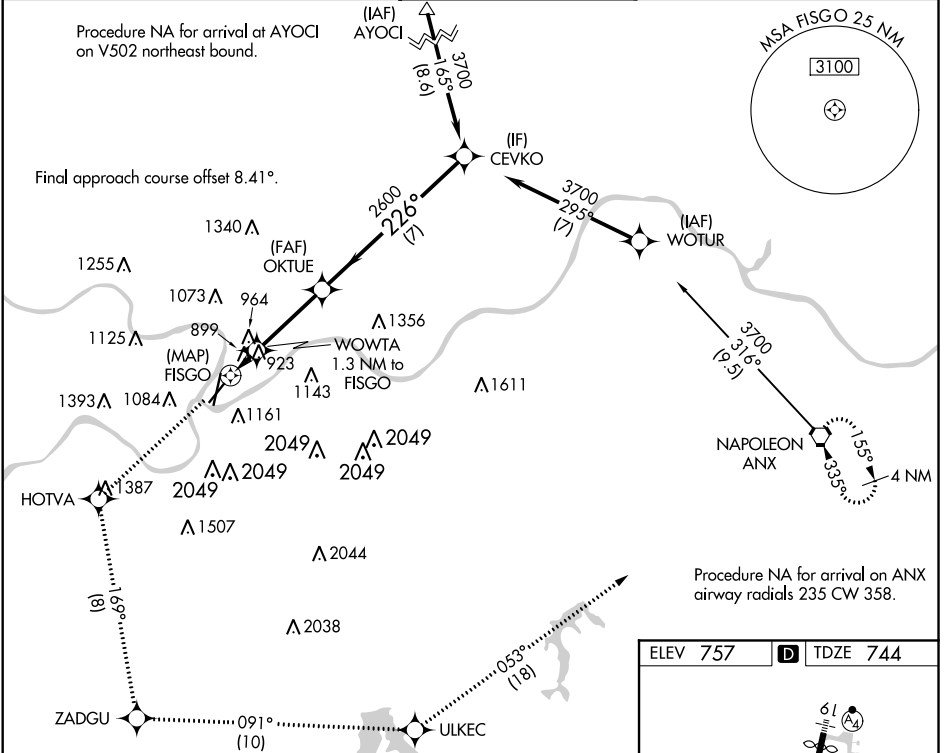
RNAV (GPS) RWY 21

CHARLES B WHEELER DOWNTOWN (MKC)

⚠ DME/DME RNP-0.3 NA. Circling Cat D NA Rwy 3. Rwy 21 helicopter visibility reduction below 1 SM NA. Circling to Rwy 21 NA. Straight-in Rwy 21 at night, operational VGSI required, remain at or above VGSI glidepath until threshold. Circling NA east of Rwy 1/19.

MISSED APPROACH: Climb to 3700 direct HOTVA and on track 169° to ZADGU and on track 091° to ULKEC and on track 053° to ANX VORTAC and hold.

ATIS 120.75	KANSAS CITY APP CON 118.4 307.35	DOWNTOWN TOWER 133.3 233.7	CLNC DEL 121.9	GND CON 121.9
-----------------------	--	--------------------------------------	--------------------------	-------------------------



NC-3, 21 APR 2022 to 19 MAY 2022

NC-3, 21 APR 2022 to 19 MAY 2022

3700	HOTVA	tr 169°	ZADGU	tr 091°	ULKEC	tr 053°	ANX	CEVKO
WOWTA 1.3 NM to FISGO		OKTUE		TCH 57		226°		3700
FISGO		1440		2600		2600		3700
0.5		1.3 NM		3.2 NM		7 NM		

ELEV 757	D TDZE 744
----------	-------------------

TWR 854

6827 X 150

5350 X 150

61, 21, 3, 1, 2, 3, 4, 5, 6, 7, 8, 9, 10, 11, 12, 13, 14, 15, 16, 17, 18, 19, 20, 21, 22, 23, 24, 25, 26, 27, 28, 29, 30, 31, 32, 33, 34, 35, 36, 37, 38, 39, 40, 41, 42, 43, 44, 45, 46, 47, 48, 49, 50, 51, 52, 53, 54, 55, 56, 57, 58, 59, 60, 61, 62, 63, 64, 65, 66, 67, 68, 69, 70, 71, 72, 73, 74, 75, 76, 77, 78, 79, 80, 81, 82, 83, 84, 85, 86, 87, 88, 89, 90, 91, 92, 93, 94, 95, 96, 97, 98, 99, 100.

REIL Rwy 1 and 21
HIRL Rwy 3-21 and 1-19