

WAAS CH <b>50112</b> <b>W03A</b>	APP CRS <b>037°</b>	Rwy Idg TDZE <b>744</b> Apt Elev <b>757</b>
--	------------------------	---

# RNAV (GPS) RWY 3

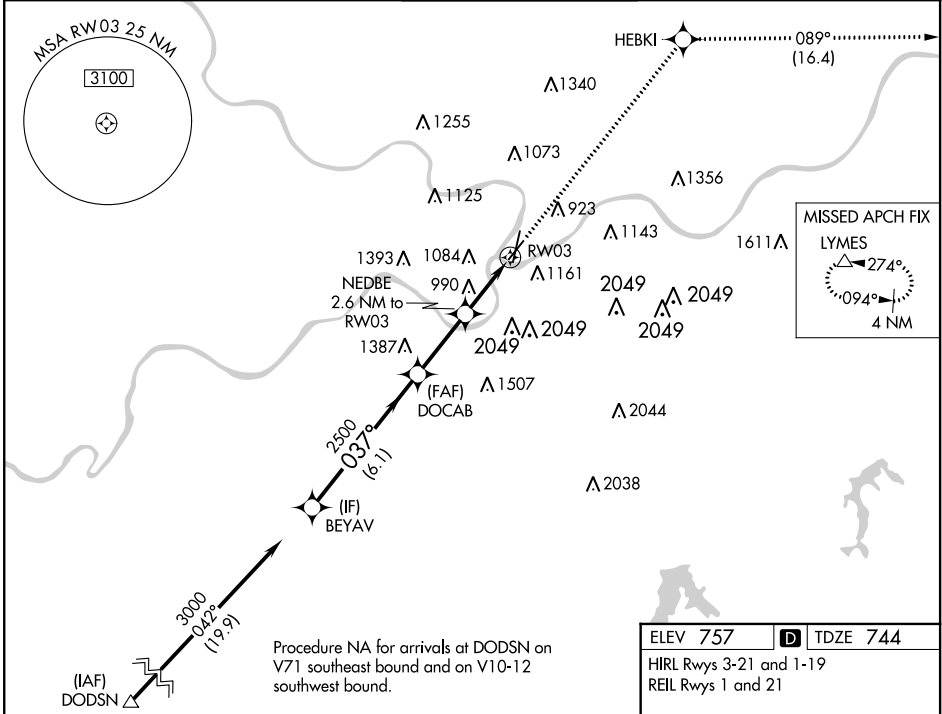
CHARLES B WHEELER DOWNTOWN (MKC)

RNP APCH-GPS.

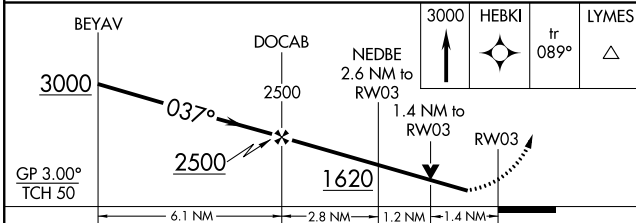
**⚠** Circling NA east of Rwy 1-19. Rwy 3 helicopter visibility reduction below RVR 4000 NA. For uncompensated Baro-VNAV systems, LNAV/VNAV NA below -6°C or above 54°C. Circling NA for Cat D to Rwy 3.

MISSED APPROACH: Climb to 3000 direct HEBKI and on track 089° to LYMES and hold.

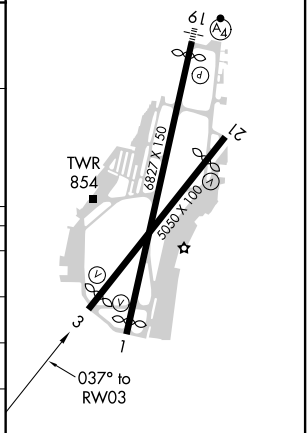
ATIS <b>120.75</b>	KANSAS CITY APP CON <b>118.4 307.35</b>	DOWNTOWN TOWER <b>133.3 233.7</b>	CLNC DEL <b>121.9</b>	GND CON <b>121.9</b>
-----------------------	--	--------------------------------------	--------------------------	-------------------------



ELEV 757	<b>D</b> TDZE 744
HIRL Rws 3-21 and 1-19 REIL Rws 1 and 21	



CATEGORY	A	B	C	D
LPV DA	999/40 255 (300-¾)			NA
LNAV/VNAV DA	1411-1⅞ 667 (700-1⅞)			NA
LNAV MDA	1240/55	496 (500-1)	1240-1⅞ 496 (500-1⅞)	NA
<b>C</b> CIRCLING	1380-1 623 (700-1)	1400-1 643 (700-1)	1460-2 703 (800-2)	1540-2½ 783 (800-2½)



NC-3, 21 APR 2022 to 19 MAY 2022

NC-3, 21 APR 2022 to 19 MAY 2022