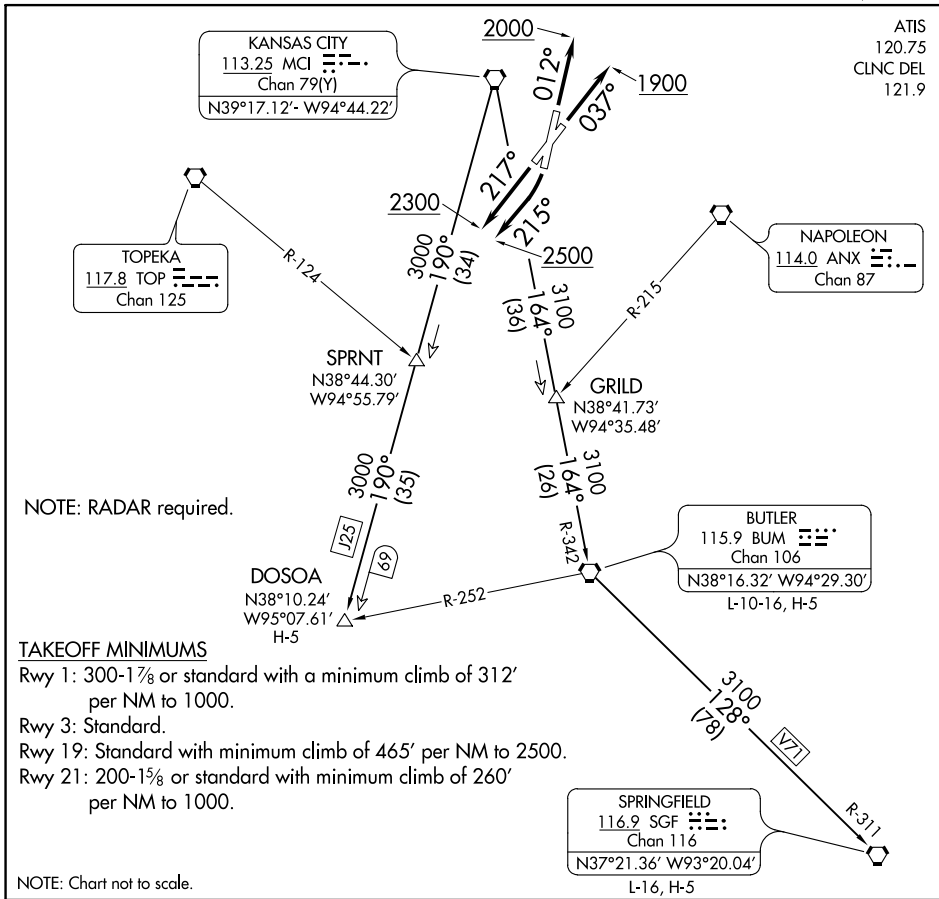


# RACER SEVEN DEPARTURE

AL-213 (FAA)

CHARLES B WHEELER DOWNTOWN (MKC)  
KANSAS CITY, MISSOURI

ATIS  
120.75  
CLNC DEL  
121.9



NC-3, 21 APR 2022 to 19 MAY 2022

NC-3, 21 APR 2022 to 19 MAY 2022

## DEPARTURE ROUTE DESCRIPTION

- TAKEOFF RUNWAY 1:** Climb heading 012° to 2000, thence. . .
- TAKEOFF RUNWAY 3:** Climb heading 037° to 1900, thence. . .
- TAKEOFF RUNWAY 19:** Climbing right turn heading 215° to 2500, thence. . .
- TAKEOFF RUNWAY 21:** Climb heading 217° to 2300, thence. . .

. . . climb on assigned heading for RADAR vectors to appropriate route. Expect filed altitude 10 minutes after departure.

**BUTLER TRANSITION (RACER7.BUM):** From over MCI VORTAC on MCI R-164 and BUM R-342 to BUM VORTAC.

**DOSOA TRANSITION (RACER7.DOSOA):** From over MCI VORTAC on MCI R-190 to DOSOA.

**SPRINGFIELD TRANSITION (RACER7.SGF):** From over MCI VORTAC on MCI R-164 and BUM R-342 to BUM VORTAC, then on BUM R-128 and SGF R-311 to SGF VORTAC.

# RACER SEVEN DEPARTURE