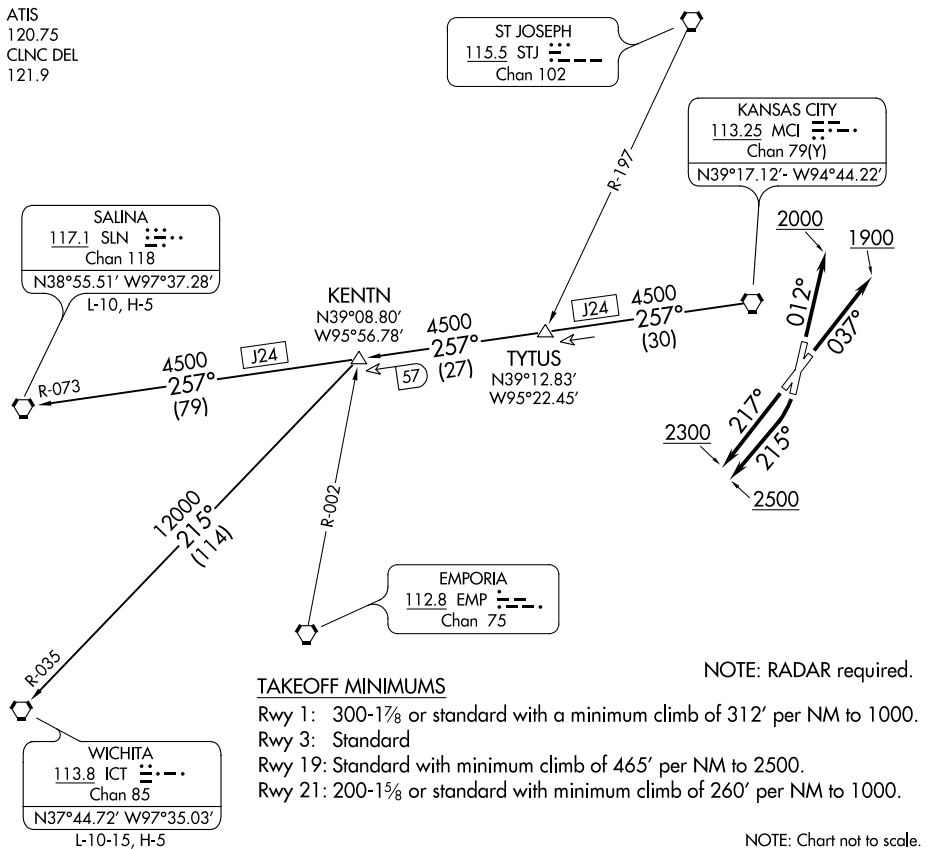


WILDCAT FIVE DEPARTURE

AL-213 (FAA)

CHARLES B WHEELER DOWNTOWN (MKC)
KANSAS CITY, MISSOURI



TAKEOFF MINIMUMS

- Rwy 1: 300-1 $\frac{1}{8}$ or standard with a minimum climb of 312' per NM to 1000.
- Rwy 3: Standard
- Rwy 19: Standard with minimum climb of 465' per NM to 2500.
- Rwy 21: 200-1 $\frac{1}{8}$ or standard with minimum climb of 260' per NM to 1000.

NOTE: RADAR required.

NOTE: Chart not to scale.

DEPARTURE ROUTE DESCRIPTION

- TAKEOFF RUNWAY 1:** Climb heading 012° to 2000, thence. . .
 - TAKEOFF RUNWAY 3:** Climb heading 037° to 1900, thence. . .
 - TAKEOFF RUNWAY 19:** Climbing right turn heading 215° to 2500, thence. . .
 - TAKEOFF RUNWAY 21:** Climb heading 217° to 2300, thence. . .
- . . . climb on assigned heading for RADAR vectors to appropriate route. Expect filed altitude 10 minutes after departure.

KENTN TRANSITION (WLDCT5.KENTN): From over MCI VORTAC on MCI R-257 to KENTN.

SALINA TRANSITION (WLDCT5.SLN): From over MCI VORTAC on MCI R-257 and SLN R-073 to SLN VORTAC.

WICHITA TRANSITION (WLDCT5.ICT): From over MCI VORTAC on MCI R-257 to KENTN, then on ICT R-035 to ICT VORTAC.

NC-3, 21 APR 2022 to 19 MAY 2022

NC-3, 21 APR 2022 to 19 MAY 2022