

WAAS CH <b>72809</b> <b>W18A</b>	APP CRS <b>180°</b>	Rwy Idg TDZE Apt Elev	<b>8536</b> <b>653</b> <b>656</b>
--	------------------------	-----------------------------	---


# RNAV (GPS) RWY 18

LA CROSSE RGNL (LSE)

RNP APCH.

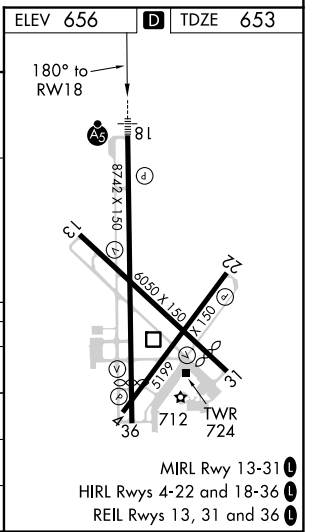
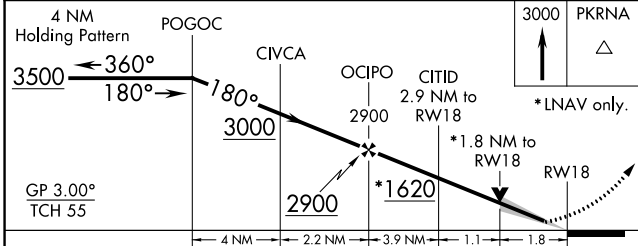
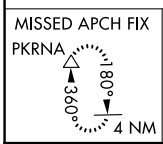
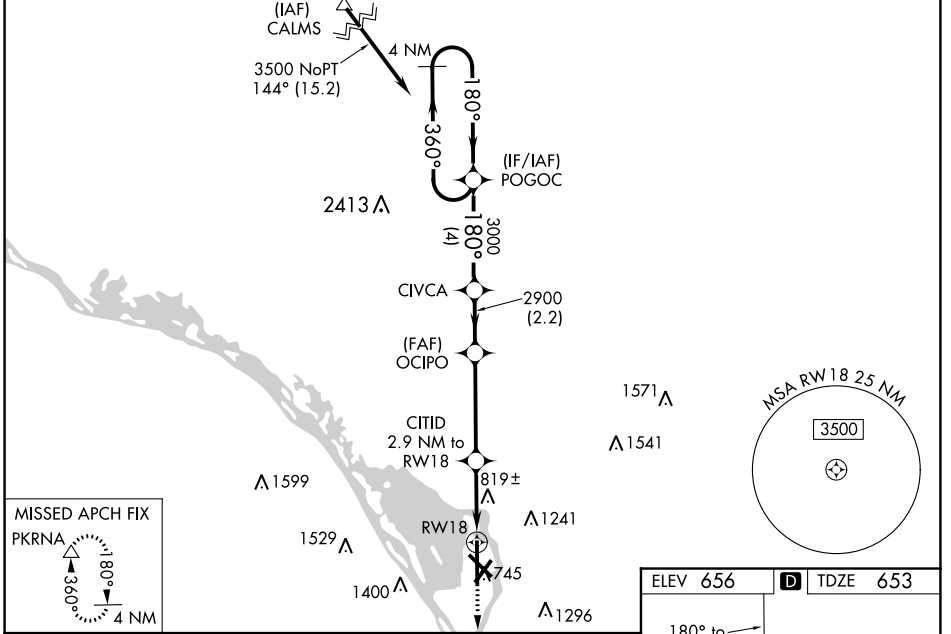
**⚠** For uncompensated Baro-VNAV systems, LNAV/VNAV NA below -27° C or above 54° C. When local altimeter setting not received, use Winona altimeter setting; increase LPV DA to 987 feet, LNAV/VNAV DA to 1257 feet and all MDA 60 feet.

**⚠** -22°C Increase LNAV/VNAV all Cats visibility ¼ SM and Circling Cat C visibility ¼ SM. For inoperative MALSR, increase LPV all Cats visibility ½ SM. LNAV minimums NA with Winona altimeter setting. Baro-VNAV and VDP NA when using Winona altimeter setting. Circling to Rwy 22 NA at night.

MALSR 

**MISSED APPROACH:**  
Climb to 3000 direct PKRNA and hold.

ATIS <b>124.95</b>	MINNEAPOLIS CENTER <b>128.6 363.0</b>	LA CROSSE TOWER * <b>118.45 (CTAF) 251.075</b>	GND CON <b>121.8</b>	UNICOM <b>122.95</b>
-----------------------	--	---	-------------------------	-------------------------



CATEGORY	A	B	C	D
LPV DA	925-½		272 (300-½)	
LNAV/VNAV DA	1204-½		551 (600-½)	
LNAV MDA	1360-½	707 (800-½)	1360-1½	1360-1¾
	704 (800-1)	804 (900-1)	707 (800-1½)	707 (800-1¾)
<b>C</b> CIRCLING	1360-1	1460-1	1760-3	1820-3
	704 (800-1)	804 (900-1)	1104 (1200-3)	1164 (1200-3)

EC-3, 21 APR 2022 to 19 MAY 2022

EC-3, 21 APR 2022 to 19 MAY 2022