

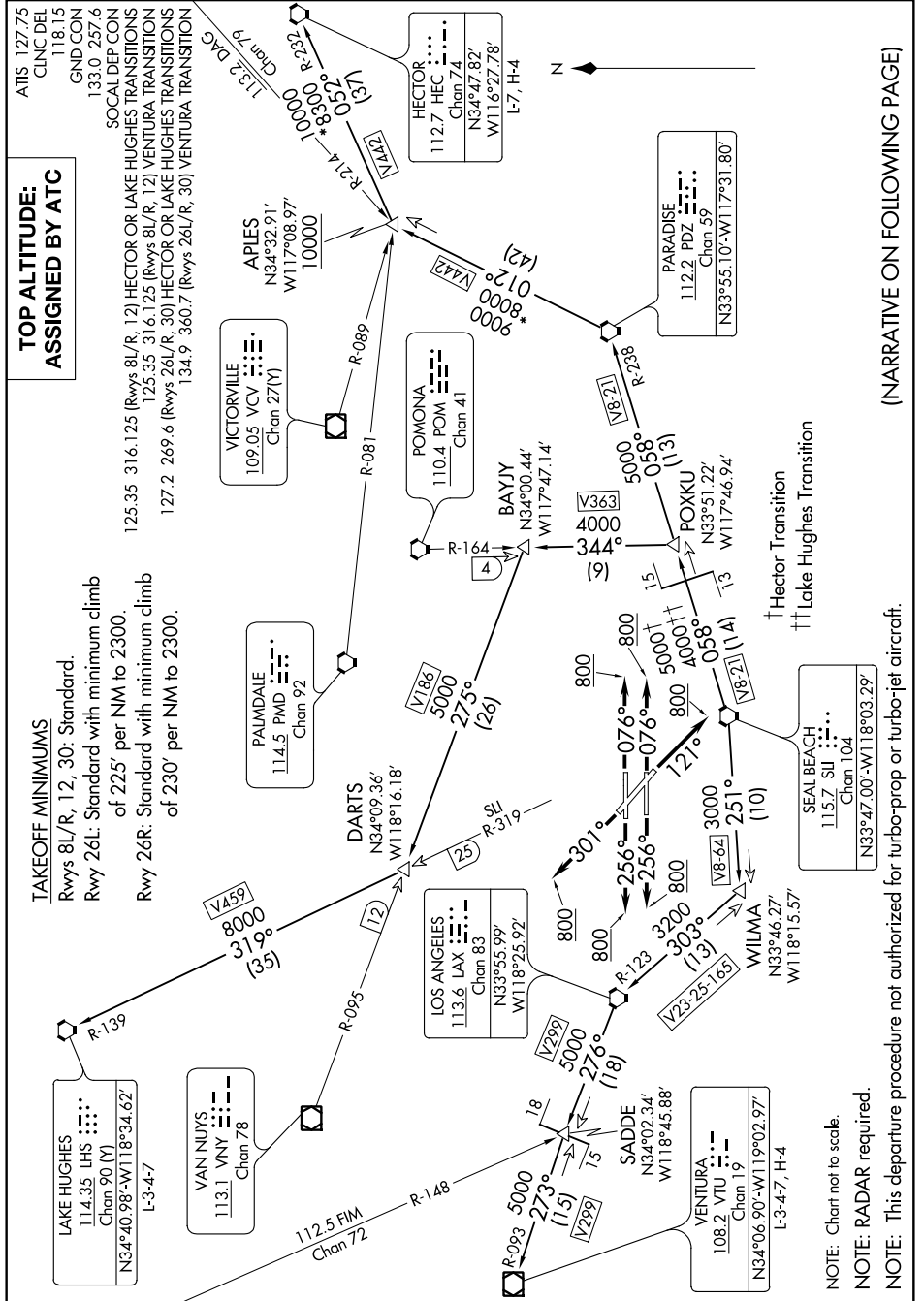
ANAHEIM ONE DEPARTURE

AL-236 (FAA)

LONG BEACH (DAUGHERTY FLD) (LGB)

LONG BEACH, CALIFORNIA

SW-3, 21 APR 2022 to 19 MAY 2022



**TOP ALTITUDE:
ASSIGNED BY ATC**

TAKEOFF MINIMUMS
Rwys 8/L/R, 12, 30: Standard.
Rwy 26L: Standard with minimum climb of 225' per NM to 2300.
Rwy 26R: Standard with minimum climb of 230' per NM to 2300.

ATIS 127.75
CLINCDEL 118.15
GND CON 133.0 257.6
SOCAL DEP CON 125.35 316.125 (Rwys 8/L/R, 12) HECTOR OR LAKE HUGHES TRANSITIONS
125.35 316.125 (Rwys 8/L/R, 12) VENTURA TRANSITION
127.2 269.6 (Rwys 26/L/R, 30) HECTOR OR LAKE HUGHES TRANSITIONS
134.9 360.7 (Rwys 26/L/R, 30) VENTURA TRANSITION

NOTE: Chart not to scale.
NOTE: RADAR required.
NOTE: This departure procedure not authorized for turbo-prop or turbo-jet aircraft.

(NARRATIVE ON FOLLOWING PAGE)

ANAHEIM ONE DEPARTURE

LONG BEACH, CALIFORNIA

LONG BEACH (DAUGHERTY FLD) (LGB)

SW-3, 21 APR 2022 to 19 MAY 2022