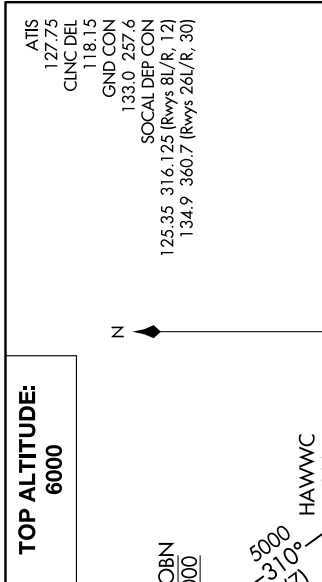


SW-3, 21 APR 2022 to 19 MAY 2022



NOTE: Chart not to scale.

DEPARTURE ROUTE DESCRIPTION

TAKEOFF RUNWAYS 8L/R: Climb heading 076° to 580, then on heading 076° or as assigned by ATC for vectors to PIJUN, cross PIJUN at or above 4000, then on track 290° to cross HAWWC at or above 5000, thence

TAKEOFF RUNWAY 12: Climb heading 121° to 580, then on heading 121° or as assigned by ATC for vectors to PIJUN, cross PIJUN at or above 4000, then on track 290° to cross HAWWC at or above 5000, thence

TAKEOFF RUNWAY 26L: Climb heading 256° to 800, then on heading 270° or as assigned by ATC for vectors to PIJUN, cross PIJUN at or above 4000, then on track 290° to cross HAWWC at or above 5000, thence

TAKEOFF RUNWAY 26R: Climb heading 256° to 580, then on heading 270° or as assigned by ATC for vectors to PIJUN, cross PIJUN at or above 4000, then on track 290° to cross HAWWC at or above 5000, thence

TAKEOFF RUNWAY 30: Climb heading 301° to 580, then on heading 270° or as assigned by ATC for vectors to PIJUN, cross PIJUN at or above 4000, then on track 290° to cross HAWWC at or above 5000, thence

. . . . on (transition). Maintain 6000. Expect higher altitude 10 minutes after departure.

IKAYE TRANSITION (HAWWC3.IKAYE)

TAKEOFF MINIMUMS

Runways 8L/R, 12, 30: Standard.
 Rwy 26L: Standard with minimum climb of 330' per NM to 700.
 Rwy 26R: Standard with minimum climb of 230' per NM to 1600.

NOTE: RADAR required.
 NOTE: RNAV 1.
 NOTE: DME/DME/IRU or GPS required.
 NOTE: This procedure not authorized for turbojet aircraft.

SW-3, 21 APR 2022 to 19 MAY 2022