

APP CRS	Rwy Idg	<b>5660</b>
<b>256°</b>	TDZE	<b>48</b>
	Apt Elev	<b>60</b>

# RNAV (RNP) RWY 26R

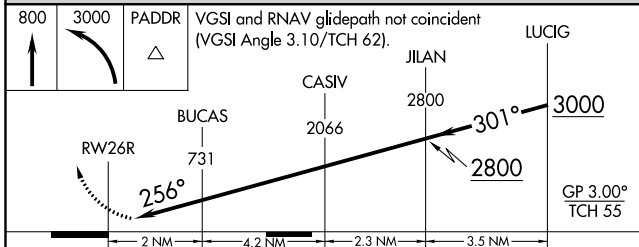
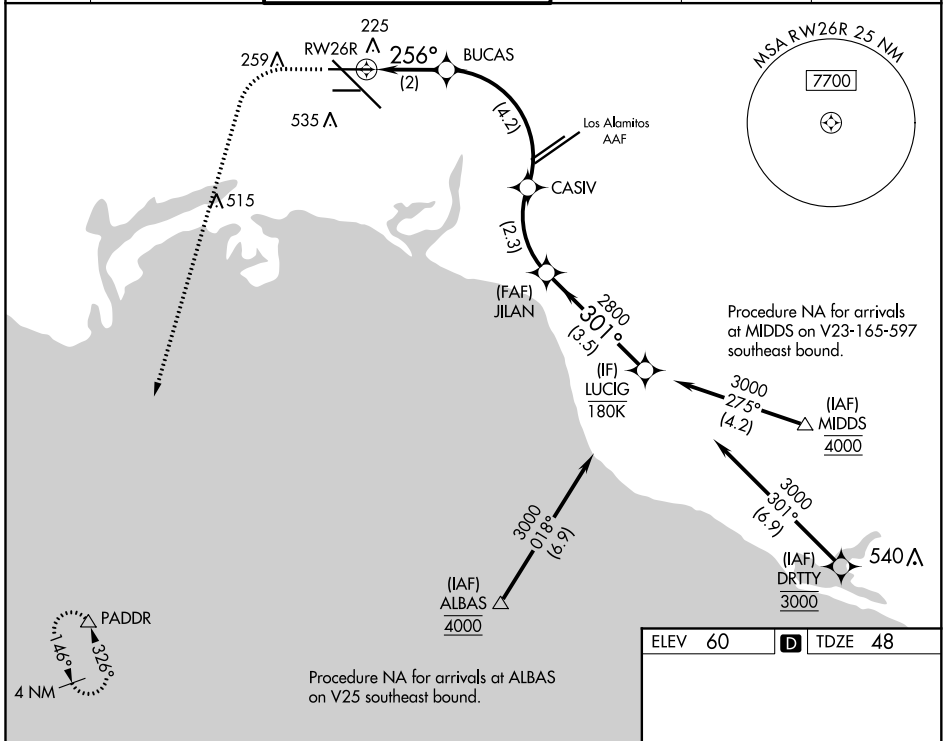
LONG BEACH (DAUGHERTY FLD) (LGB)

RNP AR APCH. RF required.

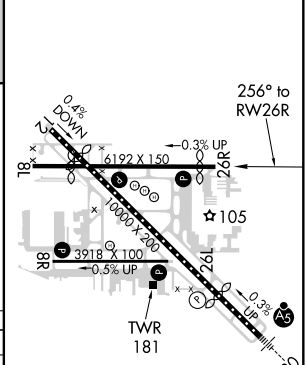
**⚠** For uncompensated Baro-VNAV systems, procedure NA below 4°C (40°F) or above 54°C (130°F).

MISSED APPROACH: Climb to 800 then climbing left turn to 3000 direct PADDR and hold.

ATIS <b>127.75</b>	SOCAL APP CON <b>125.35 316.125</b>	LONG BEACH TOWER* <b>120.5 257.6</b> (Rwy 12) <b>119.4</b> (CTAF) <b>0 257.6</b> (Rwy 30)	GND CON <b>133.0 257.6</b>	CLNC DEL <b>118.15</b>	UNICOM <b>122.95</b>
-----------------------	--	---	-------------------------------	---------------------------	-------------------------



ELEV 60	<b>D</b> TDZE 48
---------	------------------



CATEGORY	A	B	C	D
RNP 0.15 DA		320-1	272 (300-1)	
RNP 0.30 DA		415-1¼	367 (400-1¼)	

TDZ/CL Rwy 30  
 HIRL Rwy 12-30  
 HIRL Rwy 8R-26L **Ⓛ**  
 MIRL Rwy 8L-26R **Ⓛ**  
 REIL Rwy 8R, 12, 26L, and 26R **Ⓛ**

## AUTHORIZATION REQUIRED

SW-3, 21 APR 2022 to 19 MAY 2022

SW-3, 21 APR 2022 to 19 MAY 2022