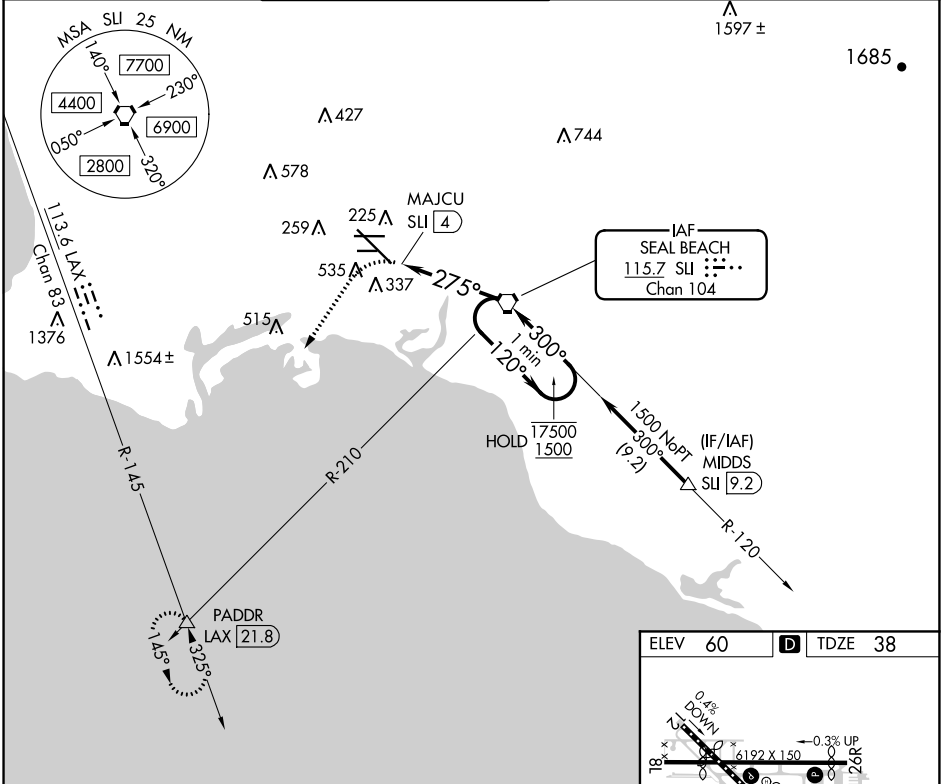


| | | | |
|---|------------------------|---|-------------|
| VORTAC SLI 115.7 Chan 104 | APP CRS 275° | Rwy ldg TDZE 38 Apt Elev 60 | 7414 |
|---|------------------------|---|-------------|

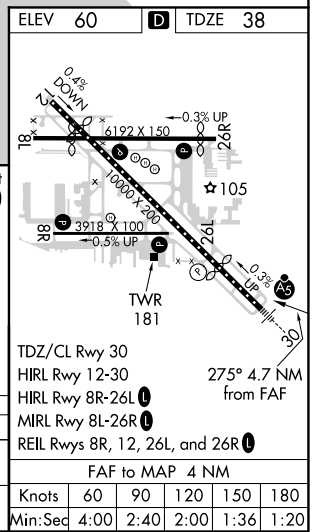
VOR or TACAN RWY 30

LONG BEACH (DAUGHERTY FLD) (L.G.B)

| | | | | | |
|--|--------|--|--|---|-------------------------------|
| Rwy 30 helicopter visibility reduction below RVR 4000 NA. Inop table does not apply. | MISLSR | MISSED APPROACH: Climbing left turn to 3000 on heading 200° and LAX VORTAC R-145 to PADDR INT/LAX 21.8 DME and hold. | | | |
| | | ATIS 127.75 | SOCAL APP CON 125.35 316.125 | LONG BEACH TOWER* 120.5 257.6 (Rwy 12) 119.4 (CTAF) 257.6 (Rwy 30) | GND CON 133.0 257.6 |



| | | | | |
|--|--|---|--|--|
| 3000 hdg 200° LAX R-145 PADDR △ | VGSIs and descent angles not coincident (VGSi Angle 3.00/TCH 73) VORTAC One Minute Holding Pattern | | | |
| | | | | |
| CATEGORY | A | B | C | D |
| S-30 | 600/55 562 (600-1) | | 600-1 $\frac{5}{8}$ 562 (600-1 $\frac{5}{8}$) | |
| CIRCLING | 840-1 780 (800-1) | | 840-2 $\frac{1}{4}$ 780 (800-2 $\frac{1}{4}$) | 840-2 $\frac{1}{2}$ 780 (800-2 $\frac{1}{2}$) |



SW-3, 21 APR 2022 to 19 MAY 2022

SW-3, 21 APR 2022 to 19 MAY 2022