

LOC/DME I-ROW	APP CRS	Rwy Idg	13001
109.9	215°	TDZE	3633
Chan 36		Apt Elev	3671

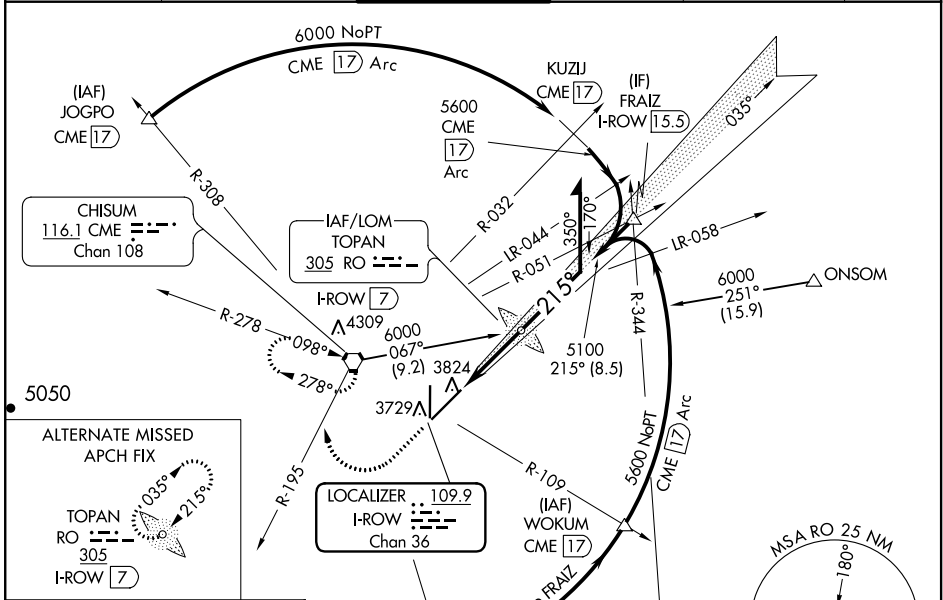
ILS or LOC RWY 21

ROSWELL AIR CENTER (ROW)

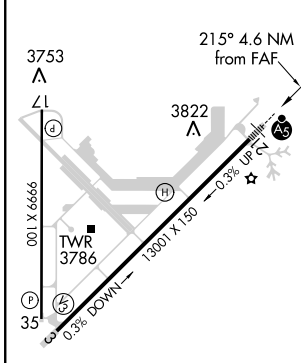
NA When local altimeter setting not received, use Artesia altimeter setting and increase all DA 84 feet and all MDA 100 feet; increase LOC Cats C and D visibility 3/8 mile. For inoperative MALSR when using Artesia altimeter setting, increase ILS all Cats visibility to 1 and LOC Cats C and D to 1 3/8. VDP NA when using Artesia altimeter setting.

MALSR MISSED APPROACH: Climb to 5000 then climbing right turn to 6000 on CME VORTAC R-195 to CME VORTAC and hold.

ATIS 128.45 306.2	ROSWELL APP CON* 119.6 239.0	ROSWELL TOWER* 118.5 (CTAF) 233.7	GND CON 121.9 348.6	CLNC DEL 132.875 282.25	UNICOM 122.95
-----------------------------	--	---	-------------------------------	-----------------------------------	-------------------------



ELEV 3671	D	TDZE 3633
-----------	---	-----------



ADF or DME REQUIRED

5000	6000	CME	TOPAN LOM I-ROW [7]	Remain within 10 NM
↑	CME R-195	◑		
Use I-ROW DME when on LOC course. *LOC only.				
I-ROW [2.4]	*I-ROW [3.5]			
1.1 NM	3.5 NM			GS 2.70° TCH 61

CATEGORY	A	B	C	D
S-ILS 21	3833-1/2 200 (200-1/2)			
S-LOC 21	4020-1/2 387 (400-1/2)	4020-5/8 387 (400-5/8)		
CIRCLING	4140-1 469 (500-1)	4140-1 1/2 469 (500-1 1/2)		4240-2 569 (600-2)

SW-1, 21 APR 2022 to 19 MAY 2022

SW-1, 21 APR 2022 to 19 MAY 2022