

RNAV (GPS) RWY 21

ROSWELL AIR CENTER (ROW)

| | | | |
|--|------------------------|-----------------------------|--|
| WAAS CH 69302 W21A | APP CRS 215° | Rwy Idg TDZE Apt Elev | 13001 3633 3671 |
|--|------------------------|-----------------------------|--|

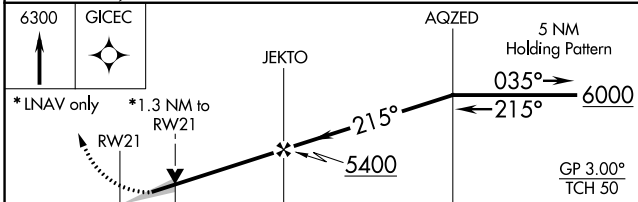
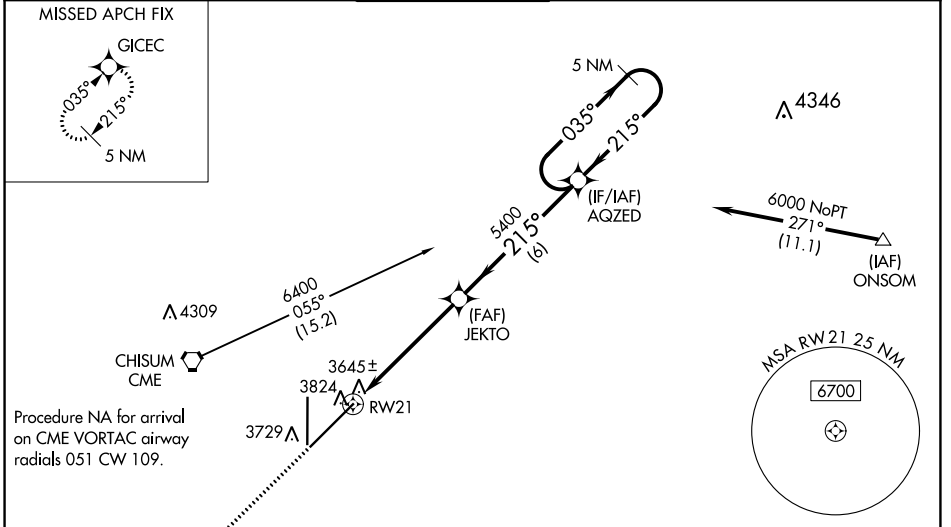
RNP APCH-GPS.

ASR For uncompensated Baro-VNAV systems, LNAV/VNAV NA below -22°C or above 41°C. When local altimeter setting not received, use Artesia altimeter setting: increase LPV DA to 3999 and all visibilities 1/8 SM; increase LNAV/VNAV DA to 4095 feet and all visibilities 3/8 SM; increase all MDAs 100 feet and LNAV Cats C/D visibility 1/4 SM, and Circling Cat C visibility 1/8 SM. VDP and Baro-VNAV NA when using Artesia altimeter setting. For inop ALS, increase LPV all Cats visibility to 3/8 SM, and LNAV/VNAV all Cats visibility to 1 SM. For inop ALS when using Artesia altimeter setting, increase LPV all Cats visibility to 1 SM and LNAV/VNAV all Cats visibility to 1 3/8 SM.

MALSRL

MISSED APPROACH:
Climb to 6300 direct GICEC and hold.

| | | | | | |
|-----------------------------|---|---|-------------------------------|-----------------------------------|-------------------------|
| ATIS 128.45 306.2 | ROSWELL APP CON * 119.6 239.0 | ROSWELL TOWER * 118.5(CTAF) 233.7 | GND CON 121.9 348.6 | CLNC DEL 132.875 282.25 | UNICOM 122.95 |
|-----------------------------|---|---|-------------------------------|-----------------------------------|-------------------------|



| CATEGORY | A | B | C | D |
|--------------|------------|-----------------|-----------------|---------------|
| LPV DA | 3899-1/2 | | 266 (300-1/2) | |
| LNAV/VNAV DA | 3995-5/8 | | 362 (400-3/8) | |
| LNAV MDA | 4080-1/2 | 447 (500-1/2) | 4080-7/8 | 447 (500-7/8) |
| CIRCLING | 4140-1 1/4 | 469 (500-1 1/4) | 4140-1 1/2 | 4240-2 |
| | | | 469 (500-1 1/2) | 569 (600-2) |

ELEV 3671

TDZE 3633

3753

215° to RW21

3822

3822

3786

35

001 X 6666

TWR 3786

1800 X 150

0.3% UP CN

0.3% DOWN

MIRL Rwy 3-21

MIRL Rwy 17-35

SW-1, 21 APR 2022 to 19 MAY 2022

SW-1, 21 APR 2022 to 19 MAY 2022