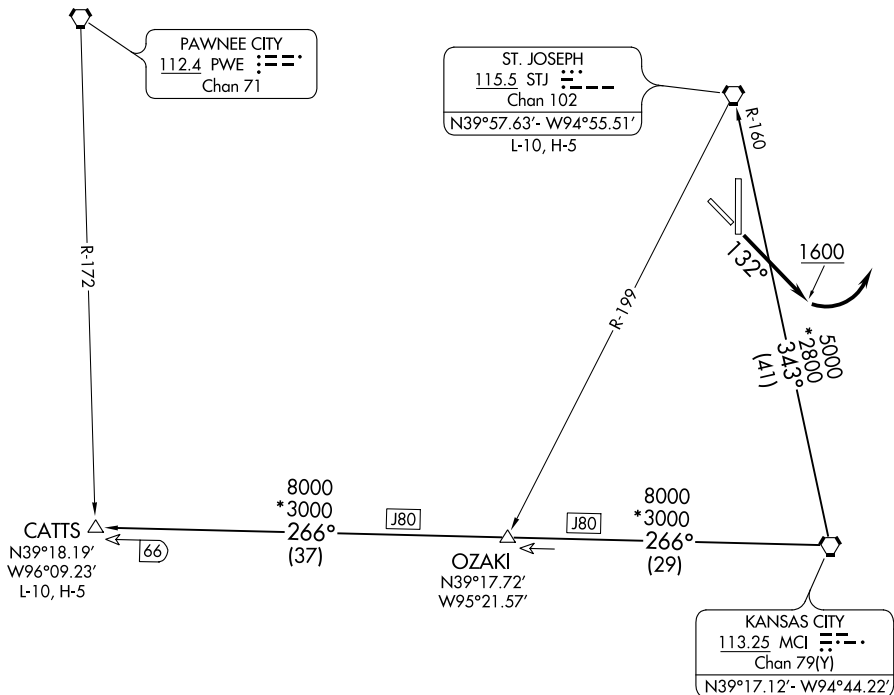


ATIS
 125.05
 ST. JOSEPH DEP CON★
 120.35 360.8



NOTE: RADAR required.

TAKEOFF MINIMUMS

Rwys 13, 17, 35: Standard.
 Rwy 31: 400-2¼ or standard with minimum climb of 340' per NM to 1300.

NOTE: Chart not to scale

DEPARTURE ROUTE DESCRIPTION

TAKEOFF RUNWAY 13: Climb heading 132° to 1600 before turning left, thence. . . . climb on assigned heading for RADAR vectors to appropriate route. Expect filed altitude 10 minutes after departure.

TAKEOFF ALL OTHER RUNWAYS: Climb on assigned heading for RADAR vectors to appropriate route. Expect filed altitude 10 minutes after departure.

CATTS TRANSITION (CHIEF7.CATTS): From over MCI VORTAC on MCI R-266 to CATTS INT.

ST. JOSEPH TRANSITION (CHIEF7.STJ): From over MCI VORTAC on MCI R-343 and STJ R-160 to STJ VORTAC.

NC-3, 21 APR 2022 to 19 MAY 2022

NC-3, 21 APR 2022 to 19 MAY 2022