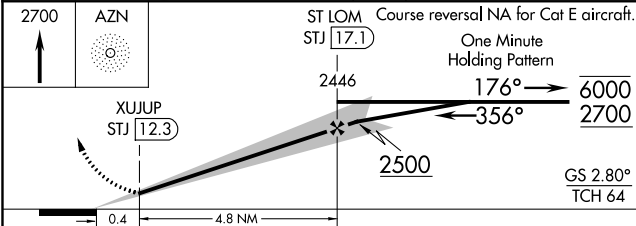
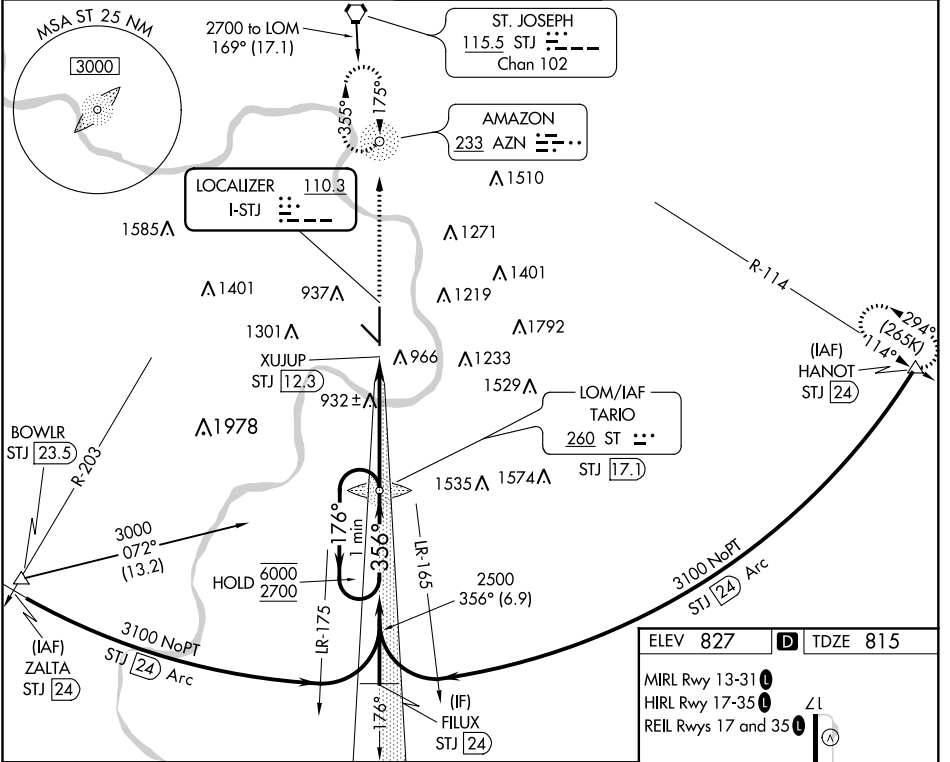


LOC I-STJ 110.3	APP CRS 356°	Rwy Idg TDZE Apt Elev	8061 815 827
---------------------------	------------------------	-----------------------------	---

ILS or LOC RWY 35

ROSECRANS MEML (STJ)

ADF or TACAN required.		MISSED APPROACH: Climb to 2700 direct AZN NDB and hold. (TACAN aircraft climb to 2700 then climbing right turn to 3100 on STJ VORTAC R-114 to HANOT/24 DME and hold NW, LT, 114° inbound).				
DME from STJ VORTAC, simultaneous reception of I-STJ and STJ DME required. ASR/PAR		ATIS 125.05	ST. JOSEPH APP CON ★ 120.35 360.8	ST. JOSEPH TOWER ★ 126.9 (CTAF) 239.0	GND CON 121.9	UNICOM 122.95



ELEV 827	TDZE 815
MIRL Rwy 13-31	HIRL Rwy 17-35
REIL Rwys 17 and 35	

ZL

160

808

TWR
892

880

35

356° 5.2 NM
from FAF

FAF to MAP 4.8 NM

CIRCLING	1400-1 573 (600-1)	1420-1 593 (600-1)	1620-2¼ 793 (800-2¼)	1640-2¾ 813 (900-2¾)	1760-3 933 (1000-3)
	Knots 60	90	120	150	180
	Min:Sec 4:48	3:12	2:24	1:55	1:36

NC-3, 21 APR 2022 to 19 MAY 2022

NC-3, 21 APR 2022 to 19 MAY 2022